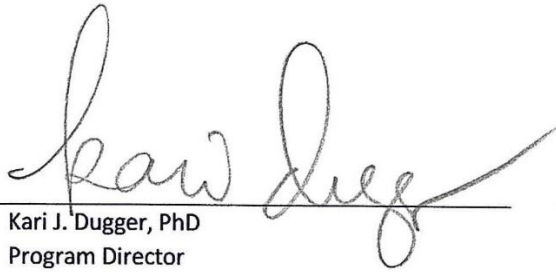


Clinical and Diagnostic Sciences Biomedical Sciences Program 2018-2019



STUDENT HANDBOOK

UAB SCHOOL OF HEALTH PROFESSIONS
DEPARTMENT OF CLINICAL AND DIAGNOSTIC SCIENCES
BIOMEDICAL SCIENCES PROGRAM
2018-2019 ACADEMIC HANDBOOK



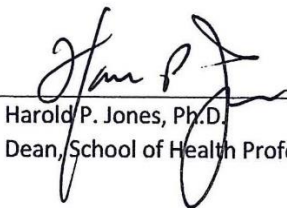
Kari J. Dugger, PhD
Program Director

Date 07/31/18



Peter G. Anderson, DVM, PhD
Department Chair

Date 8/2/18



Harold P. Jones, Ph.D.
Dean, School of Health Professions

Date 8/9/18

TABLE OF CONTENTS

INTRODUCTION5

 DEAN’S WELCOME MESSAGE 5

 OVERVIEW OF THE SCHOOL OF HEALTH PROFESSIONS..... 6

 Office for Student Recruitment, Engagement and Success (OSRES) 7

 School of Health Professions Organizational Chart - 2018-2019..... 8

SECTION 1 – SCHOOL AND UNIVERSITY INFORMATION9

 Academic Calendar 9

 Academic Honor Code (UAB) 9

 AskIT 9

 Attendance..... 10

 Awards and Honor Societies 10

 Background Check..... 11

 BlazerID / BlazerNET / Email 11

 Blazer Express 11

 Bookstore 12

 Campus OneCard 12

 Campus Map 12

 Canvas Learning Management System 12

 Counseling Services..... 12

 Student Advocacy, Rights and Conduct (SARC) 12

 Disability Support Services (DSS) 13

 Drug Screening..... 13

 Emergencies 13

 Diversity, Equity and Inclusion (DEI) 13

 FERPA 14

 Financial Aid 14

 Food Services 14

 Graduate School..... 14

 Graduation 14

Student Health and Wellness.....	14
HIPAA Training	15
Institutional Review Board for Human Use (IRB).....	15
Intellectual Property	15
Lactation Centers	15
Libraries and Learning Resource Center	15
OneStop Student Services.....	16
Parking	16
Patient Care Partnership.....	16
Plagiarism and Turnitin	17
Recreation Center	17
Scholarships: Blazer Scholarship Management and Resource Tool (B-SMART)	17
Social Media	18
Tuition and Fees.....	18
Weather	19
Withdrawal from Course / Program	19
SECTION 2 – SHP AND UAB POLICIES.....	20
SCHOOL OF HEALTH PROFESSIONS POLICIES.....	20
Background Check and Drug Screen	20
Grievance Procedures for Violations of Academic Standards	20
Impairment and Substance Abuse	20
Plagiarism.....	20
UAB POLICIES.....	20
CLASSROOM BEHAVIORS	20
Health.....	20
Substance Use/Abuse	20
Technology guidelines.....	21
Inclusiveness	21
Research and scholarly activities	21
SECTION 3 – DEPARTMENTAL POLICIES.....	22

DEPARTMENT OF CLINICAL AND DIAGNOSTIC SCIENCES (CDS)	22
CDS POLICIES	23
Academic Progress	23
Attendance and Excused Absences.....	23
Attendance Infractions	24
Consensual Romantic Relationships	24
Data Protection and Security	24
Dress Code	25
Food and Drink in the Classroom.....	26
Grading Policy	26
Incomplete & Deferred Credit Policy	26
Infection Control	26
Liability Insurance	26
Non-Academic Student Conduct.....	27
Non-Resident Tuition Policy.....	27
Pregnancy Policy	27
SECTION 4 – PROGRAM INFORMATION	28
WELCOME.....	28
FACULTY & STAFF	29
PROGRAM INTRODUCTION	33
BMD PROGRAM MISSION STATEMENT	33
BMD PROGRAM GOALS	33
ADMISSION TO THE BACHELOR OF SCIENCE IN BIOMEDICAL SCIENCES PROGRAM	33
CURRICULUM.....	35
BMD PROGRAM ACADEMIC AND OPERATIONAL POLICIES.....	41
MANDATORY COMPUTER OWNERSHIP POLICY FOR INCOMING BMD STUDENTS.....	44
GRADES	45
TECHNOLOGY USE IN THE CLASSROOM.....	46
GUIDELINES FOR AMERICANS WITH DISABILITY ACT COMPLIANCE.....	47

INTRODUCTION

DEAN'S WELCOME MESSAGE

Welcome to the University of Alabama at Birmingham School of Health Professions (SHP), one of the nation's leaders in the health care industry.

We are home to one of the largest health professions schools in the nation with more than 25 programs at the baccalaureate, master's, and doctoral levels with over 2,000 undergraduate and graduate students enrolled. The School of Health Professions is part of UAB's thriving academic health center. As one of our students, you will have the opportunity to work side-by-side with world-renowned researchers and faculty, utilize advanced technologies and experience cutting-edge approaches to clinical treatment.

We understand that healthcare needs are constantly changing. That is why we continue to add innovative programs such as Biotechnology, Genetic Counseling, our one-of-a-kind Low Vision Rehabilitation graduate certificate, Healthcare Quality and Safety, Ph.D. in Rehabilitation Science, and a Master's in Biomedical and Health Sciences, which can be completed within eleven months. Our newest programs are Healthcare Simulation and Clinical Pathologist Assistant, and we have many other well-established curriculums.

Our degrees and programs are fully accredited by their respective professional organizations. This means you will be eligible for licensure, national certification or registration, and enjoy being in high demand within the job market. Our first-time student exam pass rate on credentialing exams is an astounding 98 percent.

All of our programs with rankings reside among the nation's top 25 of the *U.S. News and World Report*. We continue to be rated at the top of the list in research funding from the National Institutes of Health, and SHP is the only school in the country to house both an NIH-funded Nutrition and Obesity Research Center and an NIH Diabetes Research and Training Center.

Graduating from SHP means you will have acquired an esteemed degree, enjoy choosing among a host of job options in healthcare, an industry that continues to grow rapidly, and be well-prepared to make a difference in your field.

Our alumni give advice to current students that is worth repeating: 'be a sponge, learn your craft, be a better professional for your patients, be open minded to future possibilities, and remember to have a healthy work/ life balance'. I look forward to seeing you grow in your respective field and watching you become the professional we know you can be.

Harold P. Jones, PhD
Dean, UAB School of Health Professions

OVERVIEW OF THE SCHOOL OF HEALTH PROFESSIONS

A leader in federally funded research, the UAB School of Health Professions (SHP), is the largest academic institution of its type in the United States and currently boasts nationally ranked programs. What began in the 1950's as a collection of courses in various para-professional disciplines has grown into an internationally recognized center of academic excellence.

The SHP initially took shape in 1969 as UAB gained autonomy within the University of Alabama System. Originally christened the School of Community and Allied Health Resources (SCAHR), the school incorporated the School of Health Services Administration and the Division of Allied Health Sciences from the College of General Studies with parts of the Department of Public Health and Epidemiology from the medical school. An innovative facility designed to meet the growing needs of the health care industry, the SCAHR was divided into four academic divisions that functioned like regular academic departments: Health Services Administration, Public Health and Environment, Allied Health Sciences, and the Regional Technical Institute for Health Occupations.

Throughout the 1970's and 80's the school's offerings were amended to reflect the changing health care industry. As a result of the changes, SCAHR became the School of Public and Allied Health (SPAH). Next it became the School of Community and Allied Health (SCAH) and later the School of Health Related Professions (SHRP). During this time, the school added several new areas of study including the consistently nationally ranked program in Nutrition Sciences.

Dr. Harold Jones became the school's dean in 2001. Through his visionary leadership and guidance, the school is experiencing unparalleled success. Up until that time, the SHRP's programs were housed in various locations throughout the UAB campus. However, in the spring of 2002, many of the classrooms, laboratories and faculty offices moved to the newly completed School of Health Professions Building (SHPB). This was the first building dedicated to housing health related programs since their original grouping more than 30 years prior.

Today, the school is the School of Health Professions, and is comprised of more than 25 programs – at the baccalaureate, master's and doctoral levels – across five academic departments: Clinical and Diagnostic Sciences, Health Services Administration, Nutrition Sciences, Occupational Therapy, and Physical Therapy. The school is housed in three buildings, the Susan Mott Webb Nutrition Sciences Building, the Learning Resource Center Building, and the School of Health Professions Building (SHPB). With more than 2,200 faculty, staff, and students, SHP is one of six schools comprising the world-renowned UAB Academic Health Center. Students have access to vast academic resources, state-of-the-art facilities, and progressive research.

SHP is proud of many accomplishments including:

- U.S. News & World Report ranks SHP programs in the nation's top 25
- Research funding is over \$14 million and growing
- The school is at the top of the list in research funding from the National Institutes of Health for schools of its type and has been either first or second in funding received since 1969

OFFICE FOR STUDENT RECRUITMENT, ENGAGEMENT AND SUCCESS (OSRES)

The SHP Office for Student Recruitment, Engagement and Success (OSRES) supports UAB's mission and values with a focus on achievement, collaboration and diversity. It furthers the School of Health Professions' mission to be a leader shaping the future of healthcare by recruiting the best and brightest to SHP; developing students to impact the campus and communities; and graduating tomorrow's healthcare leaders. Guided by these commitments, the OSRES provides support to all students through a number of programs including the following:

- Academic Coaching
- Tutoring and Supplemental Instruction
- Campus Resource Referral
- Management of school-wide Scholarships in SHP

The OSRES also coordinates the School of Health Professions Student Affairs Committee (SAC.) SAC is responsible for student activities, services, programs, organizations, policies and procedures consistent with the university's non-academic conduct policies. Subcommittees of SAC include the following:

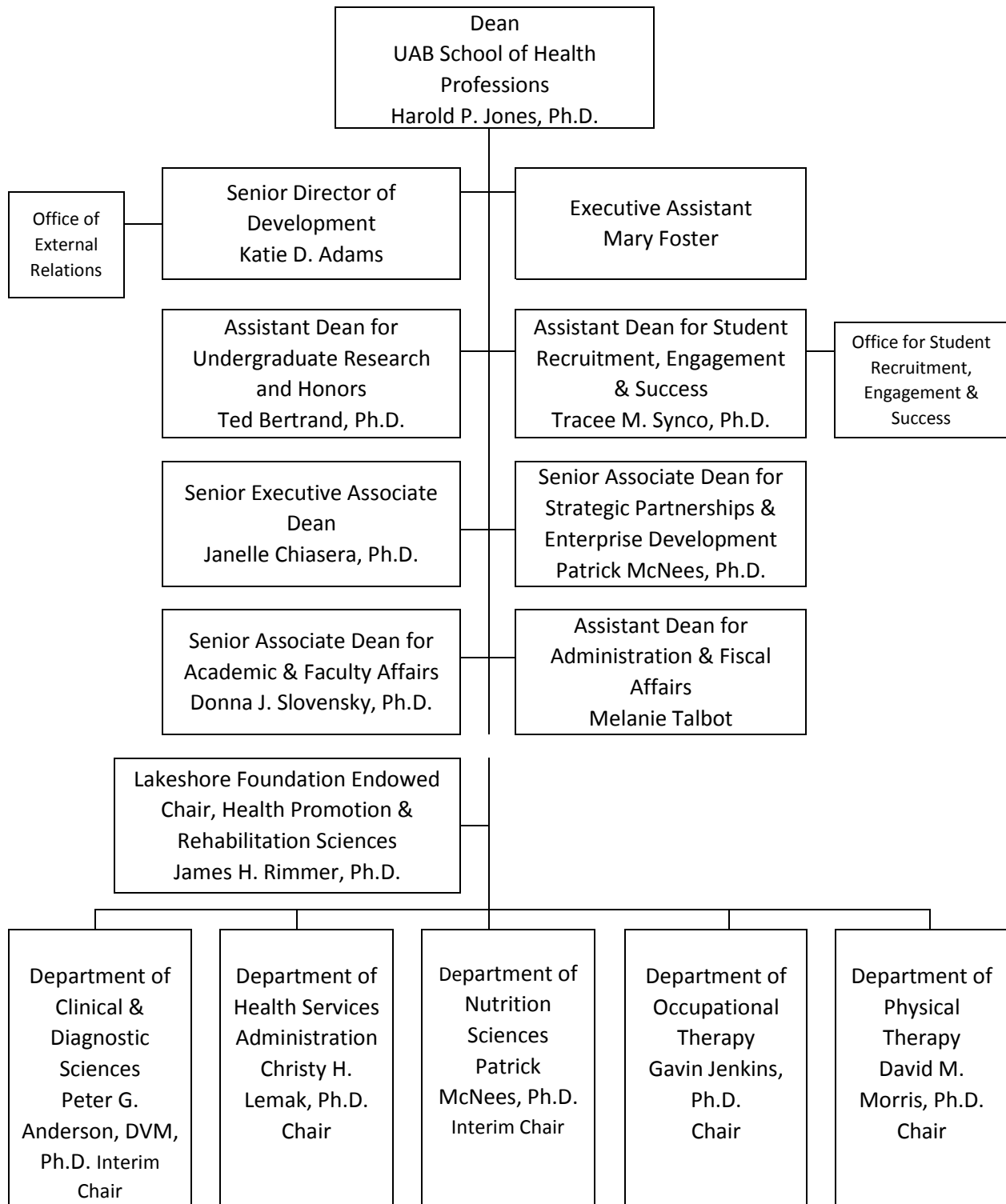
- Homecoming
- Orientation
- Student Activities
- Non Academic Misconduct/ Breaches in Professional Behaviors

Additionally, the OSRES team recognizes that with classes and labs, internships, and studying, students have particularly demanding schedules. In response, we bring resources to you and serve as liaison between SHP and university departments across student services.

The team at OSRES is here to support students. We have an open-door policy and encourage students to connect. Students should feel free to drop-by, no appointment needed; call, email or schedule a meeting. We are here to help students in the School of Health Professions make the most of their UAB experience.

OSRES - Location: SHPB 230 Telephone: 205-934-4195 or 205-934-4194 Email: shp@uab.edu

SCHOOL OF HEALTH PROFESSIONS ORGANIZATIONAL CHART - 2018-2019



SECTION 1 – SCHOOL AND UNIVERSITY INFORMATION

ACADEMIC CALENDAR

All dates related to registration, payments of tuition and fees drop/add dates, other administrative requirements, and official school holidays are recorded on the UAB Academic Calendar available at www.uab.edu/academiccalendar.

ACADEMIC HONOR CODE (UAB)

The University of Alabama at Birmingham expects all members of its academic community to function according to the highest ethical and professional standards. Students, faculty, and the administration of the institution must be involved to ensure this quality of academic conduct. Academic misconduct undermines the purpose of education. Such behavior is a serious violation of the trust that must exist among faculty and students for a university to nurture intellectual growth and development. Academic misconduct can generally be defined as all acts of dishonesty in an academic or related matter.

Academic dishonesty includes, but is not limited to, the following categories of behavior:

ABETTING is helping another student commit an act of academic dishonesty. Allowing someone to copy your quiz answers or use your work as their own are examples of abetting.

CHEATING is the unauthorized use or attempted use of unauthorized materials, information, study aids, the work of others, or computer-related information.

PLAGIARISM means claiming as your own the ideas, words, data, computer programs, creative compositions, artwork, etc., done by someone else. Examples include improper citation of referenced works, the use of commercially available scholarly papers, failure to cite sources, or copying another person's ideas.

FABRICATION means presenting falsified data, citations, or quotations as genuine.

MISREPRESENTATION is falsification, alteration, or the misstatement of the contents of documents, academic work, or other materials related to academic matters, including work substantially done for one class as work done for another without receiving prior approval from the instructor.

Violations of the UAB Academic Honor Code are punishable by a range of penalties, from receiving a failing grade on an assignment, to an F in the course, to dismissal. Any course grade of F for academic misconduct supersedes any other grade or notation for that class. Withdrawal from a course while a possible violation of the Academic Honor Code is under review will not preclude the assignment of a course grade that appropriately reflects the student's performance prior to withdrawal if the violation is substantiated.

For more information go to: www.uab.edu/students/one-stop/policies/academic-honor-code

ASKIT

AskIT is the technology help desk for faculty, staff, and students. They provide free support via telephone, email, or in-person. You will be asked to supply your BlazerID when you request assistance. Phone: (205) 996-5555 Email: askit@uab.edu Website: https://uabprod.service-now.com/ess_portal/home.do

ATTENDANCE

Class attendance is expected in all SHP programs. Specific class, laboratory or clinical site attendance requirements may be more stringent than university guidelines. Refer to the program requirements in this handbook and in course syllabi for policies. The UAB policy for undergraduates follows.

The University of Alabama at Birmingham recognizes that the academic success of individual students is related to their class attendance and participation. Each course instructor is responsible for establishing policies concerning class attendance and make-up opportunities. Any such policies, including points for attendance and/or participation, penalties for absences, limits on excused absences, total allowable absences, etc., must be specified in the course syllabus provided to students at the beginning of the course term. Such policies are subject to departmental oversight and may not, by their specific prescriptions, negate or circumvent the accommodations provided below for excused absences.

The University regards certain absences as excused and in those instances requires that instructors provide an accommodation for the student who misses assignments, presentations, examinations, or other academic work of a substantive nature by virtue of these excused absences. Examples include the following:

Absences due to jury or military duty provided that official documentation has been provided to the instructor in a timely manner in advance.

Absences of students registered with Disabilities Services for disabilities eligible for "a reasonable number of disability-related absences" provided students give their instructors notice of a disability-related absence in advance or as soon as possible.

Absences due to participation in university-sponsored activities when the student is representing the university in an official capacity and as a critical participant, provided that the procedures below have been followed:

Before the end of the add/drop period, students must provide their instructor a schedule of anticipated excused absences in or with a letter explaining the nature of the expected absences from the director of the unit or department sponsoring the activity.

If a change in the schedule occurs, students are responsible for providing their instructors with advance written notification from the sponsoring unit or department.

Absences due to other extenuating circumstances that instructors deem excused. Such classification is at the discretion of the instructor and is predicated upon consistent treatment of all students. In these instances, instructors must devise a system for reasonable accommodation including, for example, policies allowing for dropped exams/quizzes, make-up exams, rescheduling of student classroom presentations or early or later submission of written assignments.

AWARDS AND HONOR SOCIETIES

All students in the School of Health Professions are eligible for consideration for following awards or society memberships.

- Alfred W. Sangster Award for Outstanding International Student – This award is presented annually to an international student in recognition of his or her academic and non-academic achievements.
- Alpha Eta Society – The UAB Chapter of this Society recognizes students registered in the final term of a baccalaureate or graduate health professions program. Inductees must have a cumulative grade point average of 3.0 (4.0 = A), and be in the upper 10% of their program. Nominations are made by program directors in spring and summer terms.

- Cecile Clardy Satterfield Award for Humanism in Health Care – This award is made annually to recognize one outstanding student for humanitarianism, professionalism, and commitment to health care. Nominations are coordinated by program directors, but may also be made by faculty, students, patients, or preceptors.
- Charles Brooks Award for Creativity – This award is made annually in recognition of creative accomplishments such as written publications or artistic contributions which complemented the student’s academic activities. Nominations are made by program directors.
- Dean’s Leadership and Service Award – Presented to a maximum of three outstanding SHP students annually, this award recognizes leadership to the School, UAB, and the community. Nominations are made by program directors or faculty.
- Phi Kappa Phi – This is the oldest, and most selective, all-discipline honor society in the nation. Membership is by invitation to the top 7.5% of junior students and the top 10% of seniors and graduate students. Nominations are made by program directors.

Please refer to the program section of this handbook for awards and honors available to students in individual programs.

BACKGROUND CHECK

SHP students are required by policy, to undergo a background check using the school’s approved vendor, CastleBranch www.castlebranch.com, at the time of program admission, and again, prior to placement in a clinical rotation. Instructions for requesting the background check and appropriate consent forms are provided to students by their programs. Please refer to the policy section of this handbook for the policy statement.

BLAZERID / BLAZERNET / EMAIL

BLAZERID: All students receive a unique identifier, the BlazerID, established at: www.uab.edu/blazerid. Your BlazerID is required for accessing BlazerNET and other campus resources. To activate one’s BlazerID, select “Activate Accounts.”

BlazerNET is the official portal of the UAB information network and is accessible from any Internet-accessible computer, on- or off-campus. Access BlazerNET from UAB home page www.uab.edu then choose UAB Quicklinks.

Email: uab.edu Monitor your email regularly. Your UAB email is the official communication medium for courses, news, information and announcements. UAB student email is provided through Microsoft Office 365, a cloud based system. Students have 50 GB of email space and 25 GB of free file 1 TB storage.

BLAZER EXPRESS

The UAB Blazer Express Transit System provides transportation throughout the UAB campus. With a valid UAB ID badge, students can enjoy fare-free bus transportation. All buses are ADA-accessible and can seat approximately 35 riders. For an updated schedule, route maps, and hours of operation please go to www.uab.edu/blazerexpress/.

BOOKSTORE

There is one bookstore located on the UAB campus, offering a wide variety of products and services to students, including online purchasing and shipping. The bookstore stocks UAB memorabilia and college wear in addition to all required textbooks and course material.

UAB BARNES AND NOBLE BOOKSTORE

Location: 1400 University Blvd, 35233

Hours: M – F 9:00 a.m. – 5:00 pm.; Sat 7:00 a.m. – 6:30 p.m.; Sun --Closed

Telephone: (205) 996-2665 Website: <http://uab.bncollege.com>

CAMPUS ONECARD

The UAB OneCard is the official university identification card. It is used for personal identification, for entry to campus events and the recreation center, for library checkout, and other UAB services. It also serves as a declining balance card for the UAB meal plans and for Blazer Bucks accounts. Additional information is available at www.uab.edu/onecard.

CAMPUS MAP

UAB's campus map can be found at the following: www.uab.edu/map/

CANVAS LEARNING MANAGEMENT SYSTEM

The Canvas Learning Management System is the platform used for managing instructional materials online. Canvas course sites are accessed through BlazerNET or at www.uab.edu/elearning/canvas. Students should monitor their course sites routinely for communication from faculty and manage course assignments.

COUNSELING SERVICES

The Counseling and Wellness Center offers no cost, confidential counseling for UAB students related to physical, emotional, social, intellectual, or spiritual concerns. The Center is located in Student Health and Wellness Center at 1714 9th Ave. South. For more information, call 205-934-5816 or www.uab.edu/studenthealth/counseling

STUDENT ADVOCACY, RIGHTS AND CONDUCT (SARC)

Student Advocacy, Rights and Conduct (SARC) is responsible for upholding the integrity and purpose of the university through the fair and consistent application of policies and procedures to students' behavior to ensure a community that respects the dignity and right of all persons to reach their highest potential. SARC delivers programs and services in order to promote student safety and success, the pursuit of knowledge, respect for self and others, global citizenship, personal accountability and integrity, and ethical development. The UAB student conduct code may be accessed online: <http://www.uab.edu/students/sarc/services/student-conduct-code>

DISABILITY SUPPORT SERVICES (DSS)

“DSS provides an accessible university experience through collaboration with UAB partners. These partnerships create a campus where individuals with disabilities have equal access to programs, activities, and opportunities by identifying and removing barriers, providing individualized services, and facilitating accommodations.”

“DSS serves as the university-appointed office charged with providing institution-wide advisement, consultation, and training on disability-related topics which include legal and regulatory compliance, universal design, and disability scholarship.”

To apply for accommodations contact DSS. **Note:** *You must have your Blazer ID and password.*

Telephone: (205) 934-4205 or (205) 934-4248 (TDD) Fax: (205) 934-8170

Email: dss@uab.edu Website: www.uab.edu/students/disability/

DRUG SCREENING

By policy, SHP students are required to undergo a routine drug screen using the school’s approved vendor, CastleBranch www.castlebranch.com, at the time of program admission and again prior to placement in a clinical rotation. Instructions for requesting the drug screen and appropriate consent forms will be provided to students by their programs. Please refer to the policy section of this handbook for the school and university policy statements. The Office for Student Recruitment, Engagement and Success (OSRES) manages the procedures and compliance for the school. If you have questions, contact them at (205) 934-4194 or shp@uab.edu or visit room 230 in the School of Health Professions Building. For more information visit: <http://www.uab.edu/shp/home/about-shp/student-services>

EMERGENCIES

Report suspicious or threatening activity to the UAB Police Department immediately. Law officers are available 24 hours, seven days a week. Also, more than 300 emergency blue light telephones connected directly to the police dispatch are located throughout campus.

UAB Police: Dial 911 *from a campus phone* or call: 934-3535; 934-HELP (4357); or 934-4434

Emergencies affecting campus are communicated via the following:

Weather & Emergency Hotline: (205) 934-2165 • University home web page: www.uab.edu

- Webpage: www.uab.edu/emergency
- Announcements on BlazerNET
- Twitter@UABALERT: www.twitter.com/uabalert
- facebook.com/UABALERT
- Cell phone messages and SMS text – register for B-ALERT notices via www.uab.edu/balert

DIVERSITY, EQUITY AND INCLUSION (DEI)

The mission of DEI is to “... champion equity and inclusion and, in particular, to advocate for inclusive excellence and equity so that UAB students, faculty, staff, community partners and friends can flourish and excel.” Inspired by “... what we value, what we learn from research and what we teach and share with the world.” DEI’s goal is “... to inspire our people to take a courageous step to inspire equity and inclusive excellence throughout our state, nation and world, every day.” Dr. Paulette Patterson Dilworth is the Vice President responsible for the activities of this office. Information: <http://www.uab.edu/dei/>

FERPA

The Family Educational Rights and Privacy Act (FERPA) of 1974 provides protection for all educational records related to students enrolled in an educational program. Information about your rights and protection of your records is available at the following sites:

<https://sa.uab.edu/enrollment/services/ferpa/>; If you have questions or concerns about FERPA issues, you may email FERPA@uab.edu, or contact the SHP Office for Student Recruitment, Engagement and Success.

FINANCIAL AID

Located at 1700 University Blvd., Lister Hill Library, Room G20. Hours of Operation are from 8:00 am to 5:00 pm Monday thru Friday. Phone: (205) 934-8223; Fax: (205) 975-6168. Additional information can be located on the website www.uab.edu/students/paying-for-UAB.

FOOD SERVICES

Dining facilities available on campus, closest to the SHP buildings include:

- Commons on the Green – located on the Campus Green, south of 9th Avenue and the Campus Recreation Center
- Einstein’s Bagels – located at the plaza entrance to the Learning Resource Center. Hours vary per semester.

Vending machines are located in the basement of the Learning Resource Center and on the 6th floor of the Webb Building. Additional information about meal plans and campus dining facilities is available at www.uab.edu/dining.

GRADUATE SCHOOL

The UAB Graduate School offers doctoral programs, post-master’s specialist programs, and master’s level programs. Graduate programs in SHP are coordinated through the Graduate School and students must adhere to the Graduate School policies and procedures. Graduate School information for current students is available at www.uab.edu/graduate/.

GRADUATION

All students must complete an application for degree six months prior to graduating. For more information and important deadlines please go to www.uab.edu/commencement/degree-applications. SHP holds a special commencement ceremony for graduates in the professional masters programs in the spring and fall semesters. The SHP ceremonies are scheduled on the Friday afternoon prior to the university commencement ceremonies being held the next morning on Saturday. The University holds commencement every semester. Check the commencement website for the most current information: <http://www.uab.edu/commencement/>

STUDENT HEALTH AND WELLNESS

The University provides prevention, counseling, and treatment services to students through the UAB Student Health and Wellness located at 1714 9th Avenue South. The clinic is open from 8:00 a.m. – 5:00

p.m. Monday – Friday, but is closed between noon and 1:00 p.m. daily. Detailed information about services and operating practices is located on the SHS website at www.uab.edu/studenthealth. Appointments may be scheduled by calling 205-934-3581.

MEDICAL CLEARANCE

SHP students are required to receive medical clearance at the time of program admission. UAB Student Health and Wellness utilizes a secure web-based process for the storage of required documents accessed through BlazerNET. More information is available at the Student Health and Wellness website: www.uab.edu/students/health/medical-clearance/immunizations.

HIPAA TRAINING

The Health Insurance Portability and Accountability Act includes significant requirements for protecting individual privacy of health information. All students in the School of Health Professions must complete an online tutorial and be tested on HIPAA regulations at the time of program admission. A BlazerID is required to access the training site, located at www.uab.edu/learningsystem. Compliance with the training requirement is monitored monthly. Students who have not completed the training are reported to the Office for Student Recruitment, Engagement, and Success for follow-up with the appropriate program director.

INSTITUTIONAL REVIEW BOARD FOR HUMAN USE (IRB)

Student researchers must comply with all requirements for protection of human subjects. Detailed information is available on the IRB website www.uab.edu/irb

INTELLECTUAL PROPERTY

Intellectual property refers to an asset that originated conceptually, such as literary and artistic works, inventions, or other creative works. These assets should be protected and used only as the creator intends. Training materials defining inventor status, patent criteria, and other intellectual property issues is available at www.uab.edu/research/administration/offices/OSP/Pages/Training.aspx.

LACTATION CENTERS

Through the work of the UAB Commission on the Status of Women, the University has provided several lactation centers for students, faculty, and staff across the campus. Locations of the centers are available at www.uab.edu/women/resources/campus-lactation-centers.

LIBRARIES AND LEARNING RESOURCE CENTER

UAB's libraries house excellent collections of books, periodicals, microforms, and other media. have online remote access to catalogs and online collections. Computers are available for student use during regular hours of operation.

Learning Resource Center (LRC)

The School of Health Professions Learning Resource Center (LRC) provides a unique set of enterprise solutions that promote an exciting, intriguing and innovative learning environment. It

provides a state-of-the-art media studio; audio/visual support; and information technology management of public, classroom and testing labs. Web: <http://www.uab.edu/lrc/>

Located: 1714 9th Avenue S. Phone: (205) 934-5146 Email: shplrc@uab.edu
Hours: Monday – Thursday 7:00 am – 8 pm; Friday 7 am – 5:30 pm; closed weekends

Lister Hill Library of the Health Sciences

This is the largest biomedical library in Alabama, and one of the largest in the south. Located across the crosswalk from the School, the LHL has extension libraries in University Hospital and The Kirklin Clinic. Dedicated librarians hold “office hours” in the Learning Resource Center weekly.

Location: 1700 University Boulevard Phone: (205) 934-2230

Website: www.uab.edu/lister/

Mervyn H. Sterne Library

A collection of more than one million items supporting teaching and research in the arts and humanities, business, education, engineering, natural sciences and mathematics, and social and behavioral sciences.

Location: 913 13th Street South Website: www.mhsl.uab.edu

Phone: (205) 934-6364 (Reference) (205) 934-4338 (User Services)

ONESTOP STUDENT SERVICES

If you have questions or need assistance with an academic or administrative process, the UAB OneStop is where to go! Advisers will help you solve your problem or do the legwork for you if another UAB resource is needed. OneStop is located in the Hill Student Center 1400 University Blvd. You may contact the OneStop office by phone or email at (205) 934-4300; 855-UAB-1STP; (855) 822-1787. onestop@uab.edu. Additional information is available at www.uab.edu/onestop.

PARKING

Student vehicles must be registered with UAB Parking and Transportation Services, located at 608 8th Street South. The office is open Monday – Friday from 7:30 a.m. – 5:00 p.m. Parking is allocated on a first-come, first-served basis. Parking fees are established by location, payable by semester or year, and are billed to the student’s account. Additional information is available at www.uab.edu/parking.

PATIENT CARE PARTNERSHIP

Students in health professions programs learn general information about the health care industry as well as knowledge and skills specific to their chosen profession. The American Hospital Association (AHA) (www.aha.org) is an excellent resource for industry information. One role fulfilled by the AHA is that of patient advocate. The Patient Care Partnership brochure (link below) outlines rights and responsibilities of patients during hospital stays. www.aha.org/aha/issues/Communicating-With-Patients/pt-care-partnership.html.

PLAGIARISM AND TURNITIN

Plagiarism is academic misconduct that will result in a grade of zero and may result in dismissal from the School of Health Professions and UAB (see Grievance Procedures for Violations of Academic Standards). All papers submitted for grading in any SHP program may be reviewed using the online plagiarism monitoring software. Please note that all documents submitted to *Turnitin.com* are added to their database of papers that is used to screen future assignments for plagiarism.

RECREATION CENTER

The campus Recreation Center, located at 1501 University Blvd, Birmingham, AL 35294, is open to faculty, staff, students, and their families. A valid student identification card or membership card is required for access. Facilities include basketball courts, racquetball courts, weight rooms, swimming pools, exercise rooms, and indoor track. Check the website for information about hours and services at www.uab.edu/campusrecreation.

SCHOLARSHIPS: BLAZER SCHOLARSHIP MANAGEMENT AND RESOURCE TOOL (B-SMART)

The OSRES manages the School of Health Professions' scholarship offerings and will send reminders to students when applications are open. Visit B Smart and start an application to automatically be considered for scholarship opportunities in SHP.

OSRES manages the following:

National Alumni Society Dean's Scholarship – Funding from the UAB National Alumni Society for two scholarships per year, one to a graduate student and one to an undergraduate student.

Ethel M. and Jessie D. Smith Endowed Nursing and Allied Health Scholarship – Funding for students enrolled in SHP programs with GPA 3.0 or above and unmet financial need. Student must be a resident of the state of Alabama at the time of enrollment.

Carol E. Medders Endowed Scholarship – Funding for students enrolled in a graduate program in the School of Health Professions. Awards are based on academic achievement and unmet financial need.

Lettie Pate Whitehead Foundation Scholarship – Funding for female students from selected states (AL, FL, GA, LA, MS, NC, SC, TN) enrolled in SHP programs. Award amounts are variable and are based on unmet financial need.

Matthew F. McNulty Jr. Health Services Emergency Loan – Students enrolled in any SHP program may apply for this low interest loan to address emergencies. Loan amounts are variable based on need.

SHP Dean's Scholarship – Funding to recruit or retain outstanding students. Awards are based on academic achievement, and unmet financial need.

Sandra Dunning Huechtker Endowed Memorial Award – Funding for students enrolled in SHP program with GPA 3.0 or above and unmet financial need.

You must visit B-SMART <http://www.uab.edu/students/paying-for-college/> to apply.

Many programs in SHP also have scholarships available to currently enrolled students. Please see the program section of this handbook for that information.

SOCIAL MEDIA

Social media can serve as useful communication tools. However, health professions students should use the forums judiciously. The School's official sites are the following:

- Twitter: https://twitter.com/uab_shp
- Facebook: www.facebook.com/UABSHP
- YouTube: www.youtube.com/uabshp
- Vimeo: <http://vimeo.com/uabshp>
- LinkedIn: www.linkedin.com/groups?gid=3596638
- Website: www.uab.edu/shp

The School's Academic Affairs Committee published the following guidelines:

The Academic Affairs Committee proposes the following for social networking vehicles. Online communities like provide opportunities to share and explore interests that enrich the higher education learning experience. However, use them with discretion. UAB social media users are expected to act with honesty, integrity, and respect for others.

Professional Use - Only UAB employees authorized by their departments may use social networking Web sites to conduct University business. The authorized employee/position will serve as the point of contact for the web site. In keeping with University policy¹, the authorized employee may post on a social network profile: the University's name, school, department, and/or unit information, a University email address or University telephone number for contact purposes, or post official department information, resources, calendars, and events. The employee should use care that any personal opinions or opposition to the University either by direct statement or perception not be published.

General Use - The following guidelines are strongly suggested:

1. Use networking sites legally and appropriately. Consider your personal obligation as a citizen of the university. Use proper conduct in your posts regarding the university and your colleagues/fellow students.
2. Consider the use of a student, staff or faculty member to monitor any departmental social pages. All parties need to understand the guidelines presented.
3. Remember, you cannot ensure who does and does not have access to your information. Any text or photo placed online is available to anyone in the world – even if you limit access to your site.
4. Information that you post online may continue to stay on the World Wide Web even after you erase or delete that information from your profiles or blog. Do not post anything that could reflect negatively on you, your family, your friends, and the university.
5. Do not post any confidential or sensitive information online.
6. By agreeing to the terms of use, online communities have your permission to republish your content worldwide and share information with advertisers, third parties, law enforcement, and others.
7. You are legally responsible for your posts on the social networking sites. Be discreet, respectful, and as accurate/factual as you can be in any comments or content you posted online.
8. Potential employers, admissions officers, and scholarship committees often search social networking sites to screen candidates. Your profile will be a part of how others know you.

TUITION AND FEES

Tuition and fees for the University are published annually under the "Current Students" tab of the UAB website. They may be paid through BlazerNET. There are two tuition rates: Alabama resident (in-state) and Non-resident (out-of-state). Currently, non-resident students who register for online course sections pay resident tuition. Non-resident tuition is charged for on-site courses such as: clinical practicums, independent study courses, and project courses.

SHP programs have specific fees attached to programs, courses or laboratories. These fees are addressed in the program section of this handbook. Current standard tuition and fees for the School are posted at www.uab.edu/shp/home/admissions-tuition/tuition.

Payment deadlines for each semester are published on the official academic calendar and on the UAB website at www.uab.edu/whentopay/. Please note that failure to meet payment deadlines can result in being administratively withdrawn from courses.

WEATHER

Severe weather situations that may affect the safety of students, faculty, and staff are communicated through the same channels as other emergencies. Severe weather precautions are published at www.uab.edu/emergency/preparedness. Other information sources include:

<ul style="list-style-type: none">• Webpage: www.uab.edu/emergency	<ul style="list-style-type: none">• B-ALERT system: www.uab.edu/balert
<ul style="list-style-type: none">• Hotline: (205)- 934-2165	<ul style="list-style-type: none">• WBHM Radio (90.3 FM)

WITHDRAWAL FROM COURSE / PROGRAM

Withdrawal from a course or from your program is an official process and should be discussed with your academic advisor and / or program director. Most programs in the School are full-time and the curricula specifically sequenced. Withdrawal from a course may risk your wait time to register for the class again. You might have to wait for a full year before resuming enrollment in the program. Withdrawals are made through the UAB registration system via the Student Resources tab in BlazerNET. Notice of program withdrawal should be given in writing to the program director. Please refer to the handbook for additional information.

Check the Academic Calendar for deadlines: <https://www.uab.edu/students/academics/academic-calendar>

SECTION 2 – SHP AND UAB POLICIES

SCHOOL OF HEALTH PROFESSIONS POLICIES

BACKGROUND CHECK AND DRUG SCREEN

www.uab.edu/shp/home/images/PDF/SHP_Background_and_Drug_Screen_Policy05_2012.pdf

GRIEVANCE PROCEDURES FOR VIOLATIONS OF ACADEMIC STANDARDS

www.uab.edu/shp/home/images/PDF/grievance_procedures.pdf

IMPAIRMENT AND SUBSTANCE ABUSE

www.uab.edu/shp/home/images/PDF/shp%20substance%20abuse%20policy.pdf

PLAGIARISM

www.uab.edu/shp/home/images/PDF/Plagiarism_Policy.pdf

Please note that all papers submitted for grading in any SHP program may be reviewed using the online plagiarism monitoring software, Turnitin.com. All documents submitted to Turnitin.com are added to their database of papers used to screen future assignments for plagiarism.

UAB POLICIES

CLASSROOM BEHAVIORS

ATTENDANCE / ABSENCE (UNDERGRADUATE)

<http://catalog.uab.edu/undergraduate/progress toward a degree/#enrollmenttext>

HEALTH

AIDS AND HIV INFECTION

www.uab.edu/policies/content/Pages/UAB-HS-POL-0000252.aspx

BODY FLUID EXPOSURE

www.uab.edu/humanresources/home/employeehealth/reportingexposures

IMMUNIZATIONS

www.uab.edu/policies/content/Pages/UAB-AD-POL-0000086.aspx

SUBSTANCE USE/ABUSE

ALCOHOLIC BEVERAGES, USE AND CONSUMPTION

www.uab.edu/policies/content/Pages/UAB-AD-POL-0000071.aspx

DRUG FREE CAMPUS (GENERAL POLICY)

www.uab.edu/policies/content/Pages/UAB--POL-0000046.aspx

Drug-free Campus Policy for Students (Attachments)

Attachment A - www.uab.edu/policies/content/Pages/UAB--GDL-0000632.aspx

Attachment B - www.uab.edu/policies/content/Pages/UAB--GDL-0000626.aspx

Attachment B.1 - www.uab.edu/policies/content/Pages/UAB-AD-GDL-0000627.aspx

Attachment C - www.uab.edu/policies/content/Pages/UAB--GDL-0000628.aspx

NONSMOKING

www.uab.edu/policies/content/Pages/UAB-HS-POL-0000110.aspx

TECHNOLOGY GUIDELINES

COMPUTER AND NETWORK RESOURCES (ACCEPTABLE USE)

www.uab.edu/policies/content/Pages/UAB-IT-POL-0000004.aspx

COMPUTER SOFTWARE COPYING AND USE

www.uab.edu/policies/content/Pages/UAB-IT-POL-0000028.aspx

INCLUSIVENESS

EQUAL OPPORTUNITY AND DISCRIMINATORY HARASSMENT

www.uab.edu/policies/content/Pages/UAB-BT-POL-0000052.aspx

RESEARCH AND SCHOLARLY ACTIVITIES

ETHICAL STANDARDS IN RESEARCH AND OTHER SCHOLARLY ACTIVITIES

www.uab.edu/policies/content/Pages/UAB-RA-POL-0000263.aspx

PATENT (INTELLECTUAL PROPERTY)

www.uab.edu/policies/content/Pages/UAB-RA-POL-0000115.aspx

FIREARMS, AMMUNITION, AND OTHER DANGEROUS WEAPONS

www.uab.edu/policies/content/Pages/UAB-HR-POL-0000257.aspx

Note: Additional university policies may be located by searching the UAB Policies and Procedures Library available online at www.uab.edu/policies/Pages/default.aspx.

SECTION 3 – DEPARTMENTAL POLICIES

DEPARTMENT OF CLINICAL AND DIAGNOSTIC SCIENCES (CDS)

Welcome

The Department of Clinical and Diagnostic Sciences is comprised of academic programs essential to today's healthcare system. Our programs provide training for future health care professionals in a variety of disciplines ranging from the diagnosis of illness and disease, the administration of advanced treatment therapies, and the performance of vital roles in surgical suites and in outpatient and inpatient healthcare settings. Graduates of our programs are well poised for a wide variety of job opportunities due to the outstanding education received at UAB.

About the Department

Comprised of multiple academic programs, the Department of Clinical & Diagnostic Sciences provides training for tomorrow's health care professionals from physician assistants and genetic counselors to nuclear medicine technologists. Students receive hands-on training from renowned faculty while using the tools to prepare them for a career in health care.

CDS Professional Development Program

Professional success after graduation requires many skills beyond the discipline specific technical skills that each student will master during their program. The CDS Professional Development Program is designed to provide students with a strong foundation in a variety of non-technical skills such as interpersonal communication and team based care. The program also provides practical instruction in areas such as professional networking and interviewing to enable students to be successful job candidates upon graduation. Each student will be provided with detailed information about the Professional Development Program activities and assignments.

Accreditation Information

The accrediting agencies for programs offered by the Department include:

Program	Accreditation
Physician Assistant Studies (PAS)	Accreditation Review Committee for Physician Assistant, Inc. (ARC-PA) http://www.arc-pa.org/
Nuclear Medicine Technology (NMT)	Joint Review Committee for Nuclear Medicine Technology (JRCNMT) http://jrcnmt.org/
Clinical Laboratory Sciences (CLS)	National Accrediting Agency for Clinical Laboratory Sciences (NAACLS) http://www.naacls.org/
Genetic Counseling (GC)	Accreditation Council for Genetic Counseling (ACGC) http://www.gceducation.org

CDS POLICIES

ACADEMIC PROGRESS

Academic Progress Review is implemented to promote, assist, and maintain student performance. The main purpose is to provide feedback to students regarding their performance and to identify areas of strength and/or weakness in performance or behavior.

Generally speaking, program faculty, and/or the program director, may academically counsel students on a semester-by-semester basis to assess progress in the curriculum and to provide students counseling regarding deficiencies as needed. These meetings may be documented and the student may be required to sign the documentation of the academic progress sessions with associated notes placed in the student's file.

In cases regarding deficiencies, suggestions and/or action plans may be developed in conjunction with the student so as to provide a plan for reversing the deficiencies by a specified timeframe. Such suggestions and/or action plans will be documented and signed (by both faculty and the student) and will be placed in the student's file. If a student does not comply with the suggestions and/or action plan and/or does not meet the deadlines as specified, the student may be dismissed from the program.

ATTENDANCE AND EXCUSED ABSENCES

CDS Attendance Policy

Attendance is mandatory for all classes, lectures, labs, program-related seminars, clinical practice, internships, etc.

Absences are either excused or unexcused and both require timely notification to the course instructor. Students who are absent during clinical practice or an internship must notify both the program clinical practice coordinator/internship coordinator and the clinical practice instructor/clinical internship instructor as soon as possible. Time missed during clinical practice or the internship must be made up and this may result in a delay in graduation.

Below is a list of excused absences recognized by the Department of Clinical and Diagnostic Sciences and UAB:

- Absences due to jury or military duty, provided that official documentation has been provided to the instructor in a timely manner in advance.
- Absences of students registered with Disabilities Services for disabilities eligible for "a reasonable number of disability-related absences," provided students give their instructors notice of a disability related absence in advance or as soon as possible.
- Absences due to participation in university-sponsored activities when the student is representing the university in an official capacity and as a critical participant, provided that the procedures below have been followed:

- Before the end of the add/drop period, students must provide their instructor a schedule of anticipated excused absences in or with a letter explaining the nature of the expected absences from the director of the unit or department sponsoring the activity.
- If a change in the absence schedule occurs, students are responsible for providing their instructors with advance notification from the sponsoring unit or department.
- Absences due to other extenuating circumstances that instructors deem excused. Such classification is at the discretion of the instructor and is predicated upon consistent treatment of all students.
- Absences due to religious observations provided that students give faculty written notice prior to the drop/add deadline of the term.

In instances resulting in unavoidable absence(s), a student is expected to inform the program office and the associated course instructor in advance of the planned absence. For unforeseen events (car accident or breakdown, injury), the student is expected to notify the program and course instructor at the earliest possible time.

Make-up of missed class information or assignments is the student's responsibility. Make-up of class activities and projects is at the discretion of the course faculty – refer to individual course syllabi for more detailed attendance policies pertaining to the course.

*NOTE: The program cannot guarantee that all work missed for an excused absence can be made up. Some activities (including laboratories) due to their complex, time intensive, and/or cost intensive nature will not be able to be made up. Similarly, when students arrive to laboratories late they risk missing important information/directions that may adversely affect their grade. Instructors are not obligated to repeat directions for students when they are tardy.

ATTENDANCE INFRACTIONS

For each unexcused absence, there will be a 1% overall grade reduction for that course or lab per absence. Two tardies will equal one unexcused absence. A tardy is considered being more than 10 minutes late to class. Faculty may choose to include attendance and timeliness in grading criteria and may implement a more restrictive attendance policy. The attendance policy for each course will be described in all course syllabi. The Department of Clinical and Diagnostic Sciences also reserves the right to institute an attendance policy for official program/department activities.

CONSENSUAL ROMANTIC RELATIONSHIPS

<http://www.uab.edu/policies/content/Pages/UAB-HR-POL-0000254.aspx>

DATA PROTECTION AND SECURITY

<http://www.uab.edu/policies/content/Pages/UAB-IT-POL-0000038.aspx>

DRESS CODE

Guidelines for professional attire require consideration for patients, visitors, and coworkers, as well as personal safety. Therefore, CDS students are expected to promote a professional image by following these guidelines.

Clothing:

- Clothing should be clean, neat, in good repair, and appropriate for the profession.
- Casual or athletic wear, such as sweat suits or warm-up pants, are not acceptable.
- Shorts are not acceptable.
- Skirt length shall be no shorter than two inches above the top of the knee and may not be tight fitting.
- Undergarments shall be worn and shall not be visible, even when in stretching or bending positions.
- Shoes shall be appropriate for the work environment and compliant with professional attire. Flip flops are not appropriate.
- Caps or head coverings are not acceptable unless they are for religious purposes or are part of a uniform.
- Sunshades (or hand-tinted, non-prescription glasses) shall not be worn unless they are required for medical purposes.
- Identification badges shall be worn at all times.

Grooming:

Piercings

- Facial and/or body adornments are not permitted other than in the ear lobe.
- No more than two pairs of earrings may be worn. Earrings will be no longer than one inch in diameter or length.

Hair

- Hair should be clean and neat.
- Hair may not be dyed unnatural colors and/or have patterns.
- Hair ornaments should be moderate and in good taste.
- Hair should be well-groomed, closely trimmed beards, sideburns, and mustaches are allowed.

Daily Hygiene

- Daily hygiene must include clean teeth, hair, clothes, and body, including use of deodorant.

In addition to these basic guidelines, students are expected to follow any additional provisions of a facilities dress code while in clinical practice.

Dress Code Infractions:

Failure to comply with the above dress code requirements will result in removal from program activities until requirements are met. Students will be counted as absent (unexcused) and will receive a grade of zero for any missed work during that time with no opportunity to make-up the missed work.

****Note- The above Dress Code is a minimum standard set forth by the Department of Clinical and Diagnostic Sciences. Each program and/or course within CDS has the liberty to set forth and enforce a stricter dress code. Similarly, clinics also have their own dress codes that must be followed precisely.***

FOOD AND DRINK IN THE CLASSROOM

Food or drinks in laboratories is prohibited. Food and drink in classrooms is allowed at the discretion of faculty.

GRADING POLICY

In each CDS course, the instructor will announce the grading criteria and publish it in the course syllabus. The following policy relating to the “I” (incomplete) grade or deferred credit supplements the School of Health Professions’ policy.

INCOMPLETE & DEFERRED CREDIT POLICY

The awarding of an “I” (incomplete) grade is not done lightly. An “I” will be given only when an emergency or unexpected event prohibits the student from meeting course objectives in a timely manner. A student receiving a grade of “I” (incomplete) must arrange with the instructor to complete the course requirements as soon as possible, and in order to progress within the program the student must arrange to complete the requirements prior to the final day of registration for the next term. A grade of “I” not changed by the instructor by the beginning of the next regular term will automatically convert to an “F.”

INFECTION CONTROL

Because students are working with patients having low immunities, the clinical supervisor reserves the right to send any student to UAB Student Health Services if the need arises. The clinical supervisor will call UAB Student Health and Wellness and request that the student be sent off duty if he/she has an infection of any kind. The student must then acquire a doctor’s written permission to return to clinical education. Students are required to adhere to the policy of the clinical affiliate for working with patients with local infections or infectious diseases. Students are required to inquire about this policy at the beginning of rotation through a clinical affiliate.

LIABILITY INSURANCE

Liability insurance is provided by the University for all students registered for clinical education courses. The coverage protects students in any assigned clinical site to which they are assigned as a student.

NON-ACADEMIC STUDENT CONDUCT

<http://www.uab.edu/2015compliancecertification/IMAGES/SOURCE1F03.PDF?id=415eda97-a4fc-e311-b111-86539cf2d30e>

NON-RESIDENT TUITION POLICY

<http://www.uab.edu/shp/cds/images/PDF/Policies/shpnon-residenttuitionpolicy.pdf>

PREGNANCY POLICY

All students are encouraged to inform the program director immediately in writing once pregnancy has been confirmed. If students choose not to inform the program of their pregnancy, the program will not consider them pregnant and cannot exercise options that could protect the fetus.

For students who voluntarily disclose pregnancy the program director will discuss factors to be considered in cases of pregnancy with the student based on acceptable professional guidelines.

A student is offered three alternatives after the consultation with the program director. These are:

1. Immediate withdrawal in good standing from the program. Readmission to the program after the pregnancy will be in accordance with the Readmit Policy.
2. Continuation in the program after being given specific instruction regarding safety practices, safety monitoring, and specific clinical and laboratory assignments.
3. Continuation in the program with additional safety monitoring but without modification of assignments.

The student must be able to progress in her educational experiences, both clinical and academic. If the student cannot, she will be strongly advised to withdraw as in alternative number one.

If there are any questions regarding any aspect of the above statements, please call the Program Director.

SECTION 4 – PROGRAM INFORMATION

WELCOME

Welcome to the UAB **Bachelor of Science in Biomedical Sciences (BMD) Program**. This student handbook has been compiled to provide you with information to help you as you progress through your program. Here are some of the reasons you made the right choice in selecting the B.S. in Biomedical Sciences.

- The Bachelor of Science in Biomedical Sciences program prepares graduates for health-related graduate and professional study or for entry into the biomedical science workforce.
- This program is built on a strong biomedical sciences curriculum that includes advanced coursework in physiology, pharmacology, clinical biochemistry, medical microbiology and immunology, and the pathological basis of disease; all taught in an integrated systems-based approach that focuses on human health, disease, and wellness.
- Numerous elective options allow students to incorporate many of the prerequisites for graduate program admission into the biomedical sciences program of study.
- This program allows students to create a tailored undergraduate educational experience to prepare for further study in an area of choice; such as physician assistant studies, medicine, dentistry, optometry, physical therapy, biotechnology, clinical laboratory science, genetic counseling, and many more.

Please take the time to read the student handbook and use it as your guide as you matriculate through the Bachelor of Science in Biomedical Sciences program. Where appropriate, the contact for more detailed information on various subjects has been included. The UAB web page links are included for some of the sections of this handbook and you are encouraged to review the links for information you may need. The UAB and School of Health Professions (SHP) pages have search engines to allow you to input keywords and find information. The campus directory and calendars are located on the main UAB page: www.uab.edu. If you need further explanation of any matter contained in this handbook, please contact the BMD program.

FACULTY & STAFF

The faculty and staff of the Biomedical Sciences program are prepared to deliver high quality education to all BMD students, and are committed to the growth of future professionals. The Biomedical Sciences program draws faculty from many disciplines and professional programs in the School of Health Professions and the Joint Health Sciences programs.

Biomedical Sciences Program Faculty and Staff



Kari J. Dugger, PhD

Program Director and Associate Professor

Department of Clinical & Diagnostic Sciences

1716 9th Avenue South, SHPB 472

(205) 934-7635

kdugger@uab.edu

Courses Taught: BMD 315, BMD 317 and BMD 475



Fred "Ted" Bertrand, PhD

Assistant Dean of SHP Undergraduate Research and Honors Program and Associate Professor

Department of Clinical & Diagnostic Sciences

1716 9th Avenue South, SHPB 473

(205) 934-1374

fbrtrnd@uab.edu

Courses Taught: SHP Honors Coursework and Guest Lectures for BMD 320 and BMD 330



Kristin J. Chapleau, MaE

Program Manager and Instructor

Department of Clinical & Diagnostic Sciences

1716 9th Avenue South, SHPB 424B

(205) 996-4721

kjohnsto@uab.edu

Courses Taught: HRP 101, BMD 150, BMD 201 and BMD 495



Katie Defnall
Academic Advisor I

Department of Clinical & Diagnostic Sciences
1716 9th Avenue South, SHPB 424A
(205) 996-1354
kdefnall@uab.edu



N. Robert Estes II, PhD
Assistant Professor

Department of Clinical & Diagnostic Sciences
1716 9th Avenue South, SHPB 424D
(205) 934-7222
nrestes@uab.edu

Courses Taught: BMD 315, BMD 317, BMD 420 and BMD 475



Samantha Giordano, Ph.D.
Assistant Professor

Department of Clinical and Diagnostic Sciences
1716 9th Avenue South, SHPB 425
(205) 996-1399
sgiordan@uab.edu

Courses Taught: BMD 320 and BMD 330



Brooke H. Walker, MS
Student Counselor III (Lead Student Counselor)

Department of Clinical & Diagnostic Sciences
1716 9th Avenue South, SHPB 424C
(205) 996-4942
bhwalker@uab.edu

Additional Program Teaching Faculty



Bradley Barger, Ph.D.
Assistant Professor

College of Medicine, Department of Cell, Developmental and Integrative
Biology (CDIB)
Office Hours in LRC
205-934-5051
jbbarger@uab.edu

Courses Taught: BMD 310



R. Lynn Holt, MS, CGC
Assistant Professor

Department of Clinical & Diagnostic Sciences
1716 9th Avenue South, SHPB 441
(205) 975-2922
lynnholt@uab.edu

Courses Taught: BMD 420



M. Tino Unlap, PhD
Biotechnology Program Director and Associate Professor

Department of Clinical & Diagnostic Sciences
1716 9th Avenue South, SHPB 443
(205) 934-7382
unlap@uab.edu

Courses Taught: Guest Lectures for BMD 410, BMD 300 and BMD 400



Tyler Wright, Ph.D.
Assistant Professor

Department of Clinical & Diagnostic Sciences
1716 9th Avenue South, SHPB 474
(205) 934-5987
ttwright@uab.edu

Courses Taught: BMD 410

For student questions, please email BMD@uab.edu

PROGRAM INTRODUCTION

The Bachelor of Science in Biomedical Sciences program at The University of Alabama at Birmingham was established in July of 2013. Its faculty and staff are committed to providing high quality educational opportunities that prepare students for health-related graduate and professional study or for entry into one of the fastest growing occupational sectors. This program is built on a strong biomedical sciences curriculum that includes advanced coursework in physiology, pharmacology, clinical biochemistry, medical microbiology and immunology, and the pathological basis of disease; all taught in an integrated systems-based approach that focuses on human health, disease, and wellness. Furthermore, numerous elective options allow students to incorporate many of the prerequisites for graduate program admission into the biomedical sciences program of study. This allows students to create a tailored undergraduate educational experience to prepare for further study in an area of choice; such as physician assistant studies, medicine, dentistry, optometry, physical therapy, biotechnology, clinical laboratory science, genetic counseling, and many more.

BMD PROGRAM MISSION STATEMENT

Our mission is to provide a human-based science education to a set of diverse, qualified and motivated undergraduate students in an inclusive community using clinical perspectives to develop critical thinking, teamwork and communication skills. We offer expert faculty that are approachable and committed to preparing students for an assortment of careers in healthcare and the biomedical sciences.

BMD PROGRAM GOALS

The Bachelor of Science in Biomedical Sciences Program goals are as follows:

1. To deliver an academically sound program of study that develops the knowledge and skills required of students entering graduate or professional study in the health professions.
2. To recruit and retain well qualified diverse students.
3. To employ teaching formats and instructional media appropriate to achieve desired learning outcomes.
4. To provide a supportive and stimulating environment for faculty to achieve excellence in teaching and scholarly activities.

ADMISSION TO THE BACHELOR OF SCIENCE IN BIOMEDICAL SCIENCES PROGRAM

Admission options are based on the student's previous academic work and personal interests. Students intending to enroll in the Bachelor of Science in Biomedical Sciences (BMD) program must meet all UAB undergraduate admission and academic requirements. The following requirements apply and must be met prior to enrolling into the BMD program.

1. Students must declare the Biomedical Sciences major and meet with a BMD advisor prior to enrollment in the BMD program. A background check, drug screen, and health-related

information are required at the time of enrollment in the core BMD courses and required prior to any practicum or lab placements.

2. Program Admission from High School.

- Must be a graduate of an accredited high school with a grade point average of a 2.75 or higher on a 4.0 scale for admission.
- Achieved an ACT Composite Score of 22 or higher.
- Able to place in College English 101 or higher and College Math 105 or higher.
- Must meet all UAB undergraduate admission and academic requirements.
- If accepted, complete the UAB medical history questionnaire and physical, provide proof of required immunizations, and receive satisfactory screening by the UAB Medical Center Student Health Service.

3. Program Admission from Community College or University, including UAB.

- Must be a graduate of an accredited high school.
- Must meet all UAB undergraduate admission and academic requirements.
- If accepted, complete the UAB medical history questionnaire and physical, provide proof of required immunizations, and receive satisfactory screening by the UAB Medical Center Student Health Service.
- Must hold a 2.75 or higher Overall GPA on a 4.0 scale for admission to the Biomedical Sciences Program.
- Must be in or have completed college English 101 or higher and Pre-calculus MA 105 or higher.

4. Other Biomedical Sciences Program Requirements.

- All prerequisite Area V and BMD course work must be completed with a grade of C or better.
- A minimum 2.75 Overall GPA and 2.00 UAB institutional GPA must be maintained to remain enrolled in the B.S. in Biomedical Sciences program.

Overall Application Procedure:

Applications are accepted at any time, and students may be enrolled during any term. Applicants should submit the following materials:

To the UAB Undergraduate Admissions Office:

- Completed UAB undergraduate application form, indicating SHP as the school and BMD as major, and application fee, if applicable (if enrolled at UAB in another major, complete a Change of School/Major Request using the online form available on [BlazerNET](#)).
- Official transcripts from each college or university attended.

To the Biomedical Sciences Program Office in the School of Health Professions:

- The student should request an appointment with a Biomedical Sciences program advisor prior to the term of initial enrollment. It is essential to have transcripts of previous coursework available during the enrollment meeting.

CURRICULUM

Students in the undergraduate Biomedical Sciences Program complete specific courses according to a planned and structured program of study. Students fulfill both core degree requirements and major/professional curriculum requirements in a logical sequence. The sequence is intended to facilitate success in the overall degree requirements.

Through the curriculum, students develop communication skills, acquire interdisciplinary knowledge in the biomedical sciences, and develop critical thinking and problem solving skills applicable to scientific, public and clinical issues. Students also develop their ability to acquire and evaluate new knowledge and perspectives critically, and to communicate their ideas to others effectively. The core curriculum enables students to learn about ethnic, cultural, and social groups other than their own. Exposure to diversity in the academic setting enhances performance in a multicultural work setting.

Graduates should demonstrate achievement of the following professional curriculum goals:

- Communicate effectively in speaking and writing
- Demonstrate a fundamental knowledge in the biomedical sciences
- Solve problems by generating, evaluating, and selecting alternative solutions
- Acquire and synthesize knowledge from diverse sources
- Critically evaluate scientific results and apply key findings to the biomedical sciences and clinical situations
- Demonstrate ethical reasoning by analyzing, evaluating, and defending decisions regarding ethical and clinical issues

UAB Core Curriculum Requirements for the Biomedical Sciences Program

UAB/Program Core Curriculum (UAB Equivalents)	Semester Hours
Area I. Written Composition (6 hours) English Composition I, II (EH 101,102)	6
Area II. Humanities and Fine Arts (12 hours) Literature ¹ Fine Arts Elective Electives ¹	3-6 3 6-9
Area III. Natural Sciences and Mathematics (11 hours) Pre-Calculus (MA 106) or higher ² General Chemistry I and II (CH 115/116, 117/118)	3-4 8
Area IV. History, Social, & Behavioral Sciences (12 hours) History ¹ Social & Behavioral Sciences (Anthropology, Economics, Geography, Political Science, Psychology, Sociology) ³ Elective ¹	3-6 6-9 3
Area V. Pre-professional, Major, & Elective Courses (19-23 hours) Freshman Year Experience (HRP 101 or equivalent) Introductory Biology I and II (BY 123, 124) Organic Chemistry I and II (CH 235/236, 237/238) Statistics (HCM 360, MA 180, or PY 216) Research Methods (BMD 380 or HCM 460 or PY 315)	2 8 8 3-4 3

¹ A 6-semester hour sequence either in literature or in history is required; if a second literature is chosen, it will apply as 3 of the elective hours in Area II Humanities and Fine Arts; if a second history is chosen, it will apply as 3 of the elective hours in Area IV History, Social, and Behavioral Sciences.

² Calculus I (MA 125) may be required by some post-graduate programs and is highly recommended.

³ Should be chosen based on post-graduate program pre-requisite requirements. Psychology and Sociology electives are highly recommended.

Suggested Biomedical Sciences (BMD) 4-Year Curriculum Guide

Freshman Year

Fall	Credits	Spring	Credits
EH 101 English Composition I	3	EH 102 English Composition II	3
MATH 106 Pre-Calculus or higher (MATH 125 Calculus I highly recommended)	3-4	BY 123/L Introductory Biology I/Lab	4
CH 115/116 or 114/R Introductory Chemistry I/Lab/Recitation	4	CH 117 or 119/118/R Introductory Chemistry II/Lab/Recitation	4
PY 101 Introduction to Psychology or PY 201 Honors (or equivalent Core IV elective)	3	Core IV History	3
HRP 101 Freshman Year Experience Course or equivalent	2	BMD 150 Introduction to the Biomedical Sciences	1
Total Credits:	15-16	Total Credits:	15

Sophomore Year

Fall	Credits	Spring	Credits
CH 235/236 or 234/R Organic Chemistry I/Lab/Recitation	4	CH 237/238 or 239/R Organic Chemistry II	4
BY 124/L Introductory Biology II/Lab	4	Core II or Core IV (based on sequence)	3
Core II Literature	3	NTR 222 Nutrition and Health	3
PY 212 Developmental Psychology (or equivalent Core IV elective)	3	BMD 310 Clinical Anatomy and Histology	4
BMD 201 Contemporary Issues in Biomedical Sciences	1	BMD 202 Survey of Biomedical Sciences Literature	1
Total Credits:	15	Total Credits:	15

Junior Year

Fall	Credits	Spring	Credits
BMD 315 Clinical Physiology and Pharmacology for Health Professions I	4	BMD 317 Clinical Physiology and Pharmacology for Health Professions II	4
BMD 320 Survey of Cell Biology for Health Professions	3	BMD 330 Clinical Microbiology for Health Professions	3
CMST 101 Public Speaking (or equivalent Core II elective)	3	Core II or IV History or Literature sequence	3
HCM 360 Statistics for Managers, MA 180 Introduction to Statistics, or PY 216 Elementary Statistical Methods	3-4	BMD 380 Research Methods and Scientific Literacy for the Biomedical Sciences or HCM 460 Research Methods or PY 315 Methods Psychological Research	3
PH 201 or PH 221 College or General Physics I /Lab/ Recitation or BMD Elective	3-4	PH 202 or PH 222 College or General Physics II /Lab/ Recitation or BMD Elective	3-4
Total Credits:	16-18	Total Credits:	16-17

Senior Year

Fall	Credits	Spring	Credits
BMD 410 Clinical Biochemistry for Health Professions	3	BMD 475 Capstone Experience in the Biomedical Sciences	4
BMD 420 Pathophysiology for Health Professions	4	CDS 420 Competencies in Genetics for Health Professions	2
BMD 430 Clinical Immunology for Health Professions	3	Core II Fine Arts	3
BMD Elective	3	BMD Elective	3
BMD Elective	3	BMD Elective	3
Total Credits:	16	Total Credits:	15

Total Credits for Degree: 123-127

English/Math determined by Placement or AP credit.

A 6 semester hour sequence either in Literature or History is required. If a second Literature is chosen, 3 hours of HY/SBS must be taken. If a second History is chosen, 3 hours of Humanity & Fine Arts must be taken.

Examples of Biomedical Sciences BMD Elective Courses and Minor Options

Health Care Management (HCM) Options: *HCM Minor (21 hrs)		
HCM 330*	Health Care Systems (Fall, Spring, Summer) (Prerequisite for other HCM minor courses)	3
AHS 350	Medical Terminology	3
HCM 375	Epidemiology	3
HCM 401*	Organizational Studies in Health Care (Spring)	4
HCM 403*	Operations Management in Health Care Organizations (Summer)	4
HCM 405*	Human Resources Management in Health Care Organizations (Fall)	4
HCM 407*	Strategic Management in Health Care Organizations (Fall, Spring)	3
HCM 411	Bio/Psycho/Social Issues of Aging	3
HCM 415*	Ethics for the Health Professional (Fall, Summer)	3
Biomedical Sciences (BMD) Options:		
BMD 300	Laboratory Techniques in Biotechnology I	2
BMD 400	Laboratory Techniques in Biotechnology II	2
BMD 490	Directed Readings in Biomedical Sciences	1-3
BMD 497	Directed Biomedical Sciences Research Studies	1-3
Clinical & Diagnostic Sciences (CDS) Options:		
CDS 301	Microbiology Laboratory for Health Professions (Spring)	1
CDS 400	Fundamentals of Phlebotomy & Body Fluid Collection (Fall, Spring, online) (Simulation only)	1
CDS 405	Survival Spanish for Health Professionals (Fall, Spring, Summer, online)	1
CDS 425	First Aid & Healthcare Provider CPR/AED (Fall, Spring, Summer)	1
CDS 430	Advanced Cardiac Life Support (Fall, Spring, Summer)	1
CDS 550	Medical History Taking and Physical Exam (Spring)	2
Exercise Science (PE) Options: *Exercise Science Minor (19 hrs)		
<p>Students majoring in Biomedical Sciences only may substitute BMD310, BMD315, CDS425 and HE222 in lieu of BY115, BY116, HE140 and HE141/HPE200, respectively; and are required to take PE307. Students may need to take additional electives to reach the 19 hour requirement in order to receive the minor [e.g. students who fulfill the HE140 0 hour waiver, and if they are majoring in Biomedical Sciences].</p>		
HE 140*	First Aid	0-3
BY 115*	Human Anatomy	4
BY 116*	Human Physiology	4
HPE 200 or	Quality of Life or Personal Health	2-3

HE 141*		
PE 400*	Physiology of Exercise	4
Select 1-5 credit hours of the following electives*:		
PE 132	Group Exercise Leadership	1
PE 307	Applied Kinesiology	3
PE 402	Basic Athletic Training	2
PE 405	Sports Nutrition	3
PE 440	Principles of Conditioning the Athlete	3
PE 450	Physical Activity for Individuals with Disabilities	3
PE 451	Physical Activity for Senior Adults	3
PE 460	Clinical Exercise Physiology	3
PE 470	Advanced Athletic Training	3
PE 485	Exercise Testing and Prescription	3
PE 499	Fitness Internship	3
Nutrition (NTR) Options: *NTR Minor (18 hrs)		
NTR 222*	Nutrition and Health	3
NTR 232*	Lifecycle Nutrition	3
NTR 320*	Nutrition and the Consumer	3
NTR 330*	Nutrition and Metabolism	3
NTR 420*	Nutritional Genetics	3
	*Choose a 3 hour elective approved by the Director of the Nutrition Science Minor	3
Public Health (PUH) Options: *PUH Minor (18 hrs)		
PUH 201*	The Origins of Public Health (cross listed with PUH 301)	3
PUH 202*	Introduction to Global Health (cross listed with PUH 303)	3
PUH 302*	Epidemiology: Beyond the Outbreak	3
Select one of the following*:		
PUH 300	Environment Factors in Public Health (cross listed with ENH 400)	3
ENH 405	Nature vs. Nurture: Genes, Environment and Health	3
PUH 602	Narrative in Public Health	3
Select two elective courses*:		
	Choose two courses from any college or school within the University	6

Health Related Professions (HRP) Honors Options:		
HRP 401	Honors Seminar I	1
HRP 402	Honors Seminar II	1
HRP 410	Honors Project	1-4
Additional UAB Course Electives:		
PH 201/202	College Physics I and II with Lab	4
PH 221/222	General Physics I and II with Lab	4
BY 210	Genetics	3
BY 213	Phage Genomics I	4
BY 214	Phage Genomics II	4
PY 218	Abnormal Psychology	3

SHP Honors Program Hours: Up to 6 semester hours of School of Health Professions Honors Program courses (HRP 401, HRP 402, and HRP 410) may count as directed elective credit with Program Director's permission.

UAB Electives: Additional elective options can be approved by Program Director based on a specific student's degree and post-graduate program interests.

BMD PROGRAM ACADEMIC AND OPERATIONAL POLICIES

The Biomedical Sciences Program policies and procedures are established to provide an environment that is conducive to learning. In addition to UAB and SHP policies, the following policies include overall program operational and academic policies. Should there be a programmatic question or need not addressed in one of the published policies in this handbook, you should contact the BMD Program Director or Academic Advisor of the Program.

Academic Examinations and Testing

Students are expected to read and comply with all academic regulations as published in the UAB catalog, the SHP catalog, the UAB Class Schedule, and the BMD Handbook.

If serious circumstances, such as, illness, make absence from class unavoidable, the student is responsible for making arrangements to reschedule any missed assignments or exams within one week after the original due date. The student must obtain a signed statement from a physician or other relevant documentation and submit it to the instructor.

Quizzes and examinations may be administered through the Canvas Learn course sites, and will be given only on the scheduled dates at specified times. Scheduled examinations may be taken on an alternate date only if appropriate arrangements are made one week prior to the time of the examination. The

course syllabus will note testing requirements for each course. Failure to follow this policy may result in a grade penalty or a zero for the examination.

Make-up exams for unexcused absences will be conducted at the discretion of the course instructor. An instructor may apply a penalty or a zero for the examination. In the event of illness or family emergency, the student must obtain a signed statement from a physician or other relevant documentation and submit it to the instructor.

Scholastic Requirements

- **Program of Study:** Many courses in the BMD curriculum have designated prerequisites. Students may not take courses out of sequence without permission from the BMD program director. A student's program of study is documented following transcript evaluation and initial academic advising. Students will be provided with a curriculum plan when they begin the BMD program. Failure to adhere to the program of study may result in delays towards degree completion and graduation.
- **Curriculum Progression:** The minimum level of achievement for progression to the next course in sequential courses is a course grade of "C" in BMD and Area V.

A current student who receives a "D" or an "F" in any required BMD or Area V course while admitted to the Biomedical Sciences program will be dismissed from the program unless there are extenuating circumstances. These circumstances must be extreme in order to be considered.

In the case of extreme circumstances, the student will be suspended from the program rather than expelled, and must wait until the next time the course in which the failing grade was made is offered again. The student will then be allowed to take the course again. Under the recommendation of the program director, the student may be required to take remedial courses prior to repeating a Biomedical Sciences course. If the student passes the course, then the student may petition the program director for re-entry into the program. Re-entry into the Biomedical Sciences program is NOT guaranteed. If the student takes the course again and still fails to make a grade of "C" or greater; the student will be expelled from the program.

- **Grading:** Faculty instructors in each course are responsible for grading assignments, papers, exams, and projects. Grading criteria are published in each course syllabus.
- **Course Overload Requirements:** Students wishing to register for more than 18 semester hours in a single semester will be required to have program director permission. It is expected that students have at least an overall GPA of 3.0 in order to be granted course overload permission.

Student Responsibilities

- Maintain academic integrity by refraining from cheating. Incidents of cheating among others should be reported if and when it is witnessed.
- Check email on a daily basis.
- Turn off all cell phones and/or beepers prior to beginning class.
- Report to all class meetings on time.
- Bring all course materials to class.
- Assist in maintaining a constructive classroom environment by refraining from inappropriate disruptions or outbursts. Respectful behavior toward instructors, classmates, and guests is expected.
- Have access to a computer with MS Office software for participation in on-line work (software available through UAB at reduced cost to students.)
- Failure to meet student responsibilities may lead to counseling, reprimand, and/or probation.

Academic Misconduct

Academic Misconduct: Academic conduct generally concerns the behaviors and actions of students in the teaching/learning environment, whether on campus or at another location sponsoring a learning activity. When behaviors and actions of students are deemed unethical or inappropriate, the term academic misconduct may be applied. Examples of Academic Misconduct include, but are not necessarily limited to, Abetting, Cheating, Dishonesty, Fabrication, misrepresentation, Plagiarism, Tardiness or Unexcused Absences, and Unprofessional Behavior. A student's failure to meet technical standards shall also be handled as Academic Misconduct under this Policy.

The Biomedical Sciences Program follows and abides by the UAB School of Health Professions policies regarding Academic Misconduct. Please review these policies

at: <http://www.uab.edu/shp/home/2013-02-28-19-16-44/academic-policies-and-procedures>

Advising and Mentoring

All students in the Biomedical Sciences (BMD) Program will be assigned an academic advisor. The advisor will serve as a consultant to the student and conduct academic progress reviews. The student should plan to meet with the advisor at least once during each semester. If a student has a problem directly relating to an individual course, it is recommended that the student meet with the instructor of the course.

Mentoring, Peer Mentoring, and Tutoring are all highly recommended for BMD students to utilize. The Biomedical Sciences Program peer mentors and tutors will consist of BMD upper level students. Students can contact peer mentors and tutors through the BMD academic advisor.

Professional Student Organizations

The Biomedical Sciences Student Organization (BMD) is open to all BMD students. The Association was established in 2014 to build a communication forum for students and faculty. For more information regarding the BMD Student Organization, contact the Biomedical Sciences academic advisor or BMD program director.

Student Honor Code

In addition to the UAB Academic Honor Code, the faculty and staff of the Biomedical Sciences (BMD) Program expect an acceptable quality of work and mature behavior from every student. Students, as adults, are expected to conduct themselves accordingly and to accept responsibility for their personal behavior. In accepting this responsibility, the students in the BMD Program will not lie, cheat, or steal. A student involved in academic misconduct such as knowingly giving and/or receiving unauthorized aid in tests and examinations, plagiarizing, or any other acts of dishonesty in academic work will be recommended for immediate dismissal from the BMD Program. In addition, students who tolerate a violation of the student honor code will be subject to disciplinary action.

Dress Code

Clothing should be clean, neat, in good repair, and appropriate for class. Business casual dress is preferred for class; shorts and abbreviated tops are not acceptable.

When at internship sites, clinic sites, or research labs, students are required to adhere to the attire guidelines for that facility. Please contact the BMD program director or advisor with questions.

Students may be dismissed from the BMD program at any point during the program due to positive drug screen of illegal activity. Please refer to the policy section of this handbook for the policy statement.

MANDATORY COMPUTER OWNERSHIP POLICY FOR INCOMING BMD STUDENTS

Beginning with the Fall 2017, entering students in the School of Health Professions, Department of Clinical and Diagnostic Sciences, Biomedical Sciences undergraduate program will require that each BMD student have a laptop computer (no iPads or Android-based tablets) sufficiently equipped to be used to support essential online examination, classroom, and communication tasks before entering their 300-level BMD coursework. Upon arrival, students can be assisted in setting up their computers to access the School's wireless network and will later be shown how to make their computer eligible for use in computer-based exams. The Biomedical Sciences program is convinced that requiring all students to own portable computers will increase their productivity and efficiency, improve institutional communications, and prepare students to effectively use this essential healthcare tool.

Undergraduate students in the Biomedical Sciences program are required to use the technology components specified below.

Options for Satisfying the Computer Ownership Requirement:

- Purchase a recommended computer from UAB's TechConnect Store in the Hill University Student Center (www.uab.edu/it/home/techconnect). All computers found in the UAB TechConnect store are equipped for Biomedical Sciences' requirements. Ph. 205-934-8333
- Use a laptop computer you already own (if it meets our minimum specifications). Apple or PC have laptops that will meet our specifications.

Minimum Specifications

You are welcome to use a laptop computer that you already have, but it is important that it meet the minimum requirements to ensure that it will provide you with the type of service that you will need throughout your university career.

- i5 processor (Pentium)
- 256 hard drive
- 8 GB memory capacity

Required Software

- Microsoft Windows or Mac OS operating systems (no iPads or Android-based tablets allowed)
- Required software available to UAB students for FREE download at <https://uab.onthehub.com/WebStore/Welcome.aspx>
 - Microsoft 365 Office (word, excel, powerpoint)
 - Endnote (most recent edition)
- Canvas recommended browser is Google Chrome available online for FREE download at <https://www.google.com/chrome/browser/desktop/index.html>

Laptop Support

The UAB IT staff is prepared to help you get your computer connected to the wireless network and prepare it for use with the Canvas Lockdown Browser for computerized examinations. However, there are some services we are not equipped to provide. Services NOT provided by UAB IT:

- Internal or external hardware repair
- Computer partitioning and reformatting
- Operating system installation and restores
- Application software installation
- Backing up and restoring personal data, including photos, videos and music files
- Support for operating systems other than Windows

Please check with your software/hardware vendor or outside ISP provider if you experience any of these problems. We apologize for any inconvenience.

However, if you purchase a laptop computer from UAB's TechConnect, then you will have laptop support services such as:

- 3-year premium warranty an accident damage protection
- Pre-loaded with program-specific software
- On-site repair service and support
- Loaner provided while in repair services

GRADES

Final grades and credits for each student are recorded and preserved as a permanent record at UAB. The final grades for academic courses are compiled and proportioned to develop a final course grade. The course instructor will inform the students at the beginning of each term in each course syllabus of the system of proportioning of scores used to develop the course grade. Minimum performance criteria designated by the course instructor must be achieved by the student. These criteria indicate the level of competency of the individual student.

Grades are awarded according to the level of the student’s achievement in each course. The grades for academic courses are indicated by letters:

- A = Excellent
- B = Above Average
- C = Average
- D = Inadequate (undergraduate only)
- F = Failure
- P = Pass
- W = Withdrawal, a notation (Not a Grade) assigned by the Registrar and reflects an administrative action initiated by the student in accordance with UAB regulations.
- I* = Incomplete, a temporary notation assigned a student who has not completed course requirements.
- N = No Grade Submitted, a temporary notation made by the Registrar if the course instructor does not assign a grade prior to issuing of grade reports or when the course is designated to extend beyond a single term.
- X = Absent from Final Exam

* An “I” will be given only when an emergency or unexpected event prohibits the student from meeting course objectives in a timely manner and if there is reasonable expectation that the course requirements can be satisfactorily completed by the end of the following term. The notation of “I” will convert to an “F” unless an extension is requested specifying the date the student will complete the course requirements. Refer to the department policy for awarding a grade of Incomplete.

The student’s grade point average is calculated by dividing the total quality points earned by the semester hours attempted. Semester hours attempted is defined as the total semester hours for any course in which the student was registered on a regular basis and receives an A, B, C, D, or F. Quality points are awarded as follows:

<u>Quality Points</u>	<u>Letter Grade</u>
4	A
3	B
2	C
1	D
None	P, NP, or F

TECHNOLOGY USE IN THE CLASSROOM

UAB’s Policy

The use of any personal computational or communications devices in the classroom, not otherwise governed by UAB or course policies, is subject to the approval of the instructor. This includes (but is not limited to) the use of calculators, computers, personal digital assistants, text pagers, and cell phones. Any use of such devices without instructor approval is not permitted. The use of such devices without permission of the instructor may be considered a violation of UAB’s non-academic conduct policies. The use of such devices to facilitate an act of academic misconduct (such as cheating or plagiarism) will be considered a violation of the UAB Academic Honor Code and will be sanctioned as outlined in the Code.

<https://www.uab.edu/students/one-stop/policies/academic-honor-code>

A student must notify and get the approval of the instructor if there are circumstances that may require him/her to have access to a cell phone while in the classroom. In such cases, if permission is granted, the student must have the phone in silent mode (vibrate) and will need to exit the classroom to answer the call or respond to the text.

GUIDELINES FOR AMERICANS WITH DISABILITY ACT COMPLIANCE

BACHELOR OF SCIENCE IN BIOMEDICAL SCIENCES

Essential Functions and Technical Competencies

- I. Essential Components
 - A. Program Purpose

The B. S. in Biomedical Sciences prepares graduates for entry into the biomedical science workforce or for graduate and professional study in the health professions. This program is built on a strong clinically focused biomedical sciences curriculum with numerous elective options. Upper level coursework is restricted to individuals who have completed prerequisite coursework and attained the minimum cumulative grade point average as specified in the course catalog. All admission requirements are published in the UAB *Undergraduate Catalog*.

- B. Essential Functions and Technical Competencies

Education in the Biomedical Sciences requires the acquisition of academic knowledge, specialized communication skills, as well as professional attitudes and behaviors. Graduates must have the knowledge and skills to function in a broad variety of situations and environments. Three learning environments include, but are not limited to, the following:

1. Didactic Courses
2. Practicum/Lab Courses
3. Distance-Accessible Courses

The technical skills and essential functions required for admission, progression and completion of the B.S. Biomedical Sciences degree relative to each of these learning environments are detailed below.

Didactic Course Standards:

Technical Skill	Standard	Examples of Necessary Activities to be Performed (not all inclusive)
Critical Thinking	Critical thinking ability sufficient for the application and synthesis of course concepts.	Students should be able to identify problems and propose innovative solutions through applying principles learned in the classroom.

Interpersonal Behavior	Interpersonal abilities sufficient to interact with individuals and groups from diverse backgrounds.	Students should demonstrate an ability to establish rapport with colleagues and to work in groups on course activities.
Communication	Verbal communication abilities sufficient for interaction with others in oral and written form using the English language.	Students should be able to complete written assignments, participate in classroom discussion/activities and complete group projects. Students should also be able to focus on class activities without disruptive interruptions.
Motor Skills	Gross and fine motor abilities sufficient to complete class assignments.	Students should be able to access and use a computer when required and complete testing and assignments through the use of required computer systems.

Practicum and Lab Course Standards:

Technical Skill	Standard	Examples of Necessary Activities to be Performed (not all inclusive)
Critical Thinking	Critical thinking ability sufficient for the application of course concepts to the laboratory or practicum environment.	Students should be able to identify problems and propose innovative solutions to situations observed in the laboratory/practicum environment. Students should also be able to apply principles learned in the classroom to situations observed in the laboratory/practicum environment.
Interpersonal Behavior	Interpersonal abilities sufficient to interact with individuals and groups from diverse backgrounds.	Students should demonstrate an ability to establish rapport with colleagues and members of the community.
Communication	Verbal communication abilities sufficient for interaction with others in oral and written form using the English language.	Students should be able to document and maintain records of information and ideas from the laboratory/practicum experience. Students should also be able to articulate ideas effectively through oral (group discussions, public presentations) or written (scientific poster, manuscript writing, grant writing) means.

Motor Skills	Gross and fine motor abilities sufficient to provide safe and effective use of equipment; including the ability to sufficiently use a computer and required software.	Students should have sufficient manual dexterity to calibrate and use laboratory instruments to perform protocols that require the use of fine motor skills. Students should also demonstrate an ability to complete assignments through the required computer systems.
Hearing	Ability to communicate with others in the laboratory/practicum environment; ability to hear sufficiently to provide safe and effective use of equipment.	Students should demonstrate an ability to communicate with others in the laboratory/practicum environment. Students should demonstrate an ability to monitor equipment alarms and signals. Students should also demonstrate an ability to complete online audiovisual presentations.
Visual	Visual ability sufficient for observation and assessment necessary in the laboratory/practicum environment.	Students should demonstrate an ability to observe their surroundings and what they are working on. Students should demonstrate an ability to monitor laboratory techniques involving reactions that generate visible results at different stages. Students should demonstrate an ability to complete reading assignments and watch audiovisual presentations.
Tactile	Tactile ability sufficient for the safe and effective operation of laboratory procedures and equipment.	Students should demonstrate an ability to feel what they are working on in situations where laboratory techniques require the tactile confirmation of results.

Distance-Accessible Course Standards:

Technical Skill	Standard	Examples of Necessary Activities to be Performed (not all inclusive)
Critical Thinking	Critical thinking ability sufficient for the application and synthesis of course concepts.	Students should be able to synthesize reading assignments and complete written course assignments. Students should also be able to identify problems and propose innovative solutions to those problems through applying principles learned in the course.

Interpersonal Behavior	Interpersonal abilities sufficient to interact with individuals and groups from diverse backgrounds.	Students should be able to effectively interact with classmates and course instructors on course related subjects and be able to work with other students on group projects.
Communication	Verbal communication abilities sufficient for interaction with others in oral and written form utilizing the English language.	Students should be able to effectively communicate with faculty and other students via e-mail and electronic threaded discussions.
Motor Skills	Physical abilities sufficient to use a computer and required software.	Students should demonstrate an ability to complete written assignments and examinations through the required computer systems.

II. Methods of Assessment

Methods of assessment of a student's ability to meet the program's academic and technical standards may vary from class to class and instructor to instructor. However, all students are graded equally based on their own work.

III. Acceptable levels of Performance

Specific knowledge, principles and concepts outlined in required courses should be mastered at a minimal level.

- A. All required Biomedical Science (BMD) courses outlined in the curriculum should be completed with a minimum grade of "C".
- B. Each course requires a minimum grade of 70% on examinations or graded products; including the exit examination given in the capstone experience course.

IV. Disability Support Services ("DSS") Statement

UAB is committed to providing equal opportunity to all students. All students admitted to the B.S. Biomedical Sciences program must be able to meet both the academic and the technical standards with or without accommodation(s). The B.S. in Biomedical Sciences Program in the Department of Clinical and Diagnostic Sciences will collaborate with students and UAB Disability Support Services to provide reasonable accommodations to otherwise qualified persons with disabilities. Reasonable accommodations are those that do not significantly alter the fundamental and essential requirements of the program and do not impose undue burden or hardship on UAB. It is the student's responsibility to make a request for a reasonable accommodation. The B.S. in Biomedical Sciences Program, along with UAB DSS, will engage in an interactive process with each student on an individualized basis in considering each student's request for accommodation.

Qualified students who wish to request an accommodation should contact the UAB DSS office at:

dss@uab.edu

(205) 934-4205 (Voice)

(205) 934-8170 (Fax)

Physical Address:

Hill Student Center

1400 University Boulevard

Suite 409

Birmingham ,AL