

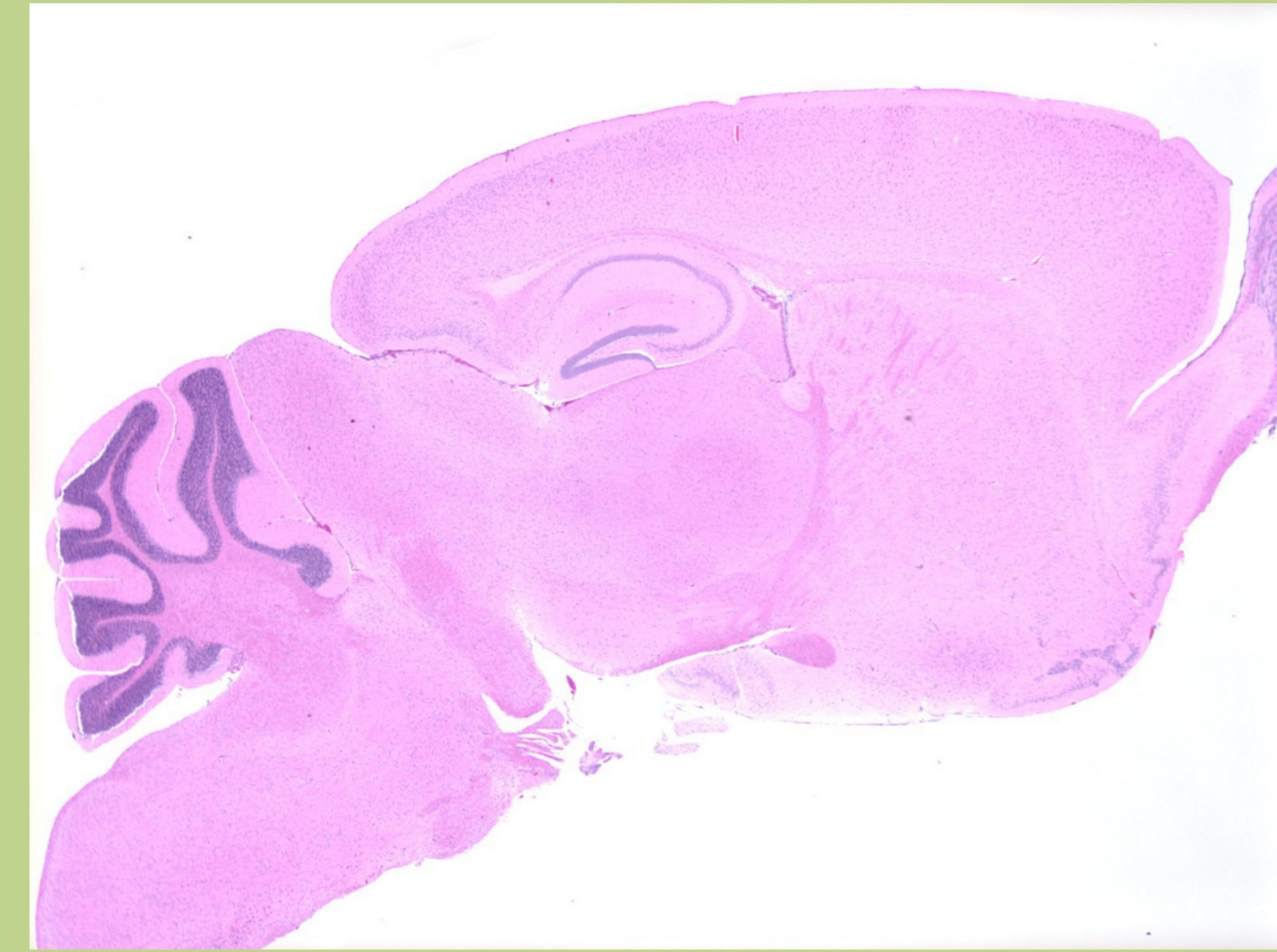
# Comparative Pathology Laboratory

Director: Jeremy B. Foote, DVM, PhD, DACVP

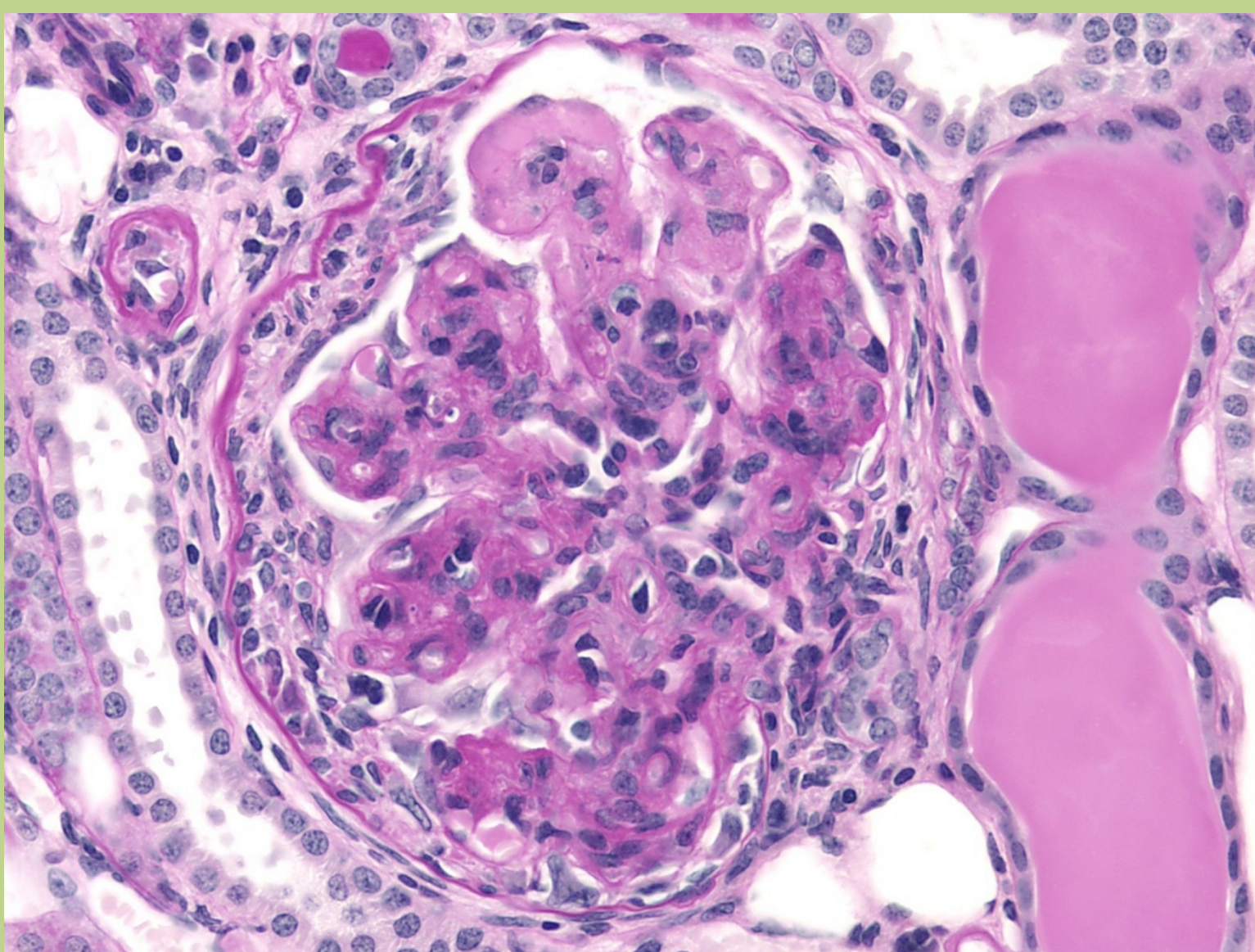
Staff: Emily Helman, MS; Marva Rasco, HT; George Tsuladze

## HISTOLOGY

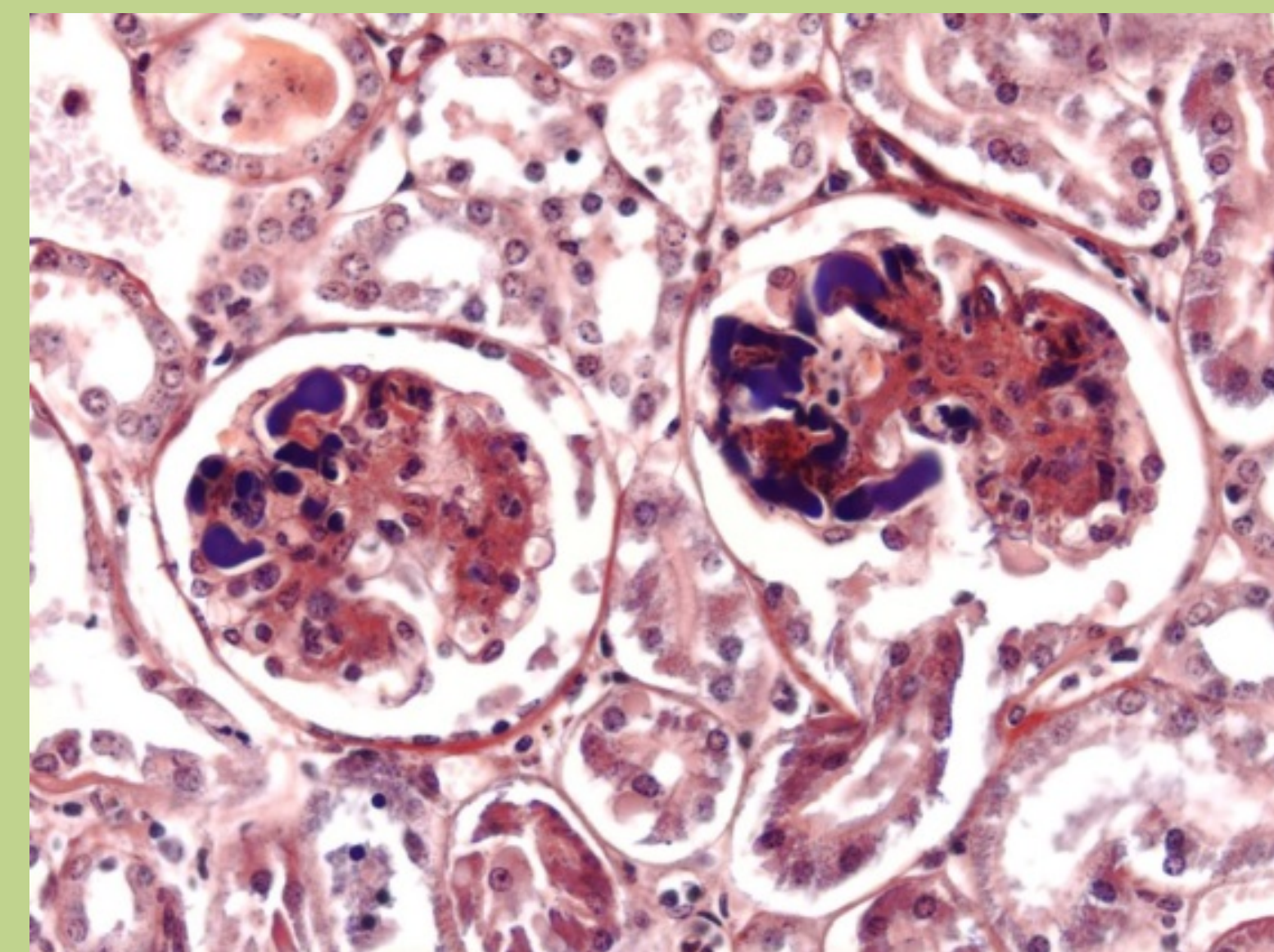
- Paraffin processing
- Routine and special stains
- Cryosectioning
- Training and consultation



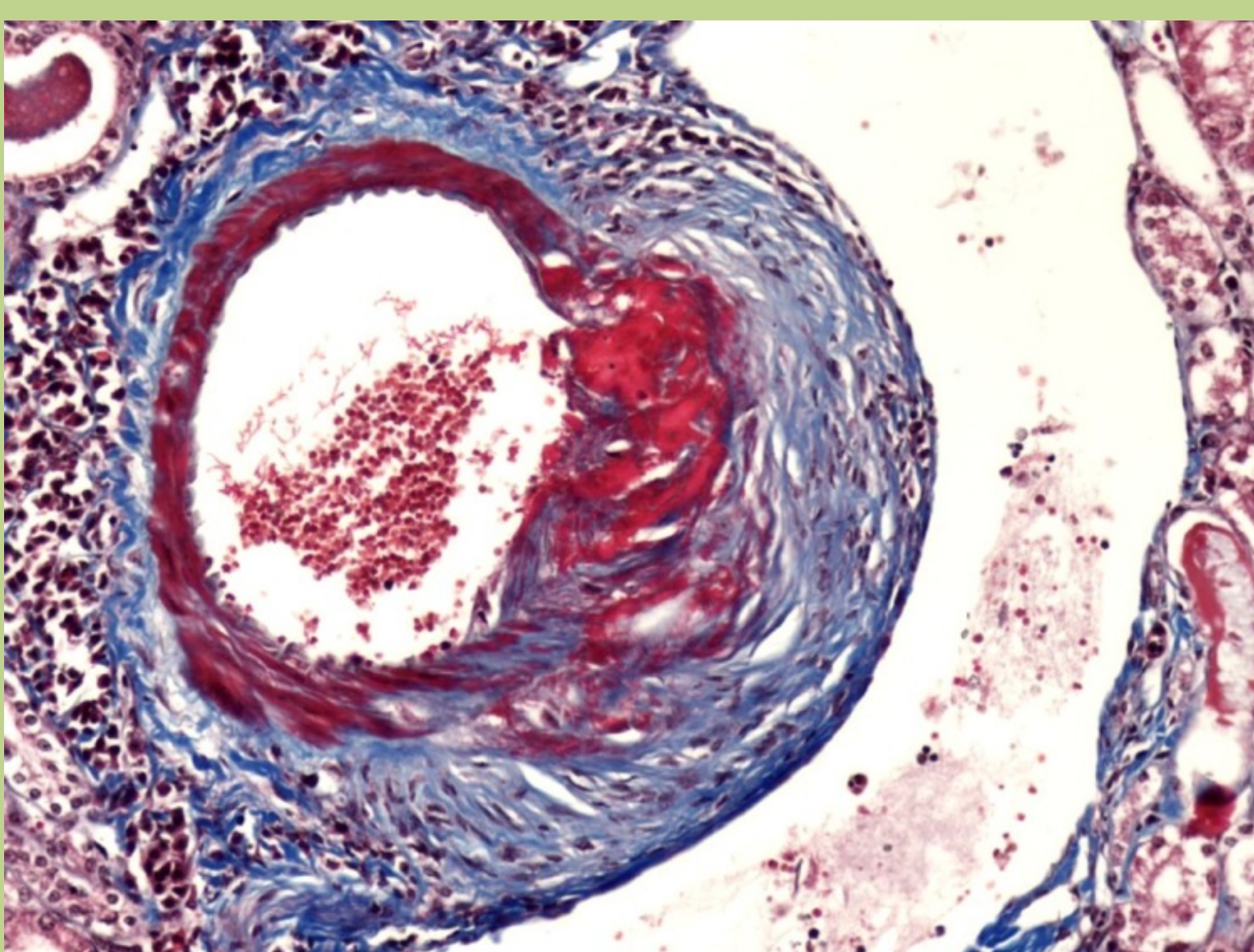
Hematoxylin and eosin (HE)



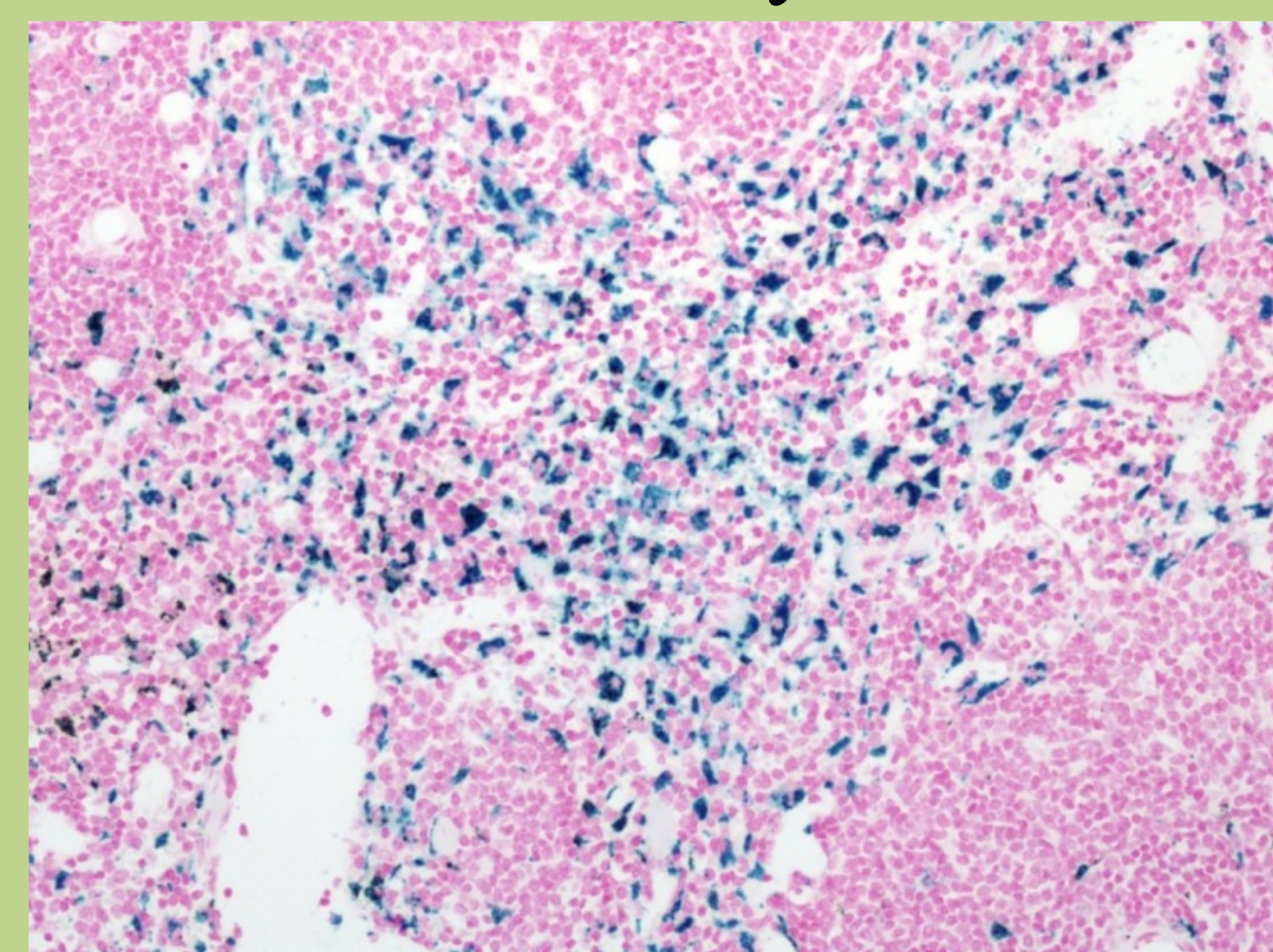
PAS-hematoxylin



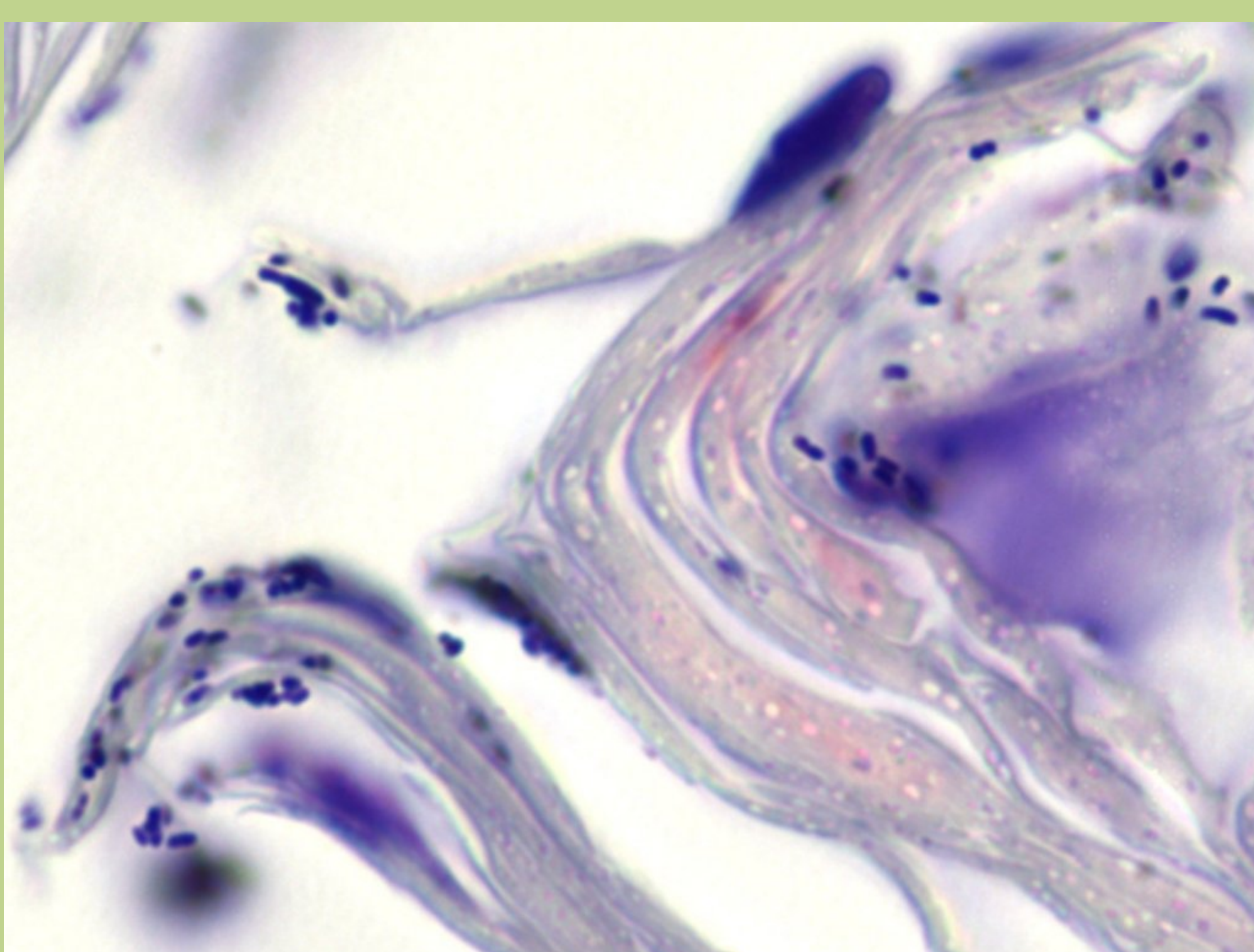
Phosphotungstic acid-hematoxylin



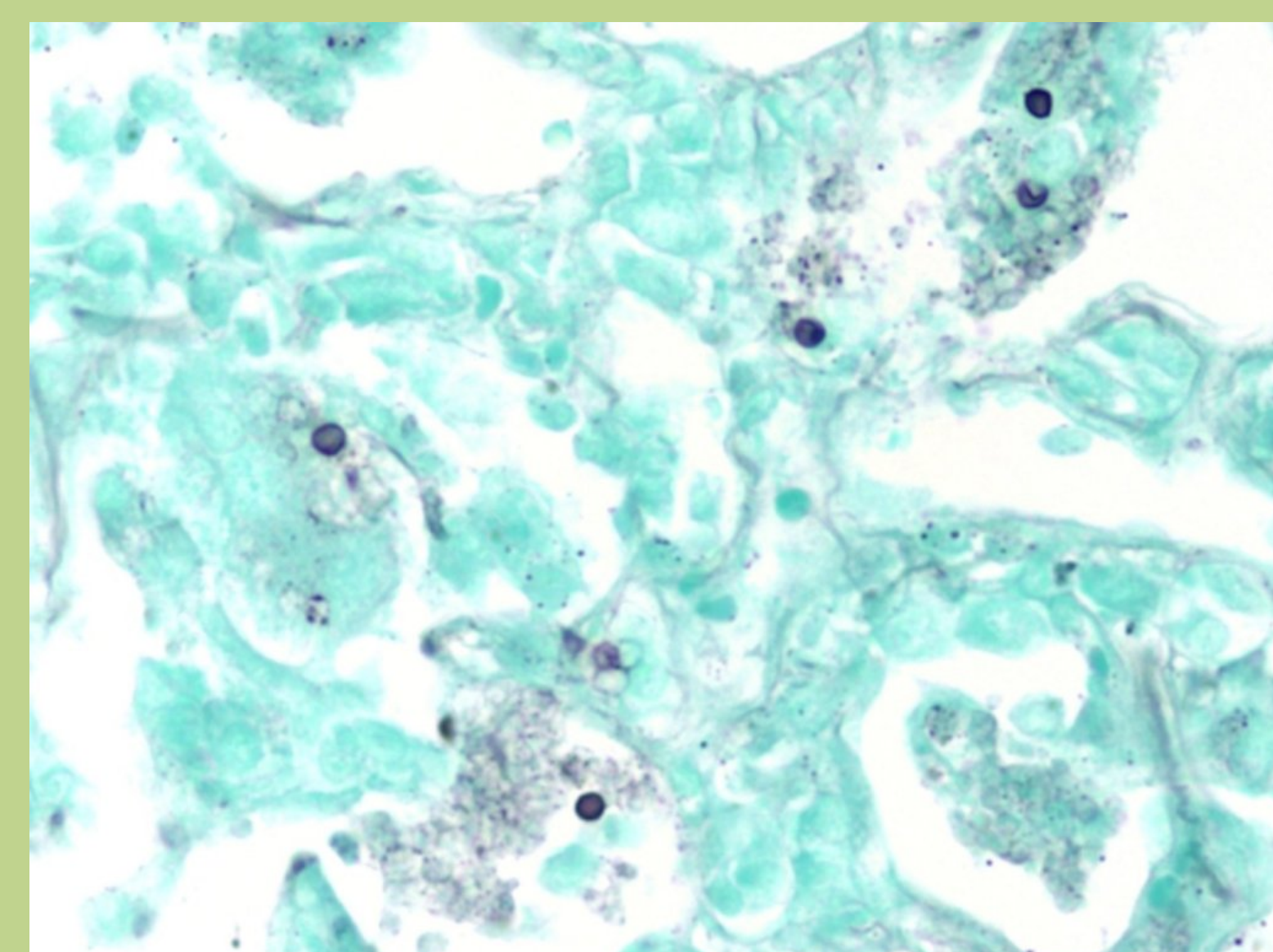
Masson trichrome



Prussian blue



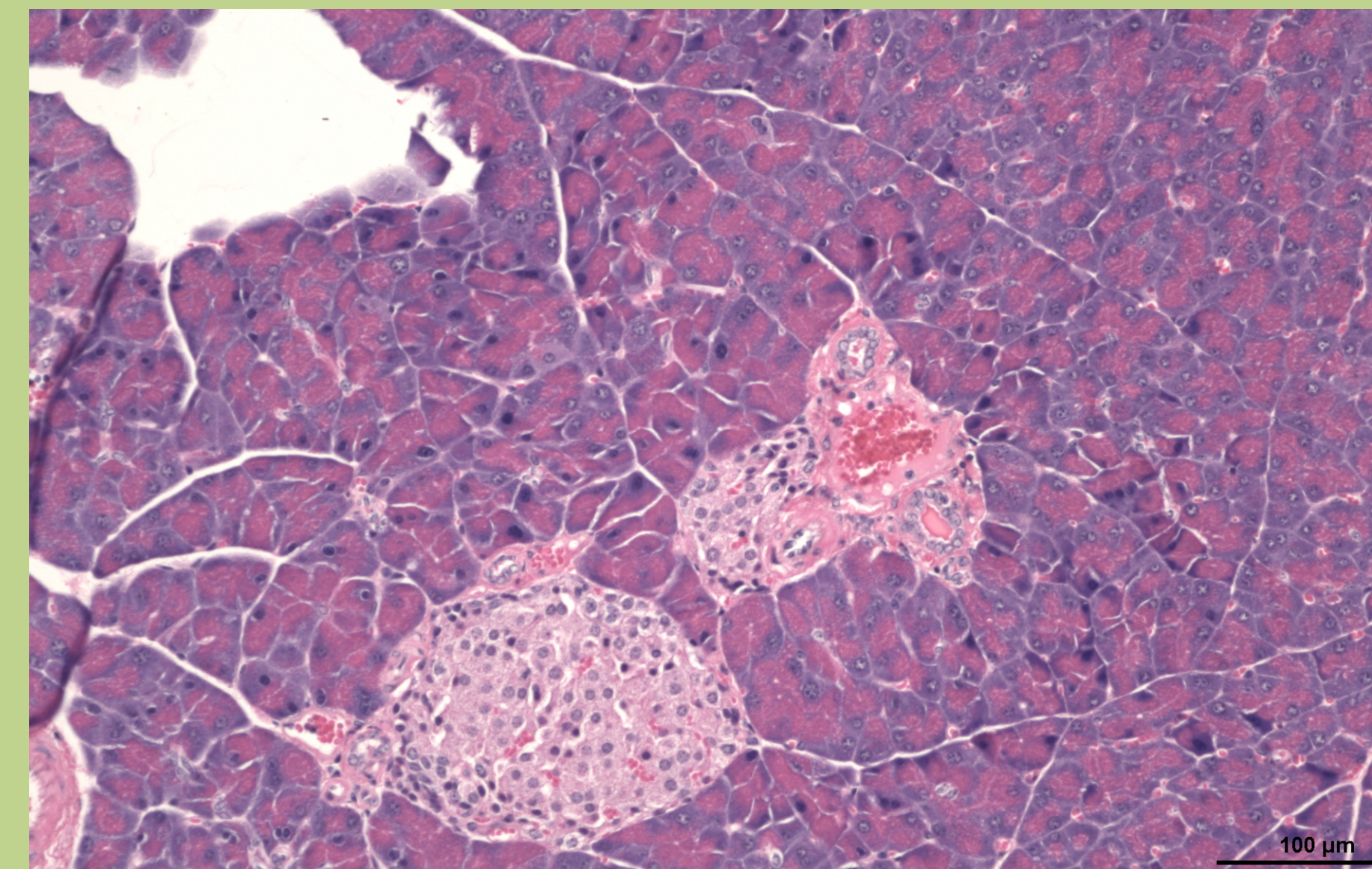
Twort tissue Gram



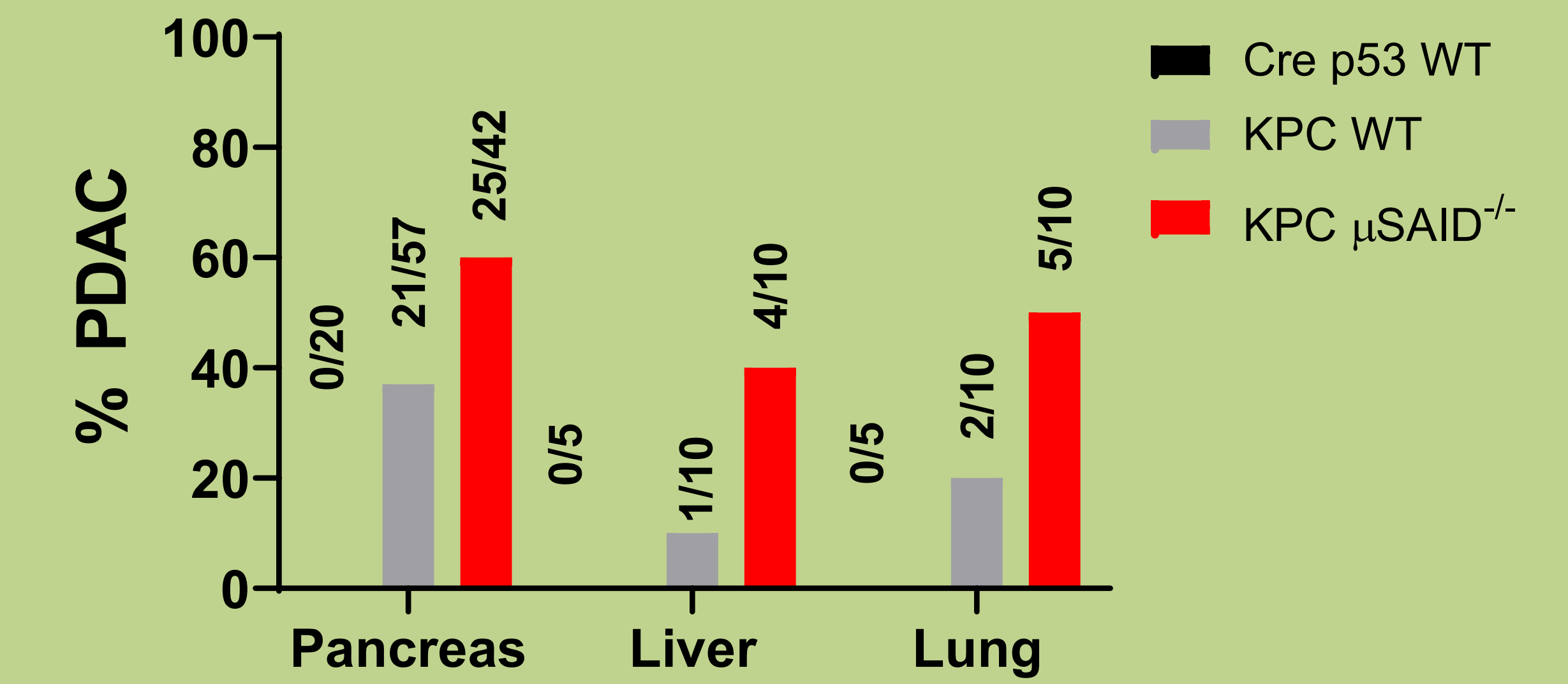
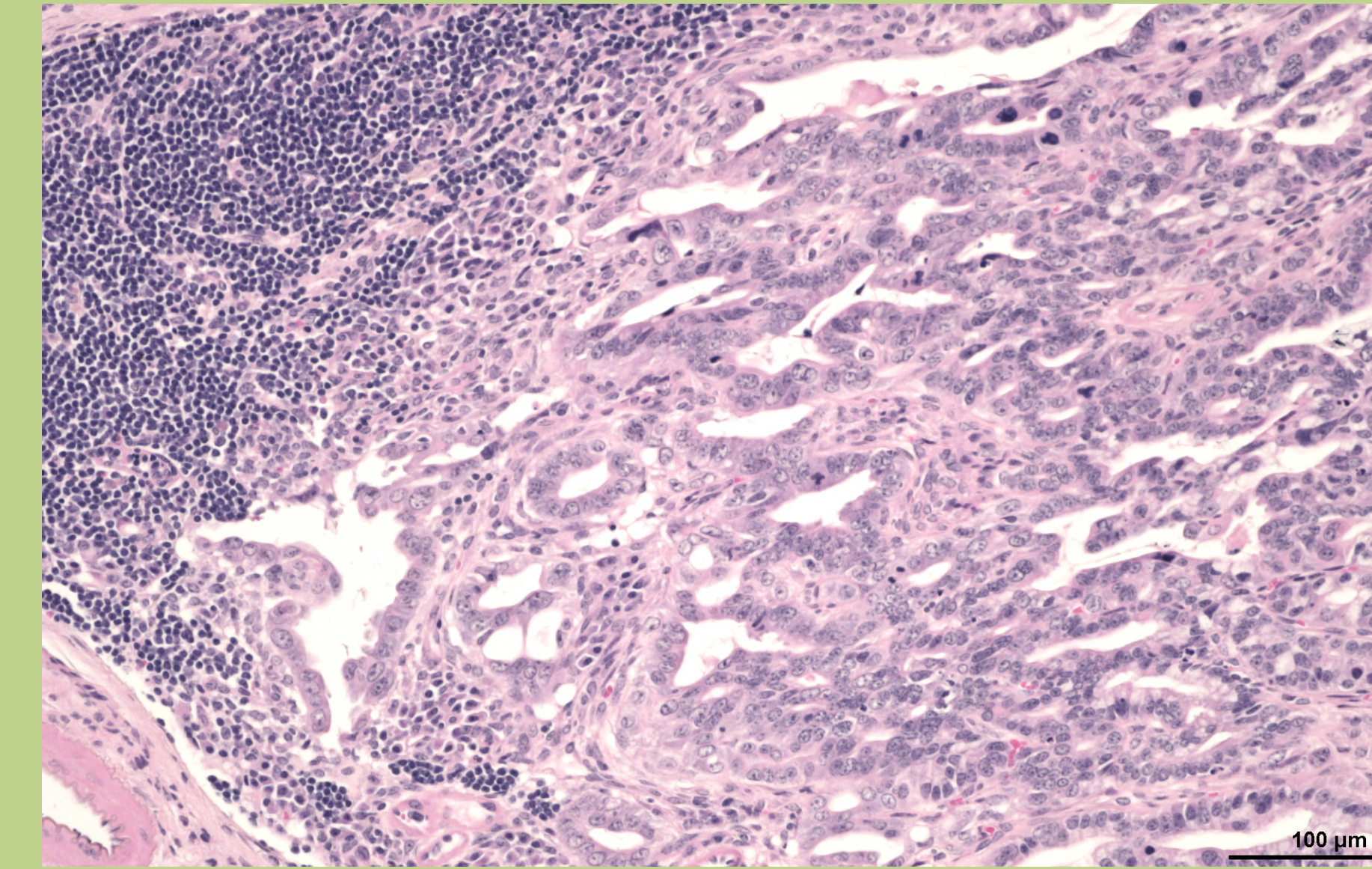
Gomori methenamine silver

## COLLABORATIVE RESEARCH

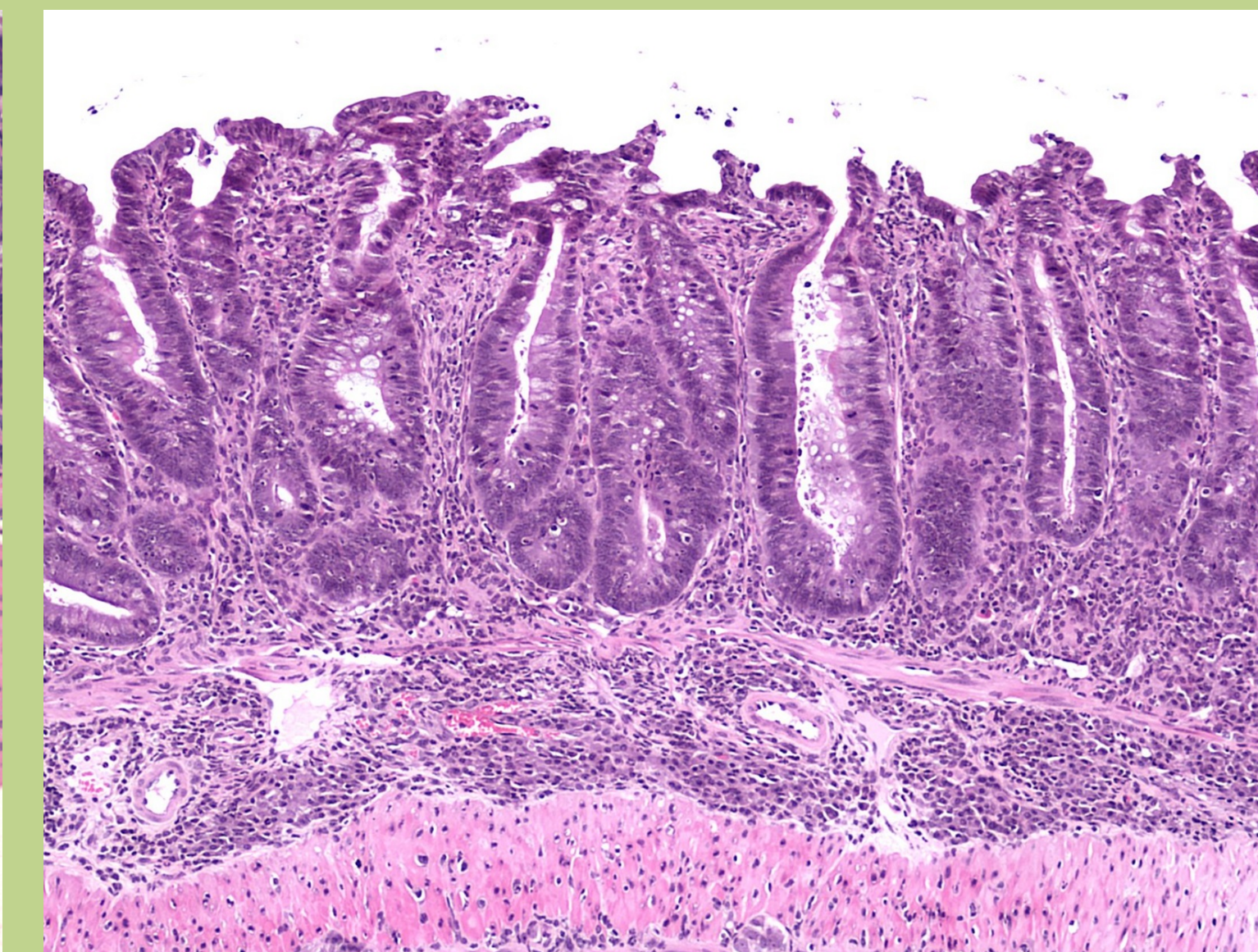
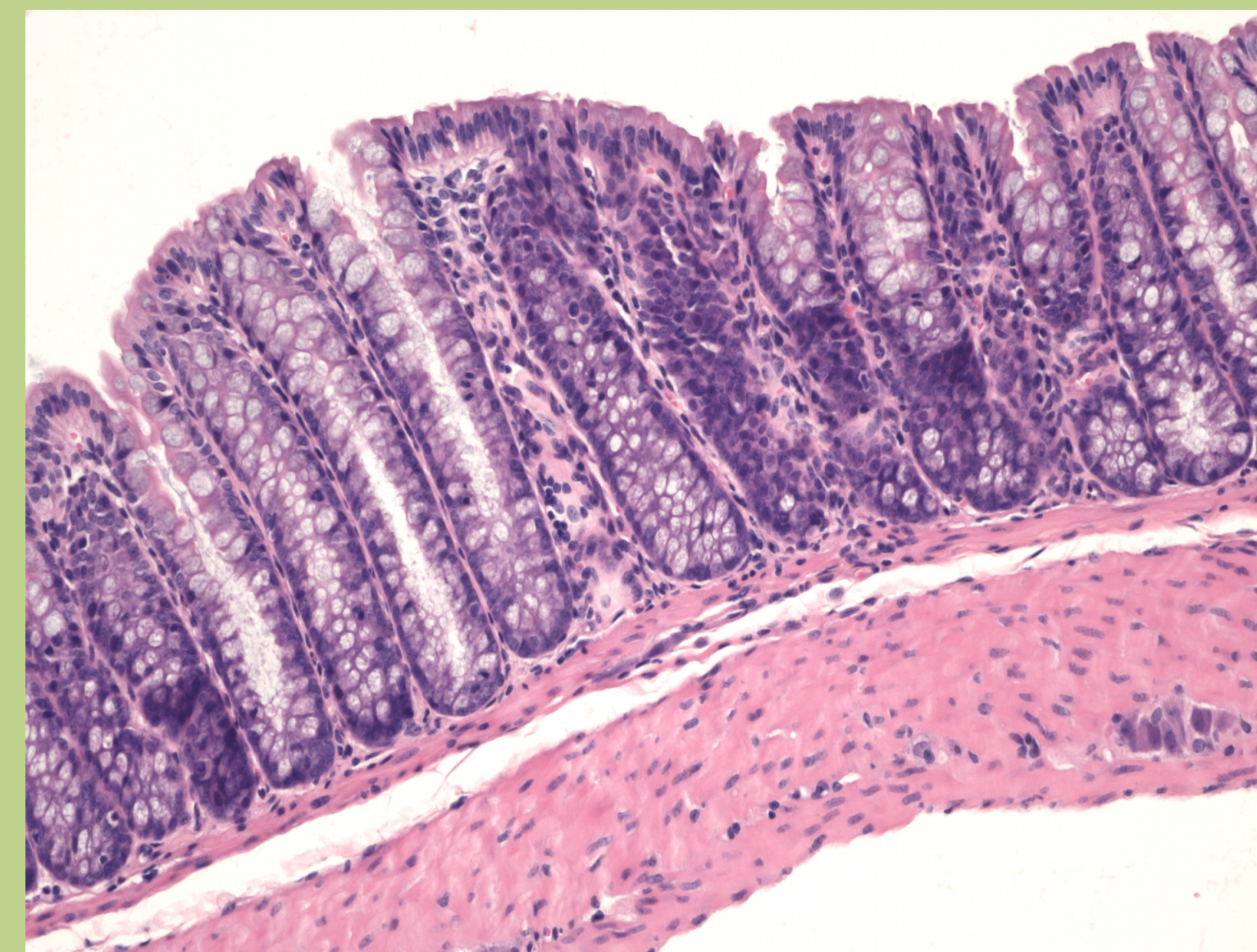
Pdx1-Cre p53 Control



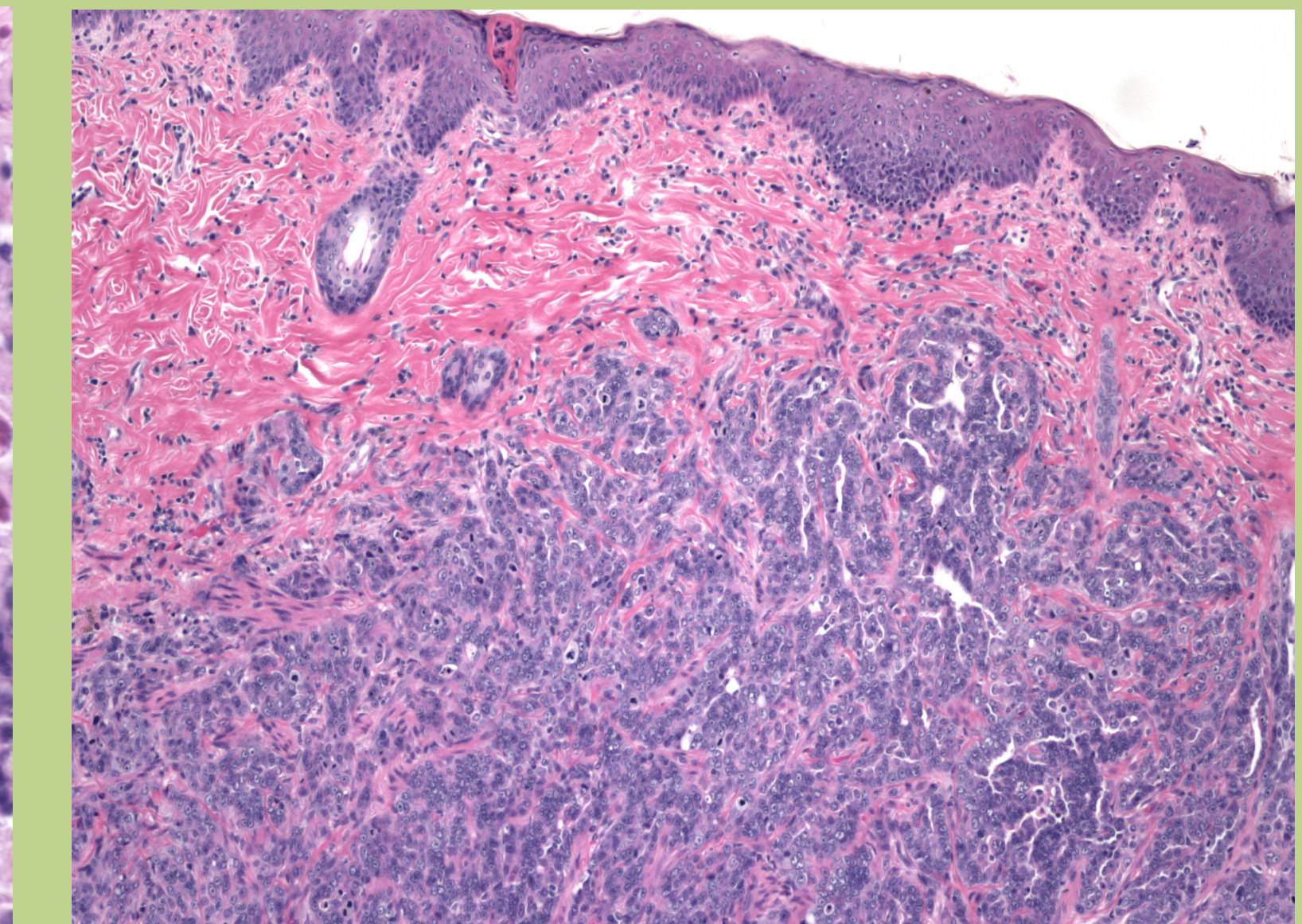
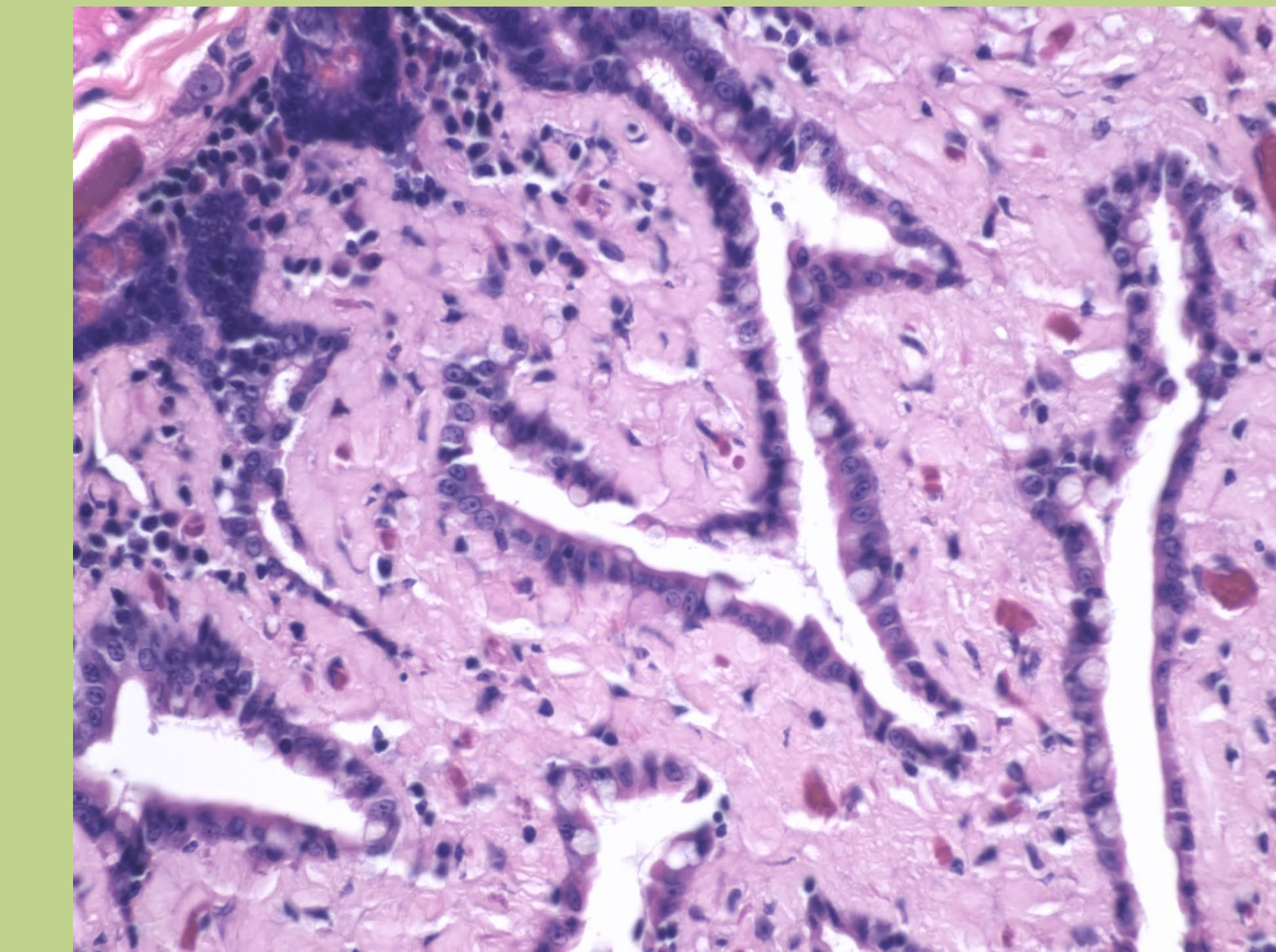
Pdx1-Cre;LSL-Kras<sup>G12D</sup>:LSL-Tp53<sup>FL/+</sup> (KPC)



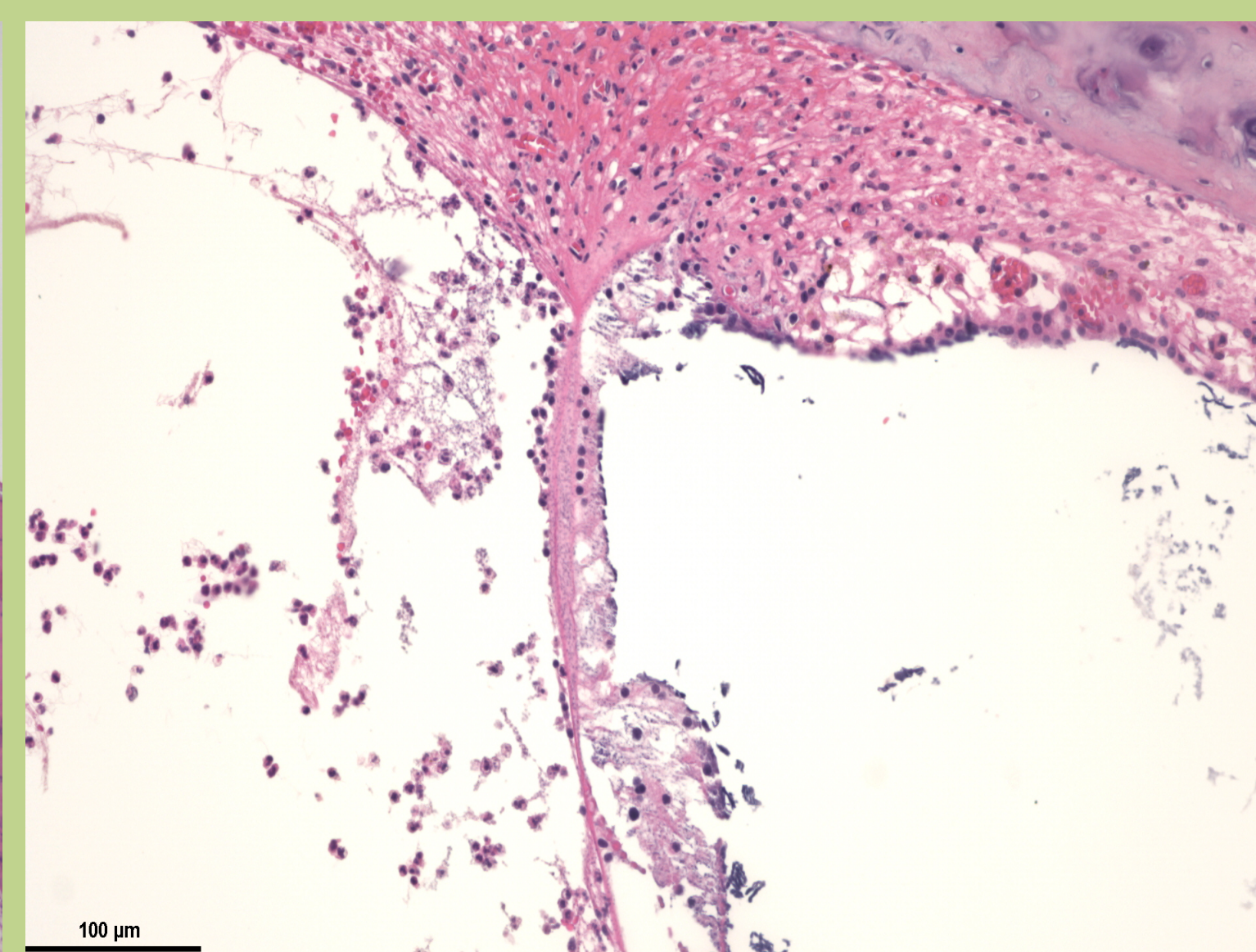
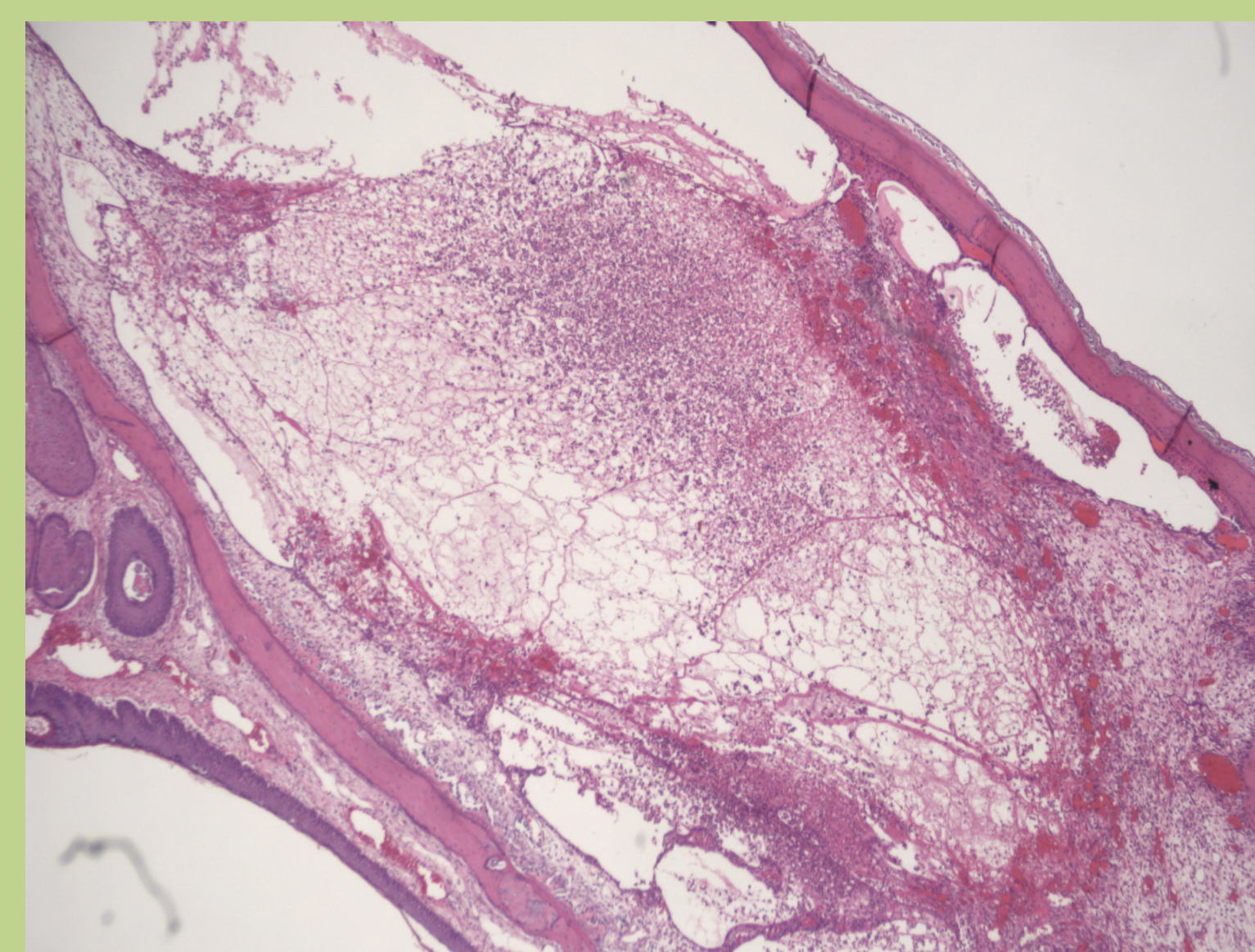
Evaluation of pancreatic tumorigenesis in mouse models of PDAC (Klug Lab)



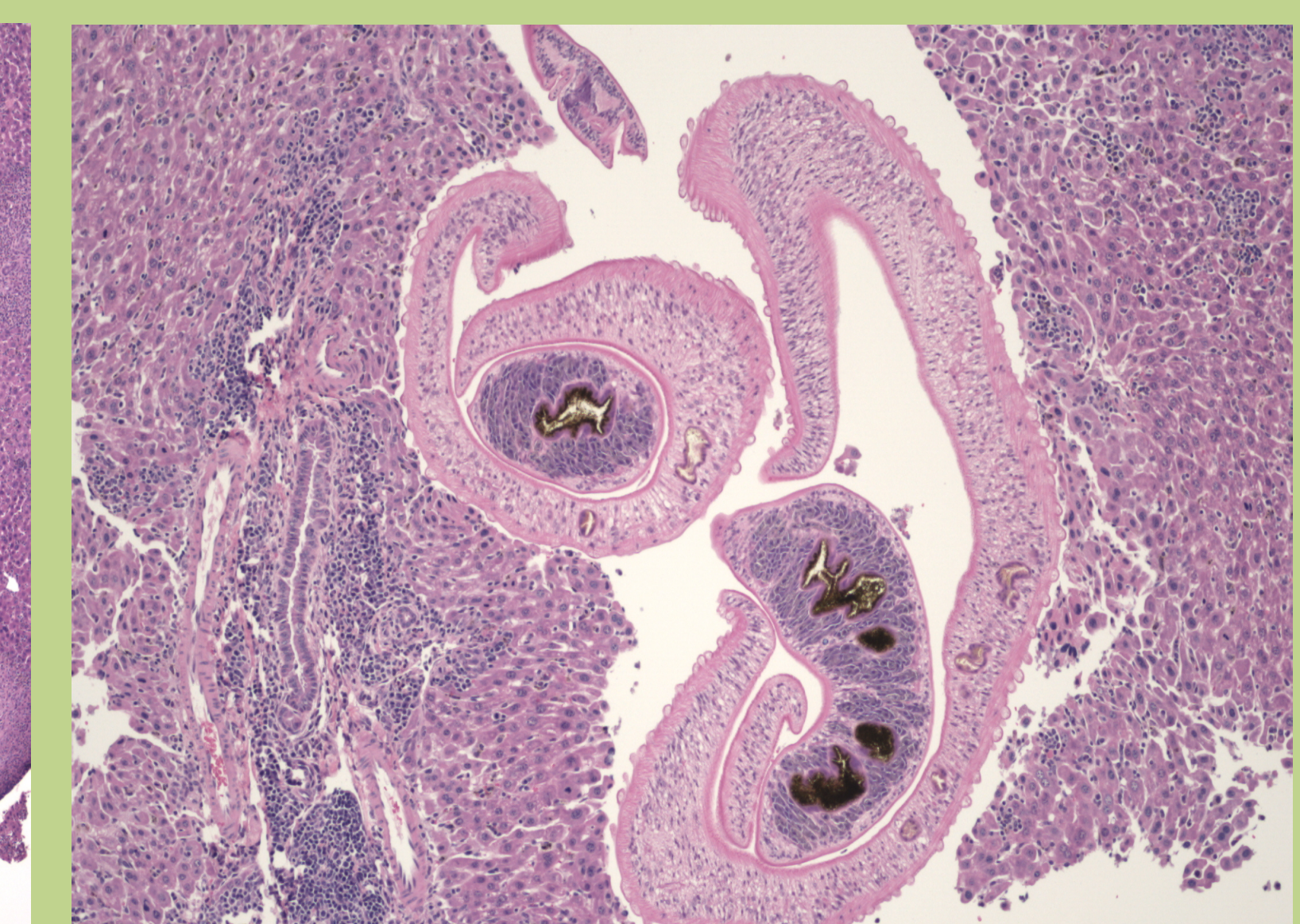
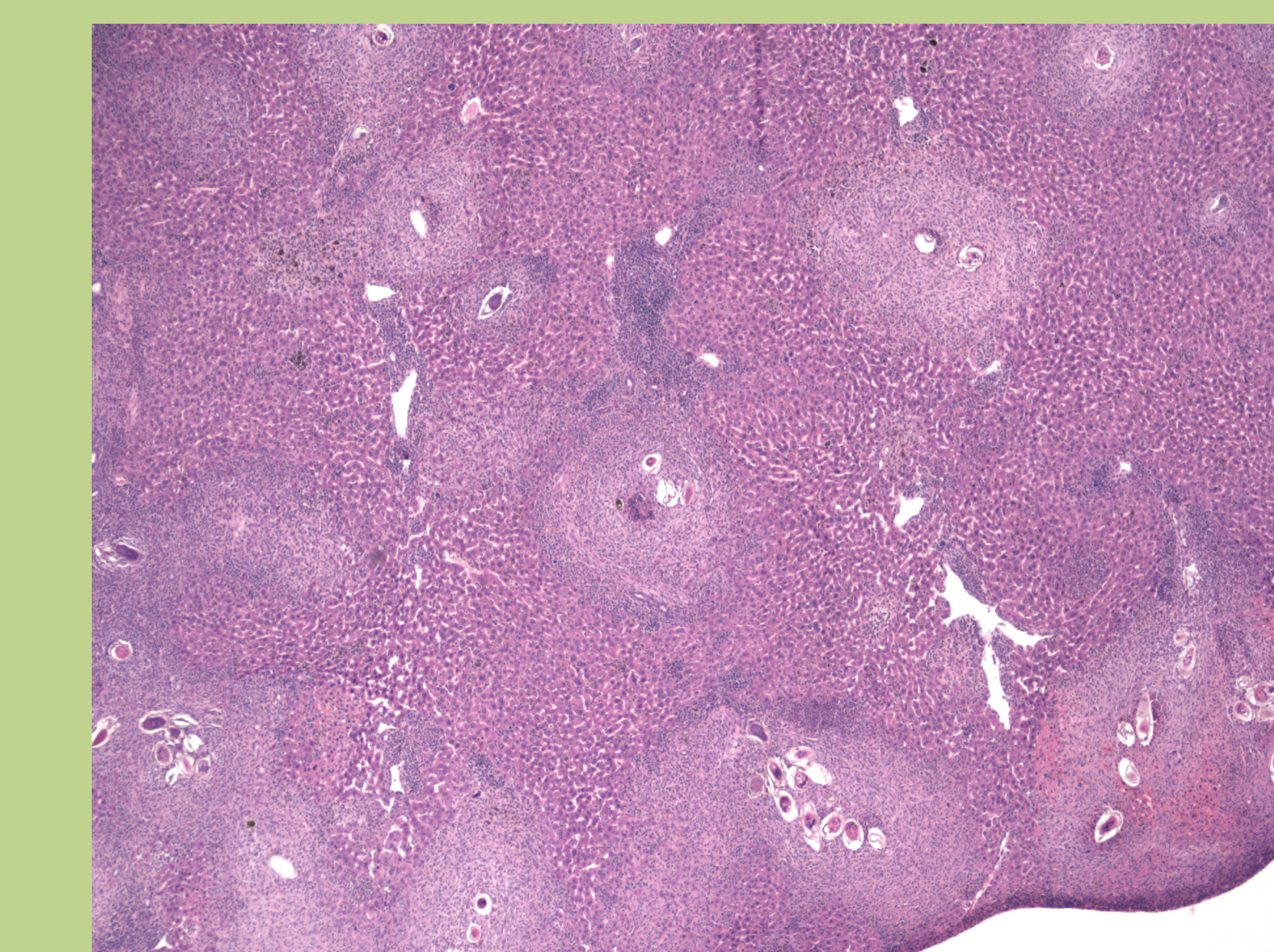
Semiquantitative analysis of colitis (Maynard and Harrington Labs)



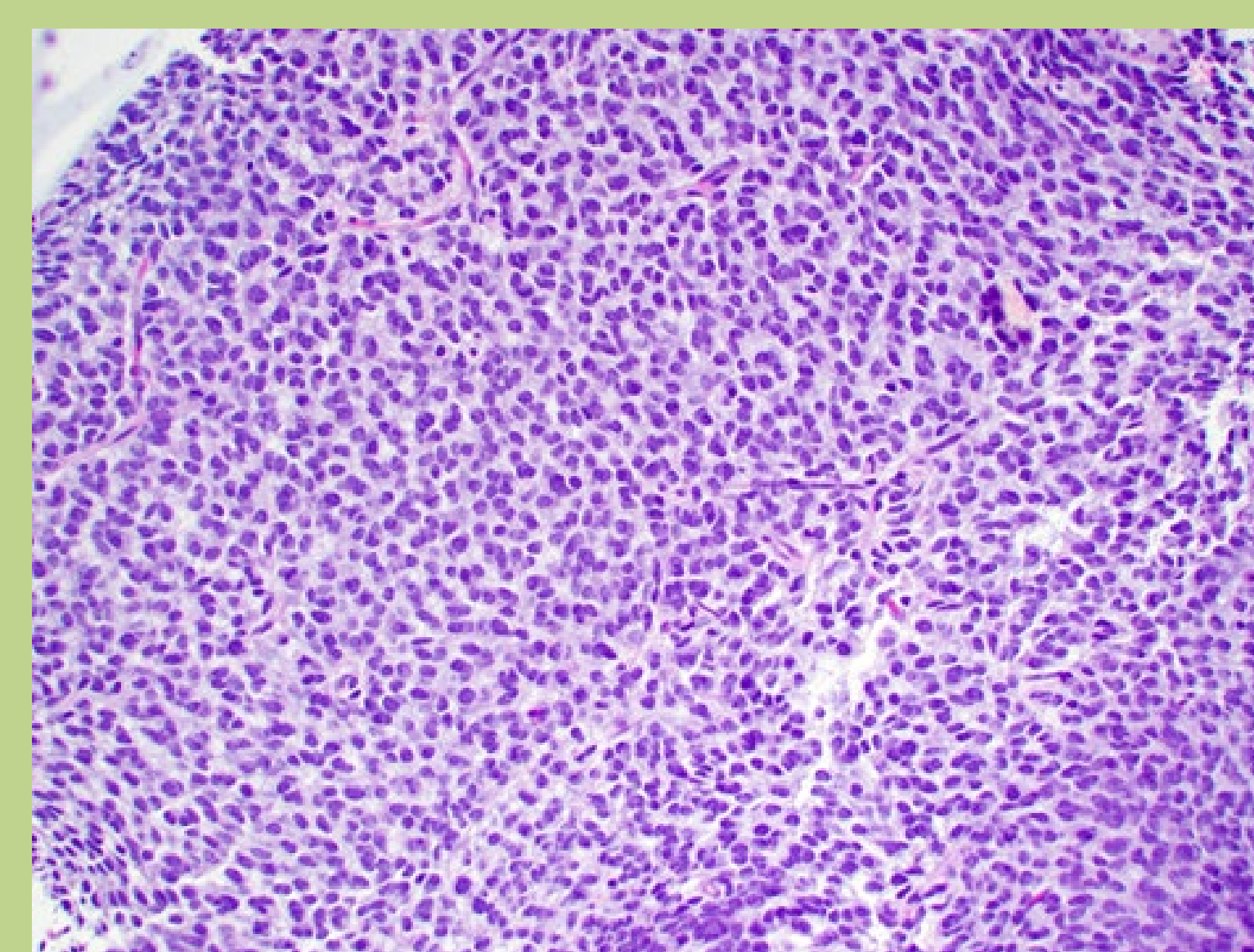
Pathologic lesions in aged tree shrew (Tree Shrew Core)



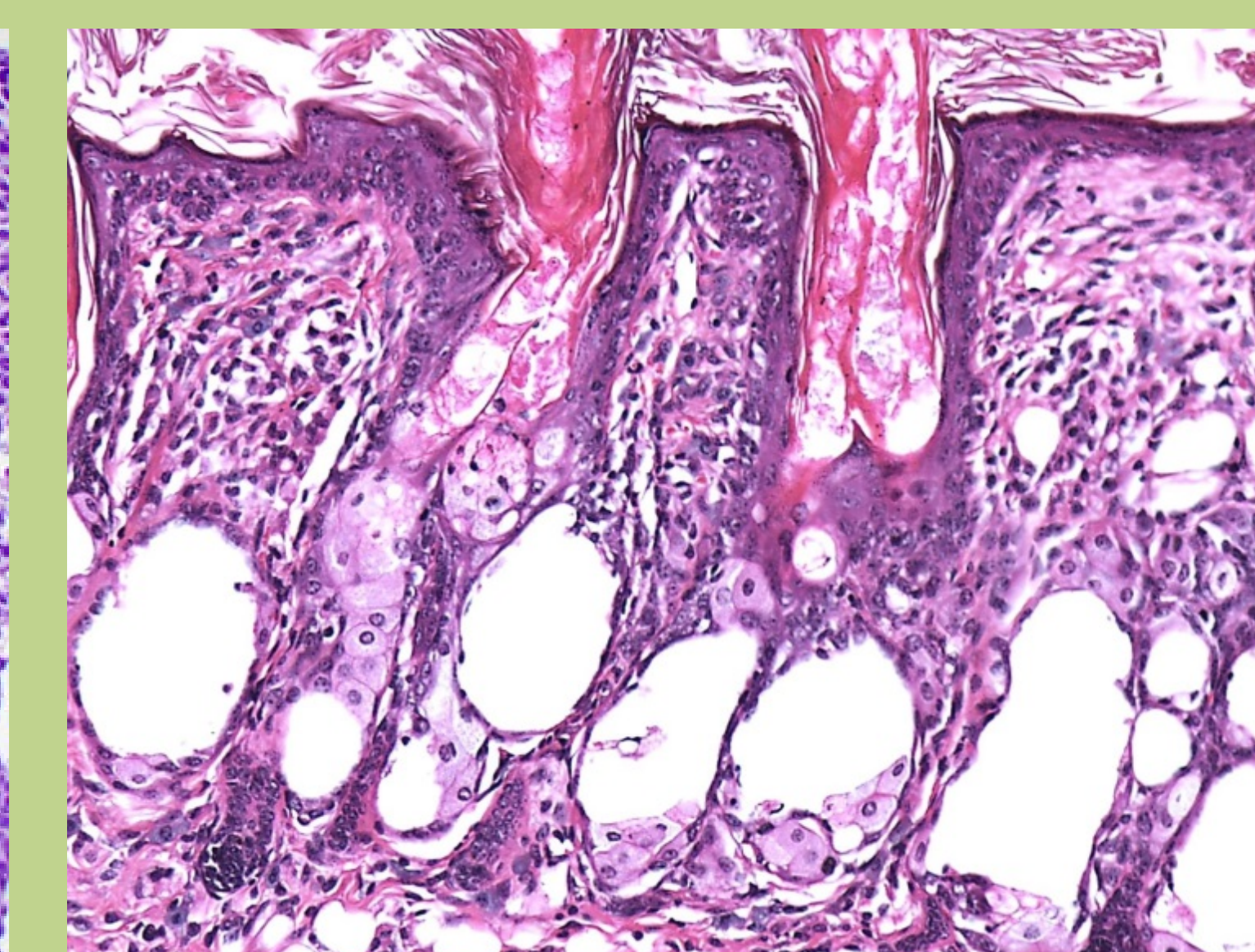
Chinchilla otitis media model (Swords lab)



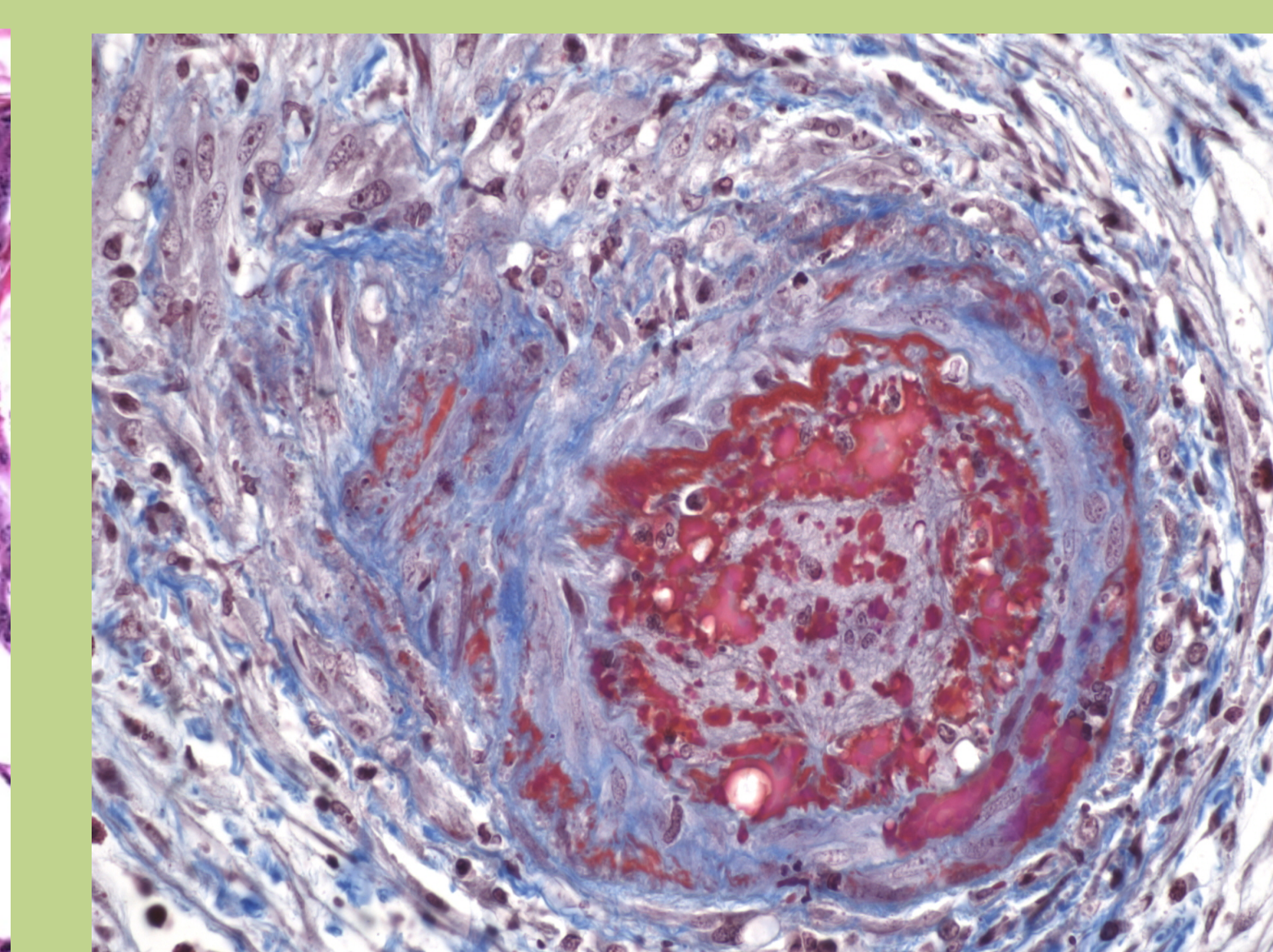
Model of Schistosoma mansoni infection (Lund lab)



Canine Oligodendroglioma (Chambers Lab)



Polymerase- $\gamma$  deficiency (Singh lab)



Porcine Xenotransplantation (Cooper Lab)

