

Metabolomics Analyses:

LC-MS Analyses (per sample)

(includes positive and negative mode evaluations, pooled samples, QC's, calibrations)

Sample Extractions (per specimen)

- Cells
- Plasma/Sera
- Stool
- Tissue
- Urine

Data Analyses

- Basic Stats Data Package (Optional-per comparison)
- Additional Data Analyses (per hour)

	UAB Investigator	Academic Investigator (off campus)	Non-academic entity (industry, organization, charity, etc.)
LC-MS Analyses (per sample)	\$255.00	\$268.00	\$319.00
Sample Extractions (per specimen)			
-Cells	\$43.00	\$45.00	\$53.00
-Plasma/Sera	\$82.00	\$86.00	\$103.00
-Stool	\$56.00	\$59.00	\$70.00
-Tissue	\$94.00	\$99.00	\$118.00
-Urine	\$43.00	\$45.00	\$53.00
Data Analyses			
-Basic Stats Data Package (Optional-per comparison)	\$1,645.00	\$1,728.00	\$2,057.00
-Additional Data Analyses (per hour)	\$110.00	\$116.00	\$137.00

Proteomics Analyses:

Protein Identification: SDS Gel Band (per sample)

(includes processing and enzymatic digestion, extraction and software identification)

Protein Post Translational Modification (per sample)

(includes processing and enzymatic digestion, extraction and software identification. Validation of modifications -data analyses 2hr minimum)

Protein Quantification (per sample)

(includes processing and enzymatic digestion, extraction and software integration)

Data Analyses

- Additional Data Analyses (per hour)



Amino Acid Panel Quantification (per sample)

-Sample processing, LC-MS and Integration
 -Standard Curve Preparation(one time fee)**

\$75.00	\$78.00	\$93.00
\$315.00	\$330.00	\$393.00

Bile Acid Panel Quantification (per sample)

-Sample processing, LC-MS and Integration
 -Standard Curve Preparation(one time fee)**

\$36.00	\$38.00	\$45.00
\$280.50	\$294.50	\$350.50

Nicotine/Cotinine Quantification (per sample)

-Sample processing, LC-MS and Integration
 -Standard Curve Preparation(one time fee)**

\$102.00	\$107.00	\$128.00
\$218.00	\$229.00	\$272.00

PGP/AcPGP Quantification (per sample)

-Sample processing, LC-MS and Integration
 -Standard Curve Preparation(one time fee)**

\$46.00	\$49.00	\$58.00
\$223.00	\$235.00	\$279.00

Short-chained Fatty Acid Quantification (per sample)

-Sample processing, LC-MS and Integration
 -Standard Curve Preparation(one time fee)**

\$99.00	\$104.00	\$123.00
\$255.00	\$267.00	\$318.00

Steroid Quantification (per sample)

-Sample processing, LC-MS and Integration
 -Standard Curve Preparation (one time fee)**

\$104.00	\$109.00	\$130.00
\$235.00	\$247.00	\$294.00

TCA Quantification (per sample)

-Sample processing, LC-MS and Integration
 -Standard Curve Preparation(one time fee)**

\$112.00	\$118.00	\$140.00
\$258.00	\$271.00	\$323.00

Tryptophan Metabolite Quantification (per sample)

-Sample processing, LC-MS and Integration
 -Standard Curve Preparation(one time fee)**

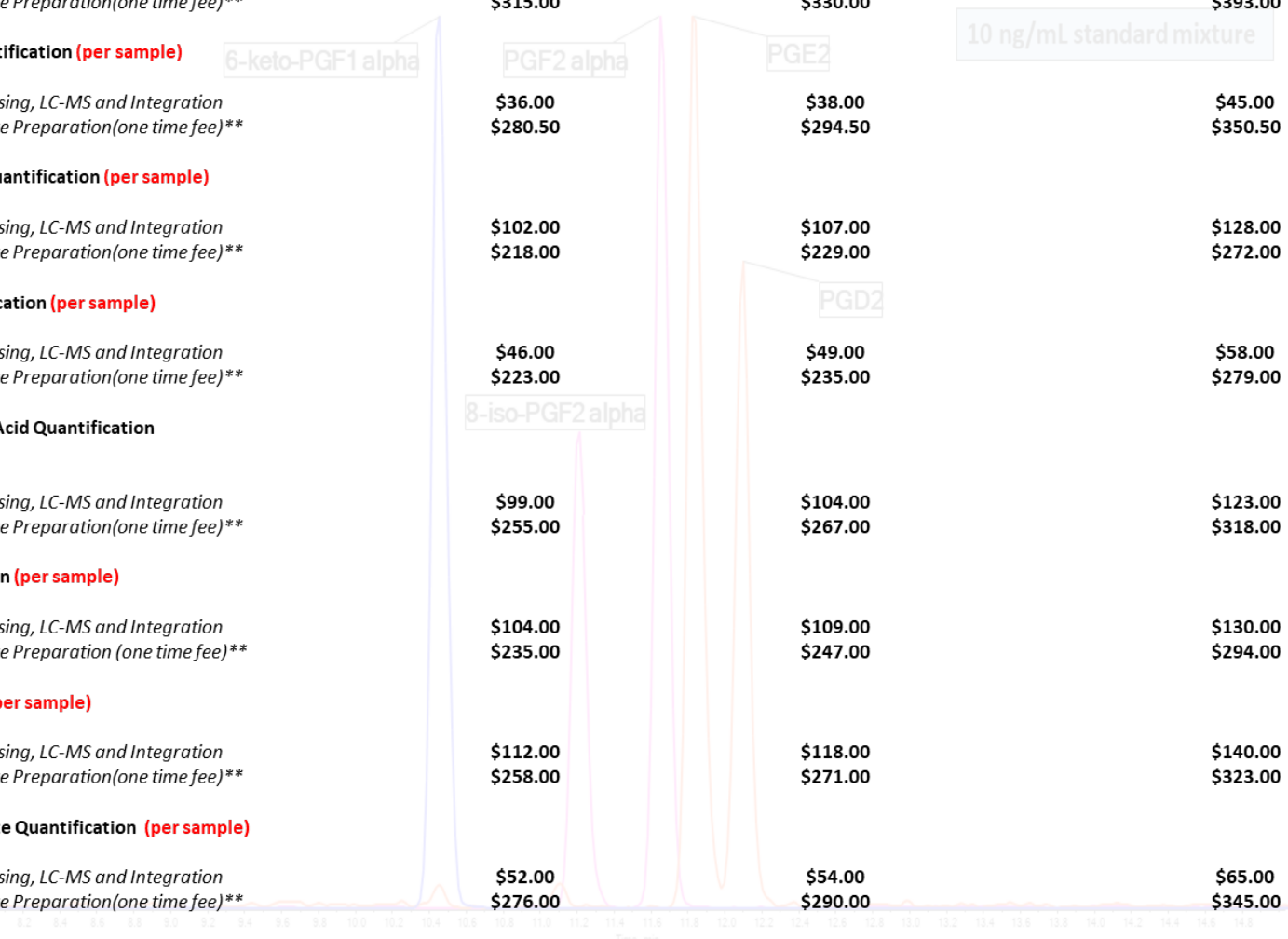
\$52.00	\$54.00	\$65.00
\$276.00	\$290.00	\$345.00

Data Analyses (per hour)

-Additional Data Analyses

\$110.00	\$116.00	\$137.00
----------	----------	----------

Denotes the expenses of producing standard curves for each targeted assay; one time fee per batch of samples



Consultations:

UAB Investigator

Academic Investigator (off campus)

Non-academic entity (industry, organization, charity, etc.)

Initial Project Consultation: (1 hour)

Free

Free

Free

Additional Consultations: (1 hour)

\$110.00

\$115.00

\$137.00

