

# Your Guide to the Benjamin Russell Hospital for Children



Children's  
of Alabama



The 12-story building exceeds 750,000 square feet, making it the largest single medical facility expansion project in the history of Alabama.

Bed licensing increased from 275 to 332, plus 48 NICU bassinets (six additional bassinets).

The new building, equipment and furnishings cost approximately \$400 million. The building was financed through tax-exempt bonds (\$235 million) and philanthropy (\$110 million), with the remainder from cash out of hospital operations.



The Benjamin Russell Hospital for Children was named to honor legendary entrepreneur Benjamin Russell (1876-1941) and to recognize the \$25 million gift made by his grandson Ben and Ben's wife, Luanne, both long-time supporters of the hospital.

## Facts about the Benjamin Russell Hospital for Children

The expansion makes us the third largest pediatric hospital in the United States, behind Cincinnati Children's and Children's Hospital of Pittsburgh.

For the first time, we have shell space for future use (located on the 11th and 12th floors). We also have space allotted for four more rooms in the Emergency Department, four additional general surgery rooms and one more cardiovascular surgery room.

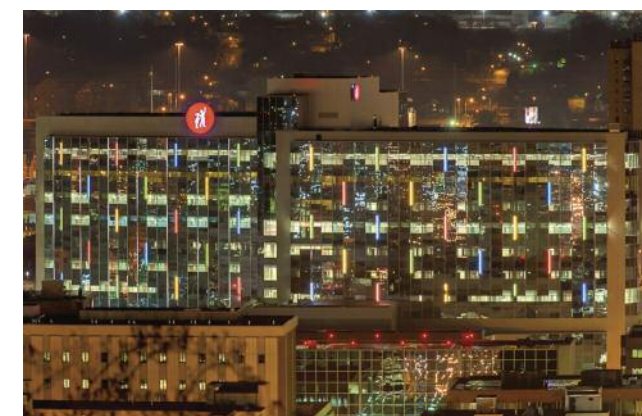
The new helipad is large enough for "Black Hawk" helicopters – the kind used by the National Guard during disasters. Some hospitals were unable to accommodate the Black Hawk during Hurricane Katrina rescue efforts.



The operating budget for the new facility is approximately \$2 million a day. The operating budget prior to the expansion was \$1.3 million a day.

The next big project for Children's after the Benjamin Russell Hospital for Children is the "adaptive re-use" of the existing facility.

We now have 17 state-of-the-art operating rooms – five more than before the expansion. We also have two cardiovascular surgery rooms – the first in Children's 100+ year history.



## Amazing as their potential



## Family-Centered Care

### Rooms

- All rooms are of the same size and configuration
- All private rooms (including PICU, Special Care, CICU and NICU)
- All have patient zone, family zone and staff zone
- Family zone features a sleeper sofa, large wardrobe and small safe for valuables
- Patient education/entertainment system
- Acute care and critical care rooms – spacious room with bathroom
- NICU – spacious room with shower facilities on floor
- Rooming-in accommodations give parents of newborns the opportunity to practice at-home care routines before discharge

### Every Patient Floor

- A family kitchen with refrigerator and microwave
- Laundry room
- Subwaiting areas with natural light
- Consult rooms for private conversations outside of the patient room
- GetWell Network, a state-of-the-art, integrated patient education delivery system

## Going Green

Where possible, local materials were used in the construction of the new facility to reduce gas and transportation costs.

Two roofs are "green" and feature native plants (see photo at right). This is more visually appealing and also better for the environment. A third "High Albedo" roof has a white coating that reduces heat gain from the sun, thereby lowering the energy cost to cool our building.

Located throughout the campus are 140 bicycle racks.

A designated green space is located on 17th Street between 5th and 6th Avenues for the enjoyment of our patients, families and staff.

The new facility faces due north, which means the sun will never directly hit the windows on the broad side of the building. This is yet another example of our energy-efficient design.

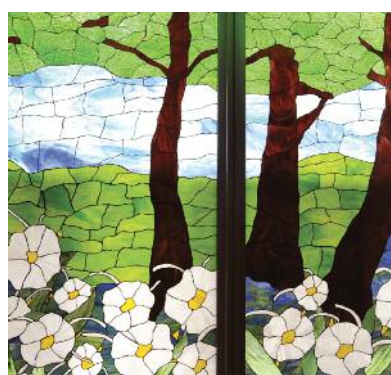
Also located on the Russell Campus is our new Central Energy Plant, where we collect 30,000 gallons of water daily from air conditioning vents. The water is used to help water plants and cool equipment.

## LEED Initiatives

The Leadership in Energy and Environmental Design (LEED) is a third-party certification program for the design, construction and operation of sustainable, energy-efficient and environmentally responsible building projects.

The US Green Building Council administers LEED certification and evaluates projects according to established and nationally accepted criteria for building performance in five key areas: sustainable site development, water savings, energy efficiency, materials selection and indoor environmental quality.

The Children's of Alabama expansion is expected to become Alabama's first LEED-certified hospital building under LEED version 2.2 for New Construction and the largest LEED-certified project in the state to date, largely underwritten by a portion of the McWane, Inc. and the McWane Foundation capital campaign gift.



RESILIENCE  
Stained Glass by Mary Aiken



## About the Art

Approximately 120 works by Alabama artists are featured throughout the new facility. "Resilience," a stained glass work by Children's of Alabama employee Mary Aiken, is located on Main Street in the Meditation Room.

Mary's inspiration for the piece came from the "river" that is used to assist with wayfinding in the hospital's public passageways. In her work, Mary incorporates the Cahaba River and the Cahaba lily.

"The Cahaba River flows through Birmingham, providing a nurturing environment to a wide variety of unique plants and wildlife – similar to our diverse and multi-cultural blend of patients and families," Mary says. "And, also like our patients, the Cahaba lily requires a very specialized habitat. These beautiful lilies start their lifecycle in a rocky riverbed. In spite of this difficult beginning, they push through the rocky areas and bloom into fantastic, perfect flowers."

## Technology unsurpassed in the nation

The Benjamin Russell Hospital for Children enables Children's of Alabama to deliver new and enhanced services to very ill children and their families.

Among the most exciting features of the new facility are its 16 state-of-the-art operating suites equipped with cutting-edge technology – including a "hybrid" operating room (OR) that is a cross between an OR and a cardiac catheterization lab (used for diagnosis and treatment of heart problems). The Hybrid OR is one of the most technologically advanced rooms in the hospital.

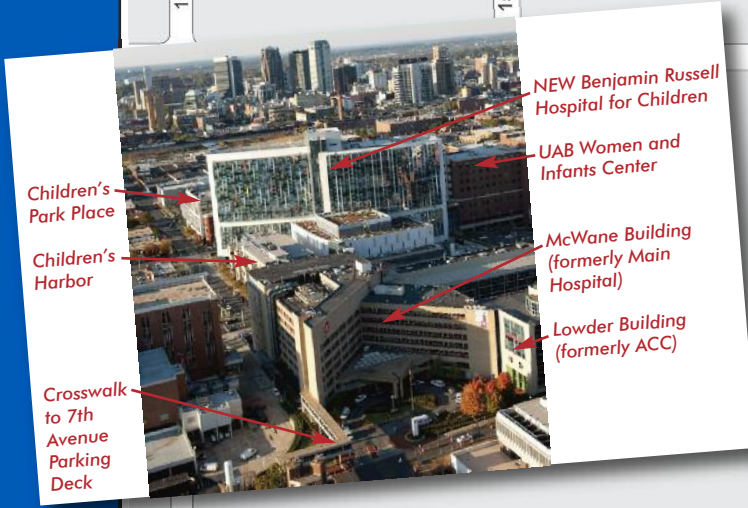


The Colonel Harland Sanders neonatal intensive care unit (NICU), located on the new facility's sixth floor, is comprised of 48 neonatal bassinets. Previously, Children's NICU was arranged in a ward-type design with limited privacy and visiting hours. Now, each bassinet is in a private room with enough space for both parents to comfortably remain with their baby around-the-clock. Services include neonatal surgery and extracorporeal membrane oxygenation (ECMO).

When the Children's of Alabama Pediatric Transplant Program becomes fully operational, children who need heart transplant surgery or a new kidney or liver will be able to receive high-tech, sophisticated pre-op, surgery, post-op and rehabilitative care all on one campus.







Children's  
of Alabama

## Russell Campus

### Benjamin Russell Hospital for Children

Admitting/Cashier (2nd Floor/Main Street)  
**Bruno Pediatric Heart Center** (4th Floor)  
 Cath Labs  
 Critical Care Patient Beds  
 Interventional Radiology Lab  
 Operating Rooms  
 Pre-Op/PACU  
 Emergency Department (1st Floor)  
 Enteral Feeding Lab (2nd Floor)  
 Gift Shop (2nd Floor/Main Street)

### Harbert Tower

Critical Care Patient Beds (6th & 7th Floors)  
 Helipad (14th Floor)  
 Med/Surg Patient Beds (8th-10th Floors)  
 Imaging (1st Floor)  
 Laboratory/Pathology (2nd Floor)  
 Main Street Deli (2nd Floor/Main Street)  
 Meditation Space (2nd Floor/Main Street)  
 Patient Education Center (2nd Floor/Main Street)  
 Patient Relations (2nd Floor/Main Street)  
 Patient Theater (2nd Floor/Main Street)  
 Performance Stage (2nd Floor/Main Street)  
 Pharmacy (2nd Floor)

### Quarterback Club Tower

Critical Care Patient Beds (6th & 7th Floors)  
 Med/Surg Patient Beds (8th-10th Floors)  
 Respiratory Therapy (6th Floor)

### Russell Surgery Center

Operating Rooms  
 Pre-Op/PACU  
 Sterile Processing (4th Floor)

### McWane Building (Formerly Main Hospital)

Biomed (Ground Floor)  
 Cafeteria (1st Floor)  
 Central Supply (Ground Floor)  
 Chapel (1st Floor)

### Dearth Tower (5th-7th Floors)

Med/Surg Patient beds  
 Imaging (Outpatient) (2nd Floor)  
 Lactation Center (Ground Floor)  
 Maintenance/Engineering (Ground Floor)  
 Medical Staff Library (1st Floor)  
 Medical Staff Services (1st Floor)

### Outpatient Clinics

Clinics 1-10 (1st Floor)  
 Clinic 11 (2nd Floor/Main Street)  
 Referred Testing (2nd Floor/Main Street)  
 Residents' Lounge (4th Floor)

### Lower Building (Formerly ACC)

Cafe Origins (1st Floor)  
 COA Administration (6th Floor)

### Lower Surgery Center

(2nd Floor/Main Street)  
 APASS  
 Operating Rooms  
 Pre-Op/PACU

### Outpatient Clinics

Children's Behavioral Health (5th Floor)  
 Sports Medicine (4th Floor)  
 Physician Offices (3rd-6th Floors)  
 UAB Pediatrics Administration (6th Floor)

\* This listing represents only the three primary buildings on the Children's of Alabama Russell Campus and the primary services in each building.



## Wayfinding at the Benjamin Russell Hospital for Children

We use colors, numbers and graphics to help with wayfinding. Each floor is associated with a color, number and special theme on the elevators and signage. The 7th floor in the Quarterback Tower, for example, has a football theme, the color is green and the number is 7.



Our new Emergency Department is larger and more operationally efficient. We have 48 exam rooms (up from 35), four trauma bays (previously we had two) and one minor procedure room. As for efficiency: The ambulance entrance, CT Scan area, elevators from helipad and trauma rooms are very close to each other — and this can make all the difference in a trauma situation where every second counts.



The babies who come to Children's with life-threatening illnesses or congenital abnormalities are transported from their birthing hospitals to be treated by a multidisciplinary team of doctors who specialize in advanced, life-saving neonatal care. We now have 48 NICU bassinets — six more than pre-expansion.

The main corridor of the expanded hospital is the second floor, called "Main Street." From that floor patients and visitors can reach the existing hospital building, which houses patient rooms and offices. A wavy blue "river" runs through the public areas of the new facility to assist with wayfinding. The river sparkles thanks to the use of recycled mirrors and seashells.



Children's  
of Alabama

The large red ball in the terrazzo flooring is used throughout the facility to indicate locations where patients and families can obtain information — at information desks and nursing stations, for example. The circle mimics the Children's of Alabama red ball logo.