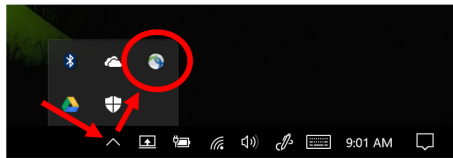
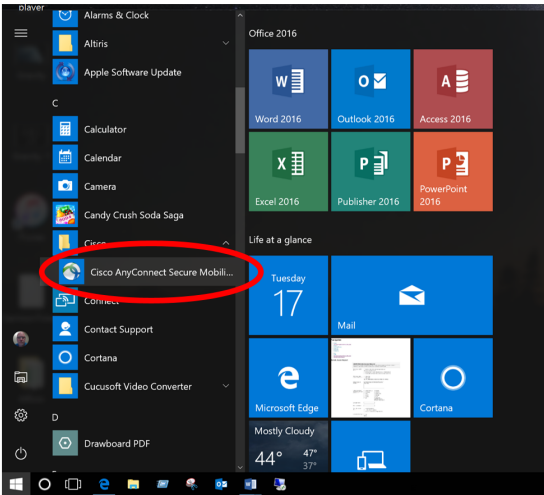


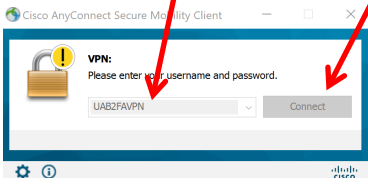
REMOTELY CONNECT TO OFFICE COMPUTER USING MICROSOFT REMOTE DESKTOP CONNECTION

Establish VPN Connection (When connected to OFF-campus wifi networks)

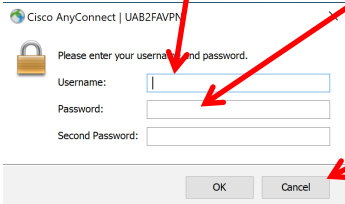
Launch **Cisco AnyConnect Secure Mobility Client** from **Start | Cisco | Cisco AnyConnect Secure Mobility Client** OR from the Cisco icon in the system tray



Select **UAB2FAVPN** and click **Connect**. If this entry does not show, enter “vpn.uab.edu” (without the quotes) and click the “Connect” button.



Enter your BlazerID and Password. Enter the word “push” (without the quotes) for “Second Password”. Click **OK**

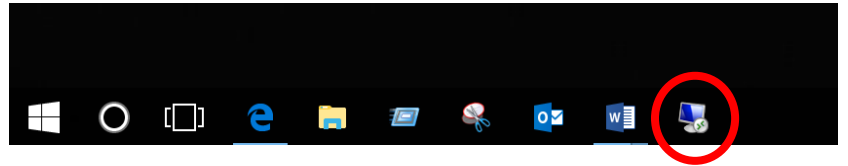
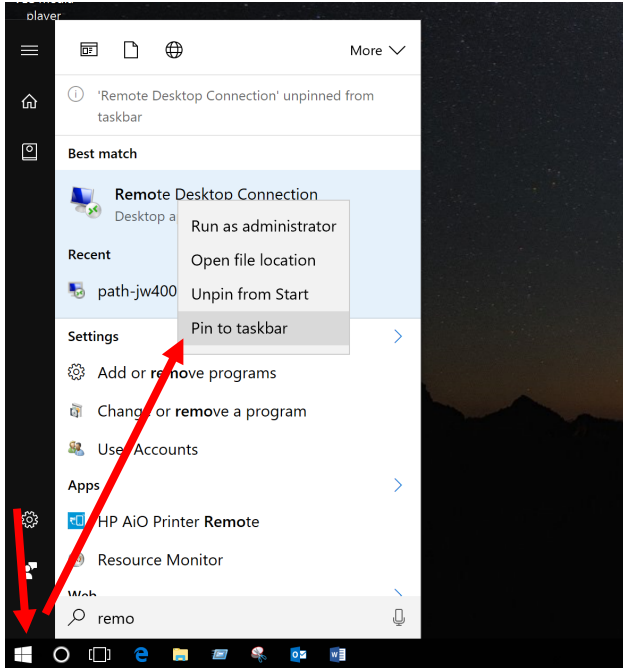


A successful VPN connection results in this icon in the system tray



Connect to Office Computer

The very first time running Remote Desktop Connection, click the Windows icon at the bottom, left corner, type **remote**, right-click **Remote Desktop Connection (Desktop app)** from the list returned and select **Pin to taskbar**. From here on you will find the icon in the bar at the bottom of the Windows screen so you can click there to launch the app.

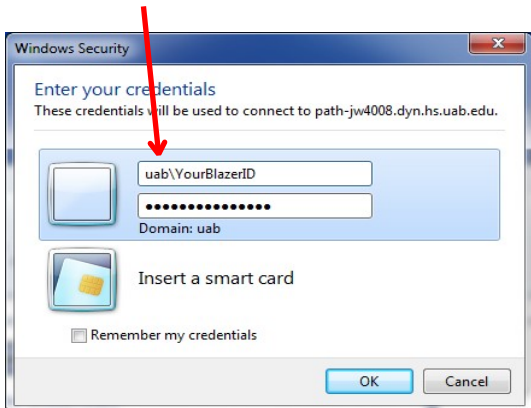


Launch Remote Desktop Connection

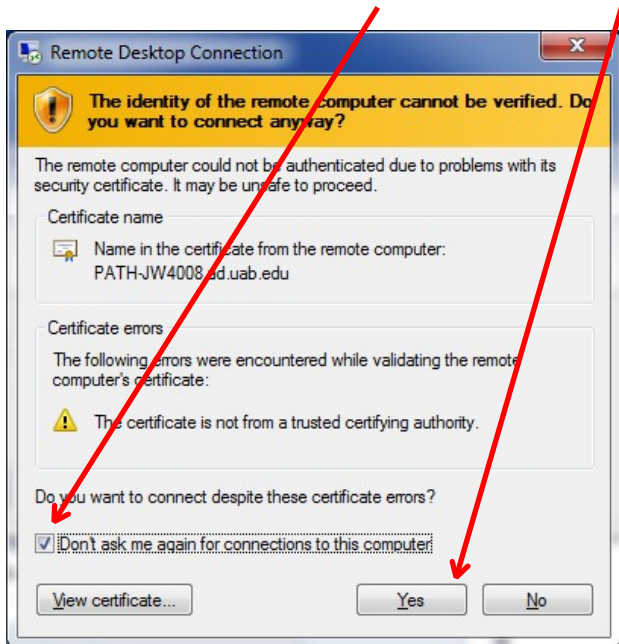
Type your computer name. (Supplied by PATHIS)



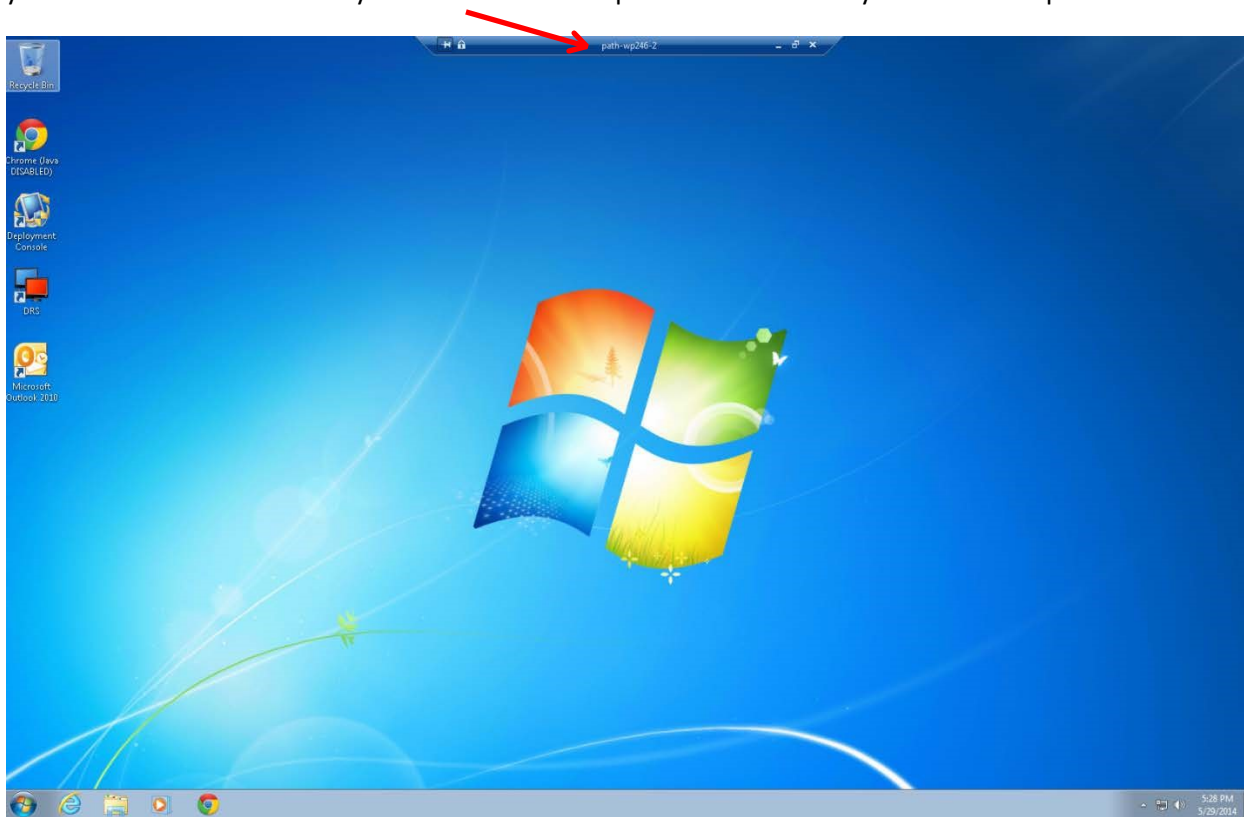
Enter your BlazerID and password in this format



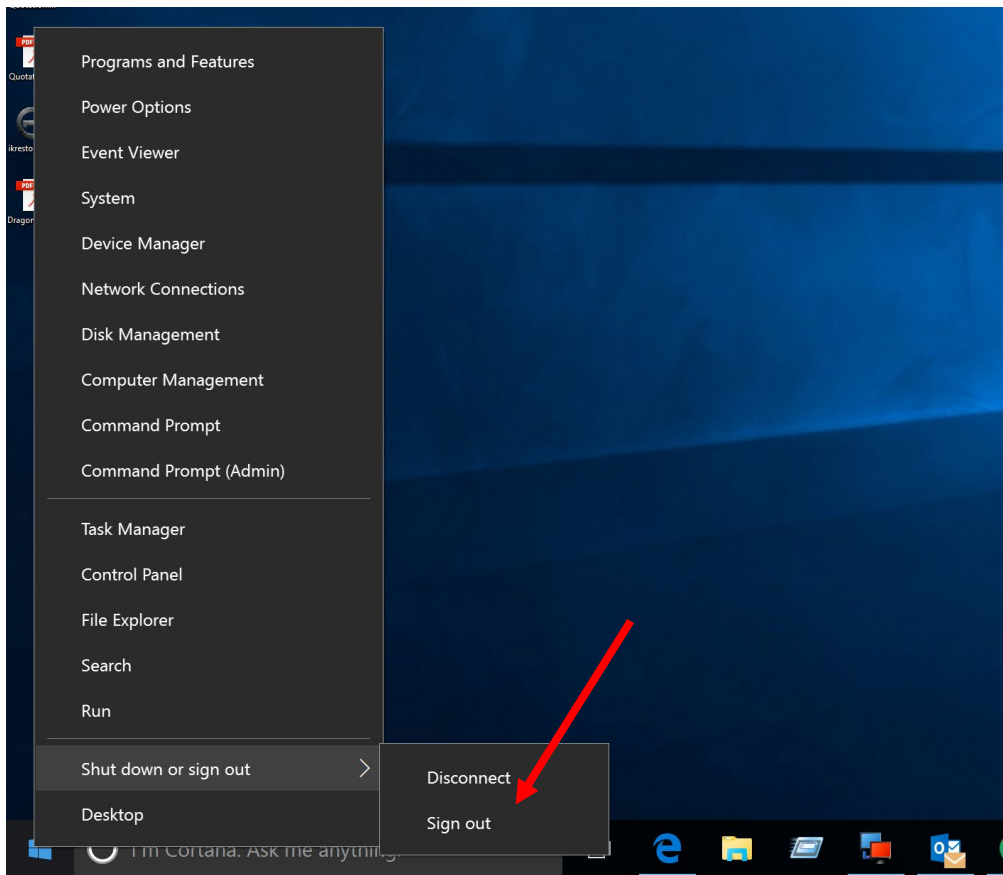
The following window may show. Check the box and click **Yes**



You should now see the exact desktop you would see if you were sitting at the office computer with you logged on. You'll know you are in a remote session by the banner at the top of the screen with your office computer name showing.



When your work is complete, the proper way to logoff the office computer is right-click the Windows icon at the bottom, left corner of the screen, hover the mouse over **Shut down or sign out** and click on **Sign out**. You will be logged off, disconnected from the remote computer and returned to your local computer screen.



Programs and Features

Power Options

Event Viewer

System

Device Manager

Network Connections

Disk Management

Computer Management

Command Prompt

Command Prompt (Admin)

Task Manager

Control Panel

File Explorer

Search

Run

Shut down or sign out

Desktop

Disconnect

Sign out