



Children's  
of Alabama



**CENTER FOR PALLIATIVE  
AND SUPPORTIVE CARE**



**ORGANIZATIONAL CHART**

**AFFILIATED CENTERS**

- INTEGRATIVE CENTER FOR AGING RESEARCH
- CENTER FOR OUTCOMES AND EFFECTIVENESS RESEARCH & EDUCATION
- CENTER FOR AIDS RESEARCH
- COMPREHENSIVE CANCER CENTER
- CENTER FOR NURSING RESEARCH
- MINORITY HEALTH RESEARCH CENTER
- CENTER FOR EXERCISE MEDICINE

**STEERING TEAM**

DIRECTOR  
ASSOCIATE DIRECTORS

**RODNEY TUCKER, MD, MMM**  
**MARIE BAKITAS, DNSC, CPRN**  
**RONIT ELK, PHD**  
**SYLVIA HUANG, PHD, MA**  
**JENNIFER HICKS, MSHA, MBA**

ADMINISTRATIVE DIRECTOR  
FOR SERIOUS ILLNESS  
ADMINISTRATIVE DIRECTOR  
ASSISTANT DIRECTORS

**ARAS ACEMGIL, MBA**  
**ASHLEY NICHOLS, MD**  
**STEPHEN HOWELL, DNP**  
**SUSAN MCCAMMON, MD**  
**NICK DIONNE-ODOM, PHD**  
**SHENA GAZAWAY, PHD**  
**KEN BOOCKVAR, MD-EX-OFFICIO**

GGPC DIVISION DIRECTOR

COMMUNITY ADVISORY  
BOARD & CENTER LIAISONS

SE INSTITUTE FOR  
INNOVATION IN PALLIATIVE &  
SUPPORTIVE CARE AT UAB

ALABAMA COMPREHENSIVE  
CANCER CONTROL  
COALITION

ALABAMA DEPARTMENT OF  
PUBLIC HEALTH

**CLINICAL WORKGROUP  
NICHOLS & HOWELL**

**VA PALLIATIVE  
CARE CLINICAL  
PROGRAMS**

- SAFE HARBOR UNIT
- INPATIENT CONSULTATION
- AMBULATORY CLINIC

**UAB PALLIATIVE  
CARE CLINICAL  
PROGRAMS**

- PCCU
- INPATIENT CONSULTATION
- SUPPORTIVE CARE & SURVIVORSHIP CLINIC
- CAREGIVER & BEREAVEMENT SUPPORT SERVICES
- PSYCHOLOGY & COUNSELING SERVICES
- CAPE

**COA CLINICAL  
PROGRAMS**

- INPATIENT CONSULTATION
- MUSC DYS CLINIC
- NEURO-ONCOLOGY CLINIC

**RESEARCH WORKGROUP  
BAKITAS, ELK, DIONNE-ODOM,  
& GAZAWAY**

**PALLIATIVE CARE RESEARCH  
PRIORITIES**

- INCREASING ACCESS TO PALLIATIVE AND SUPPORTIVE CARE IN RURAL & UNDER RESOURCED POPULATIONS
- ADDRESSING CULTURE, LIVED EXPERIENCES AND RACISM; TOWARDS HEALTH EQUITY
- SYMPTOM SCIENCE
- IMPROVING CAREGIVER SUPPORT & BEREAVEMENT CARE
- ENHANCING COMMUNICATION SKILLS AMONG PATIENTS & PROVIDERS

GRECC CTAC  
BEACON NPCRC

**SIIPSC  
WORKGROUP  
ELK & BAKITAS**

- INNOVATION SUMMIT
- CULTURAL TRAINING
- NETWORKING PLATFORMS
- SPECIALIZED TRAINING AND WEBINARS

**EDUCATION  
WORKGROUP  
HUANG &  
MCCAMMON**

**FELLOWSHIP  
COMMITTEE  
KEZAR**

- PALLIATIVE CARE LEADERSHIP CENTER (PCLC)
- UAB CLINICAL TRAINING ACADEMY (CTA)
- PALLIATIVE CARE SUBSPECIALTY
- NURSE PRACTITIONER PROGRAM
- PSYCHOLOGY & COUNSELING TRAINING PROGRAM

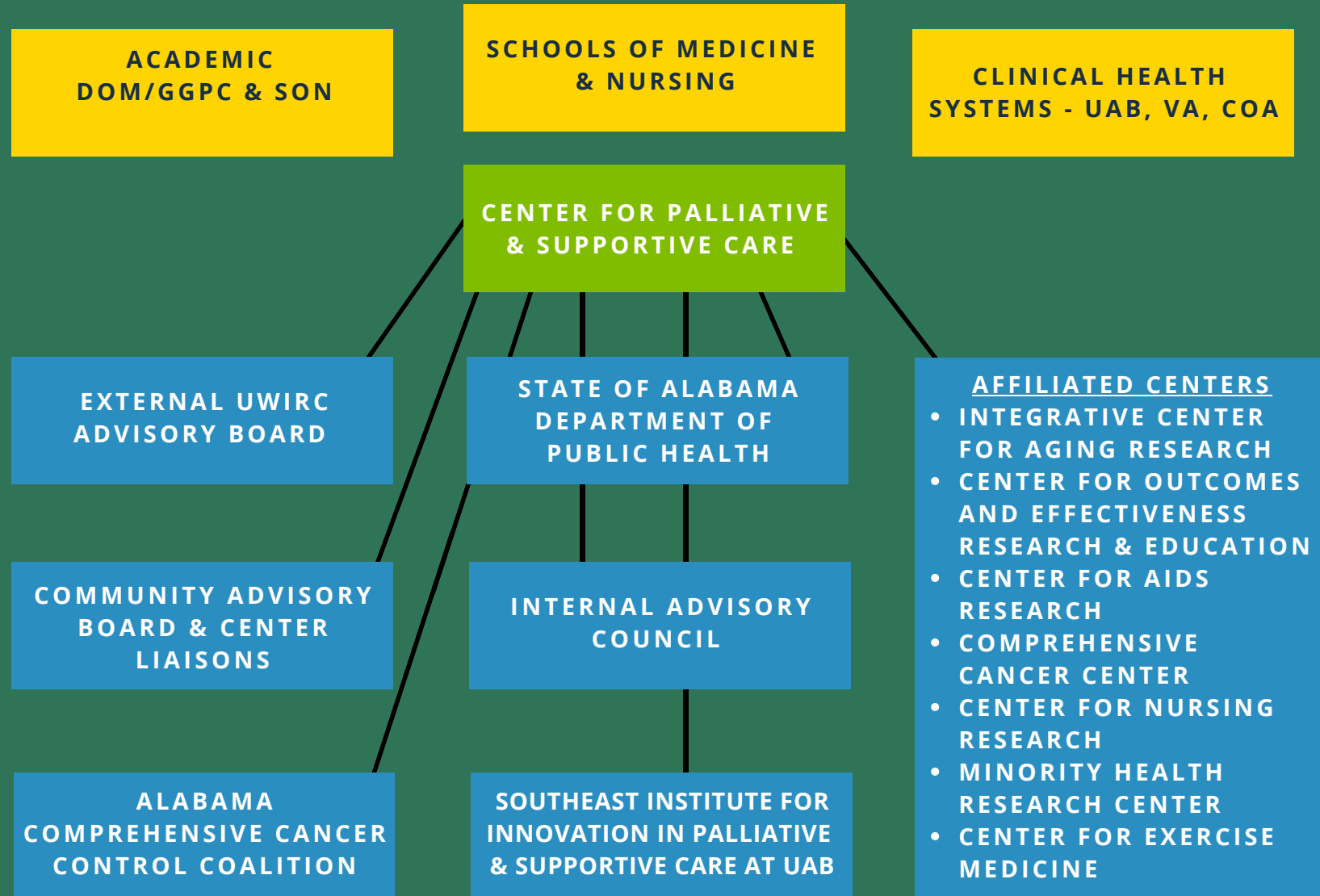
**COMMUNICATION  
& ENGAGEMENT  
TUCKER & ACEMGIL**

- DEVELOPMENT
- WEBSITE & SOCIAL MEDIA PLATFORMS
- PCLC/CTA MARKETING
- COMMUNITY ADVISORY BOARD
- COMMUNITY ORGANIZATIONS
- FAITH COMMUNITIES
- PAYOR PARTNERSHIPS
- CENTER NEWSLETTERS



# CENTER FOR PALLIATIVE AND SUPPORTIVE CARE

## RELATIONAL STRUCTURE





# CENTER FOR PALLIATIVE AND SUPPORTIVE CARE

## ADMINISTRATIVE STRUCTURE EXECUTIVE COMMITTEE & STEERING TEAM

