

The University of Alabama School of Medicine traces its roots to the Medical College of Alabama.

The Medical College was founded in 1859 in Mobile, Alabama, under the leadership of William H. Anderson, its first dean. In 1907, the Alabama Legislature placed the medical college under the control of the University of Alabama Board of Trustees, and the college became the medical school of the University of Alabama.



# ESTABLISHING A LEGACY: 1859-1945



In 1920, the University of Alabama Board of Trustees voted to move the medical school from Mobile to Tuscaloosa, where the program would re-open as a two-year preclinical school.

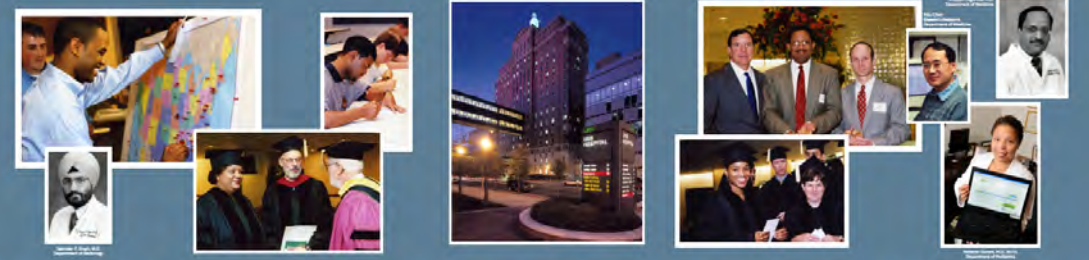
In 1945, the two-year program was expanded to a four-year program to be located in Birmingham, and the two-year program was terminated.



# EVOLVING TRADITION: 1946-1969



# BUILDING ON SUCCESS: 1970-1999



# CELEBRATING EXCELLENCE: 2000-ONWARD





# The School of Medicine Office for Diversity and Inclusion thanks:

## THE ARTS IN MEDICINE DIVERSITY COMMITTEE

Laura Coulter – Office for Diversity and Inclusion

Jordan DeMoss – UAB Hospital

Mona Fouad – School of Medicine

Evelyn Jones – Office for Diversity and Inclusion

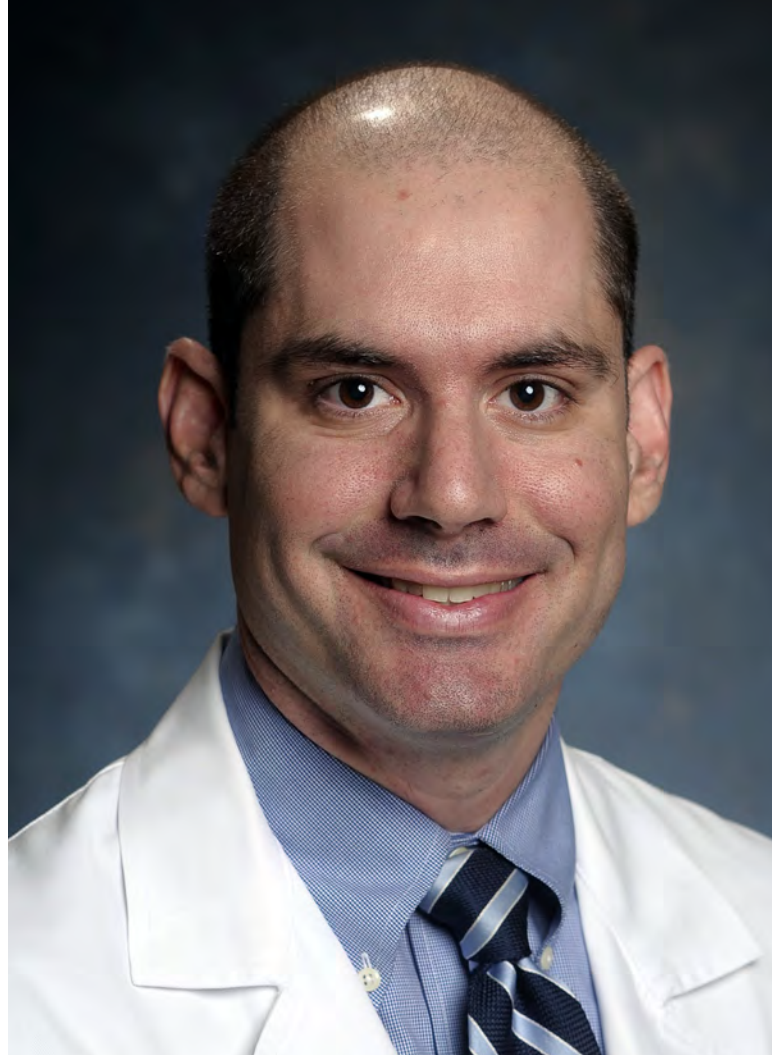
Kimberly Kirklin – UAB Arts in Medicine

Tim Pennycuff – UAB Archives

Stefanie Rookis – Alabama Museum  
of the Health Sciences

Vicki Vickers – UAB Hospital

*... and all those who submitted photographs from their international activities!*

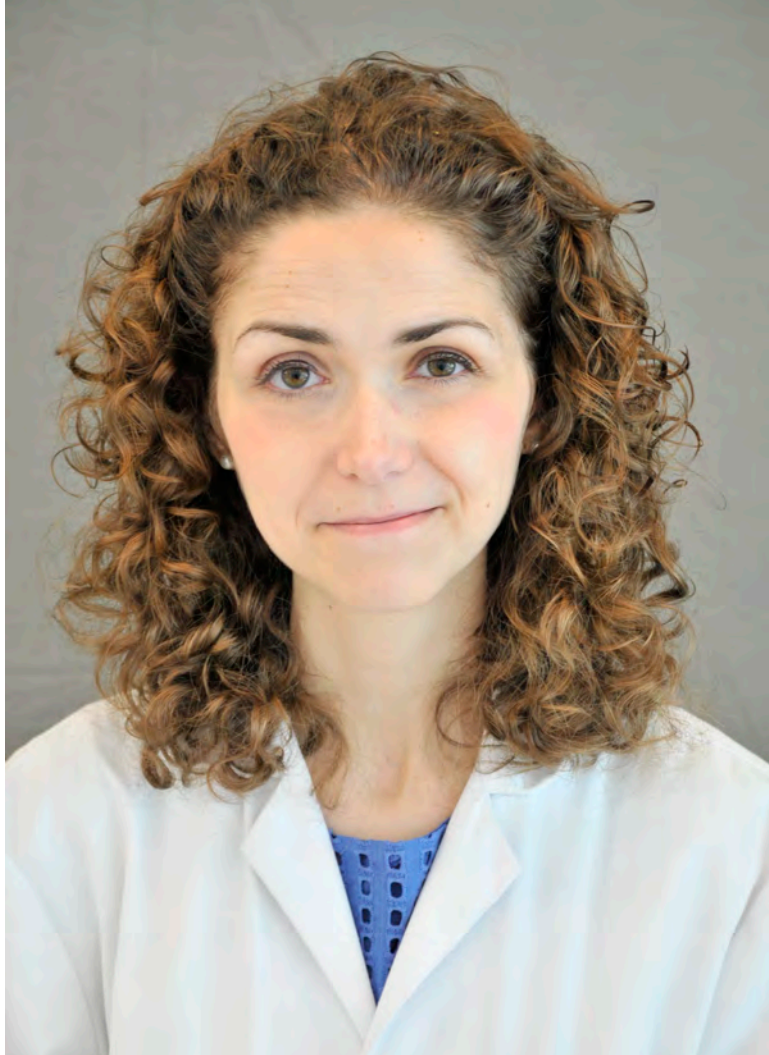


## New Cystic Fibrosis Drug

Phase III Trial reveals Tezacaftor/  
Ivacaftor combination improves lung  
function without adverse side effects.

**Steven Rowe, MD**

*Professor, Pulmonary, Allergy, and Critical Care*



Published in *Clinical Case Reports*

“Concomitant imatinib and ibrutinib in a patient with CML and CLL”

**Lauren Shea, MD**  
*PGY-3*

# Medical Grand Rounds

Wednesday,  
May 24, 2017

12:00 P.M. in  
Margaret Cameron  
Spain Auditorium

## What Does It Take to Save Lives? The Science of Teamwork



---

**Eduardo Salas, PhD**

Professor and Chair  
Department of Psychiatry  
Rice University

---