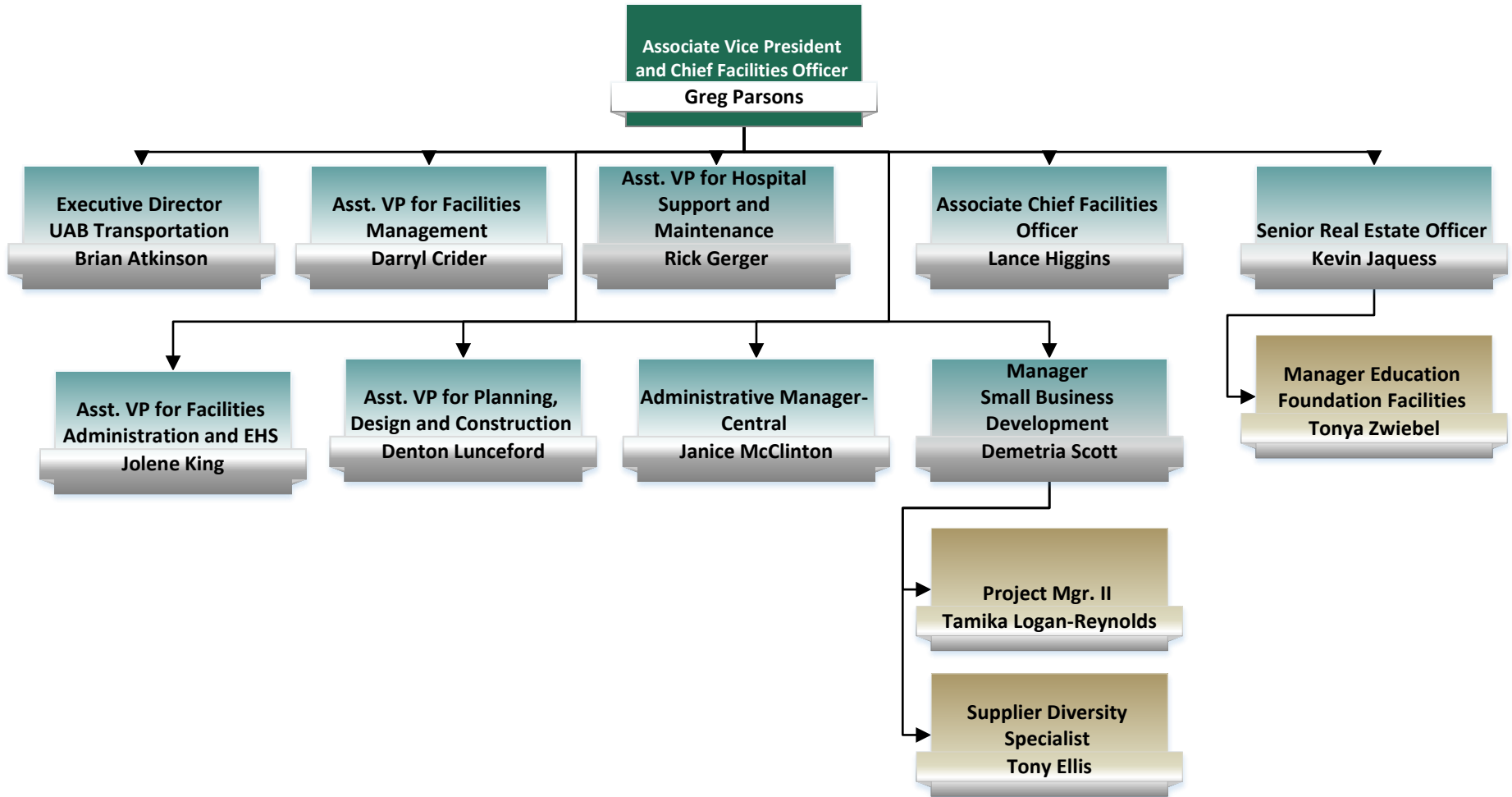
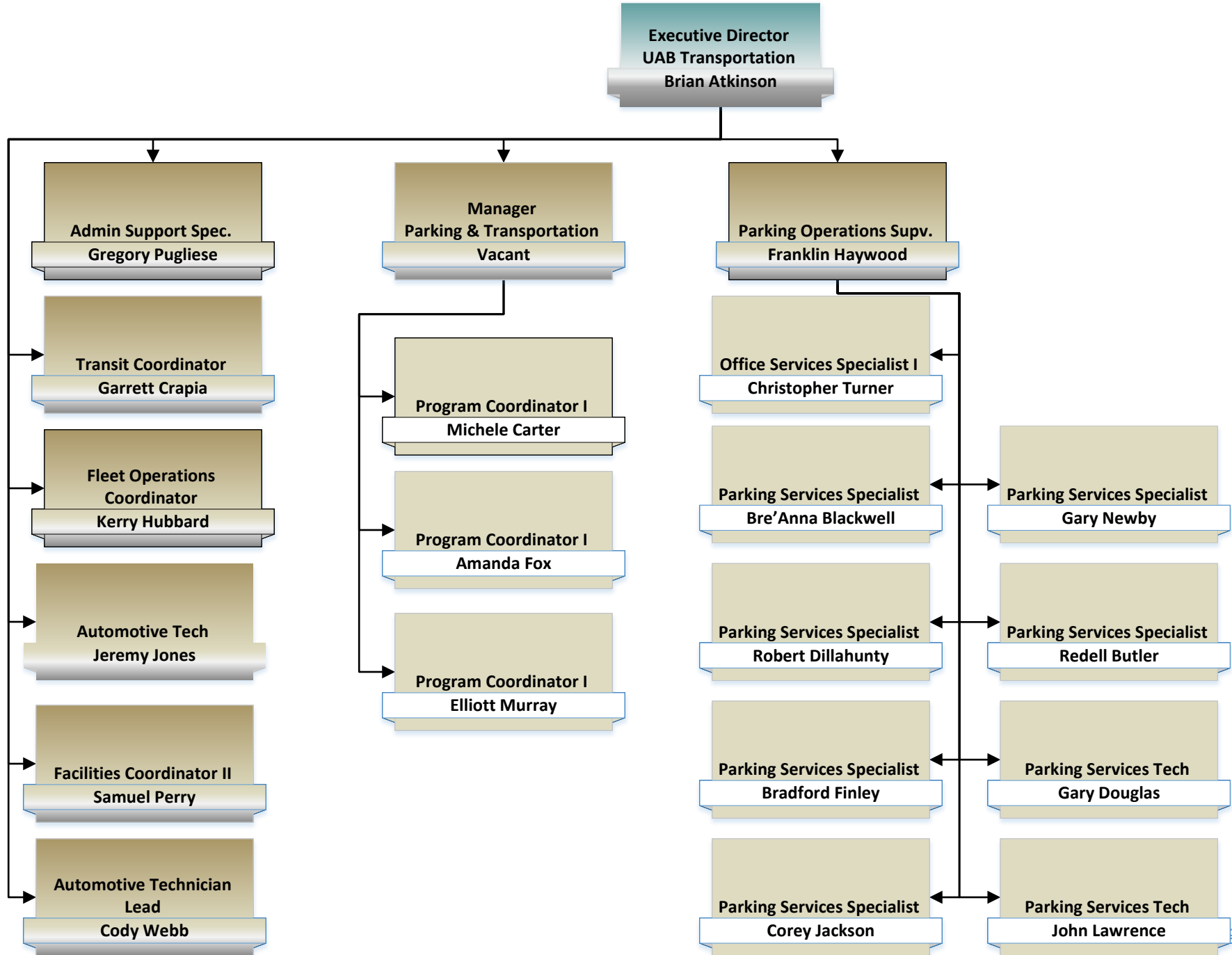


# Office of the Chief Facilities Officer

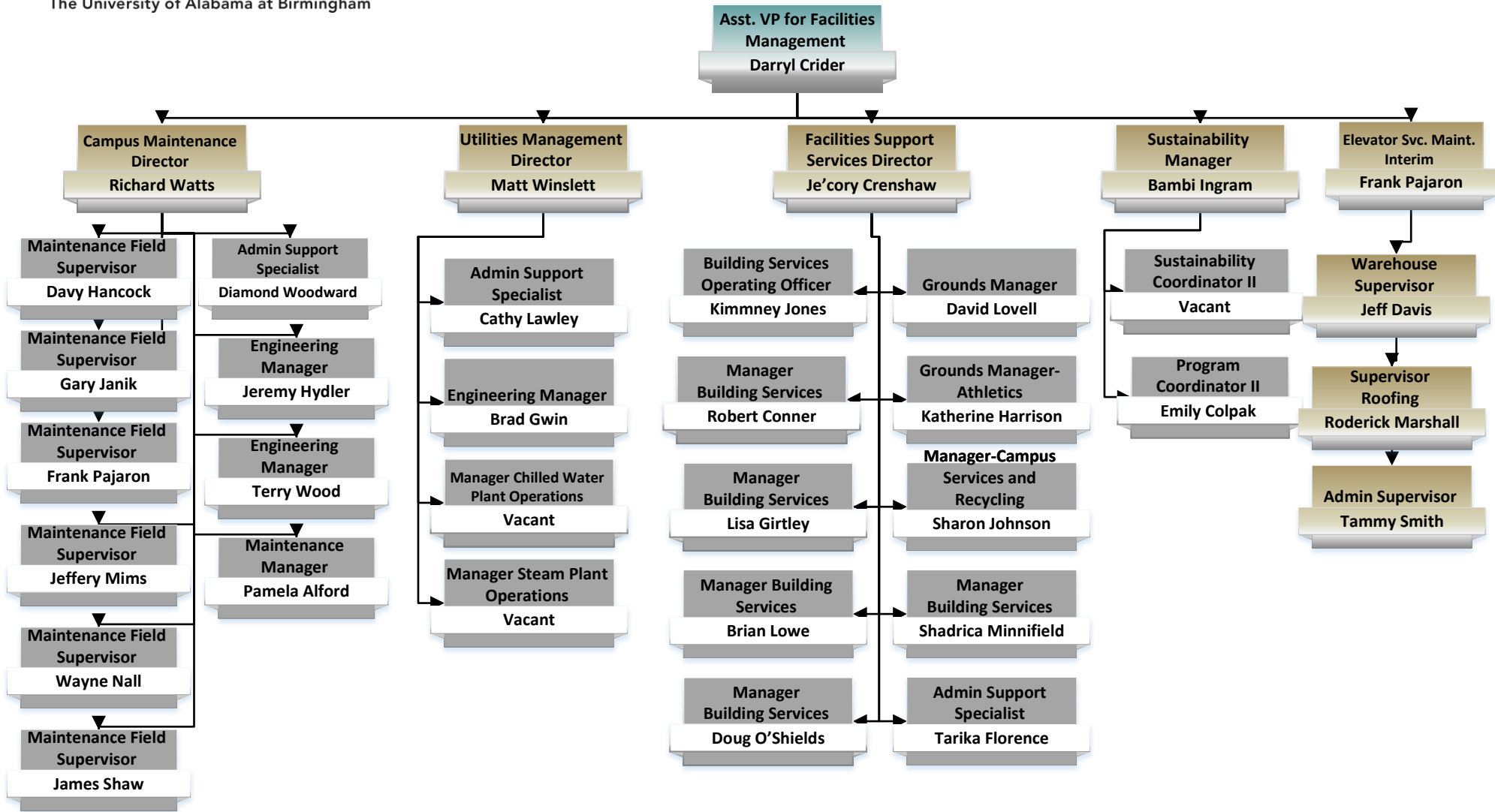




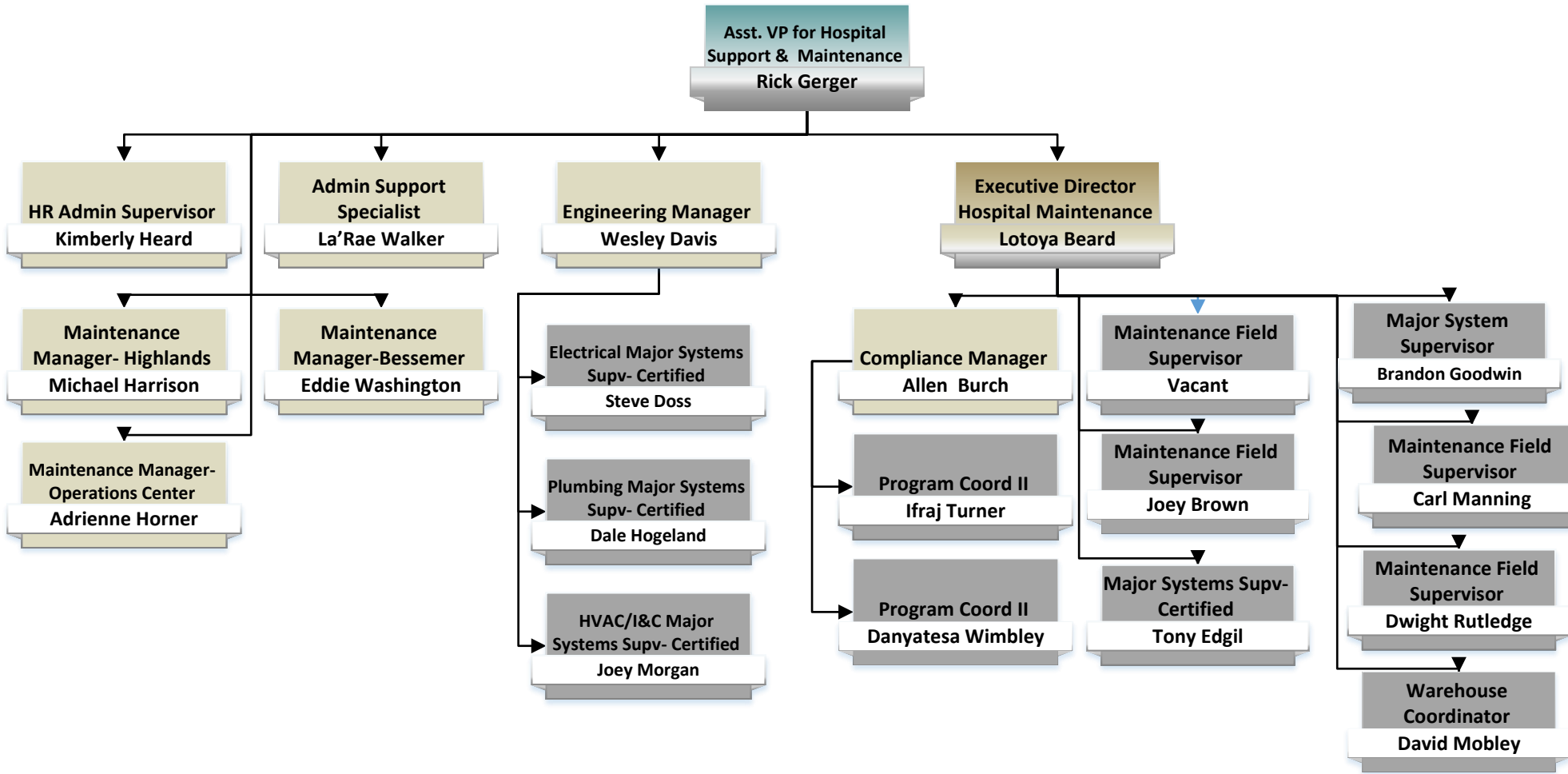
# UAB Transportation Services



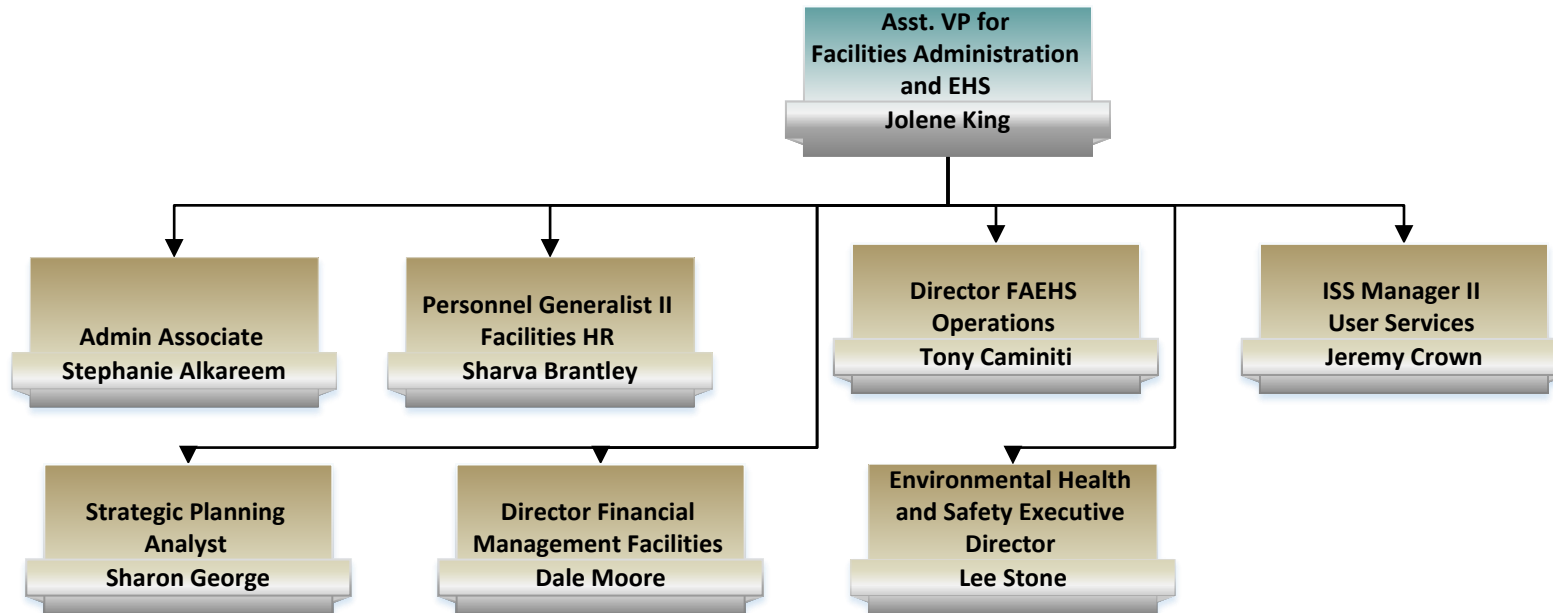
# Facilities Management



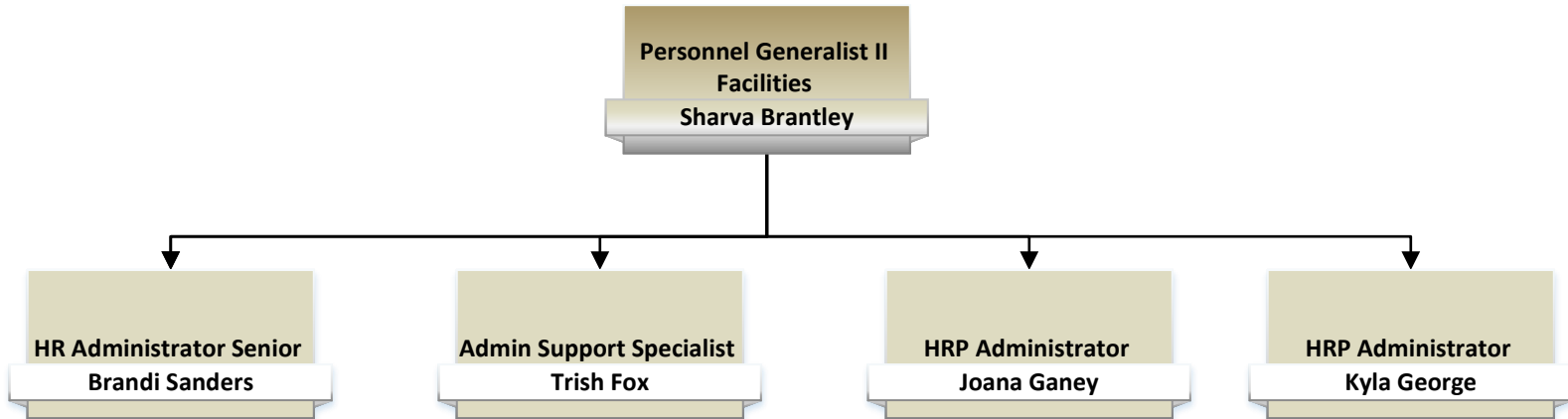
## Hospital Support and Maintenance



### Facilities Administration and Environmental Health and Safety



## Facilities Human Resources



### Facilities Areas Supported

**Sharva Brantley, Personnel Generalist II:** Areas Supported: Office of CFO

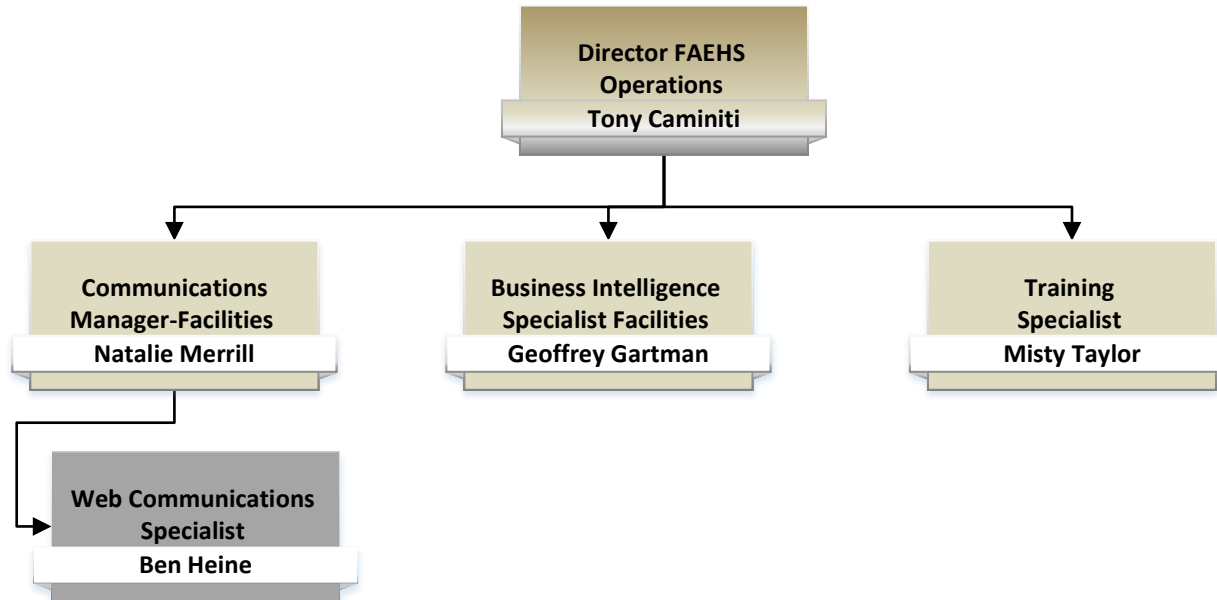
**Brandi Sanders, HR Administrator Senior:** Areas Supported: Facilities Support Services, Facilities Dispatch, Facilities Management, Utilities and Energy Management

**Trish Fox, Admin Support Specialist:** Areas Supported: Building Services, Grounds, Roofing, Sustainability, Elevator Maintenance

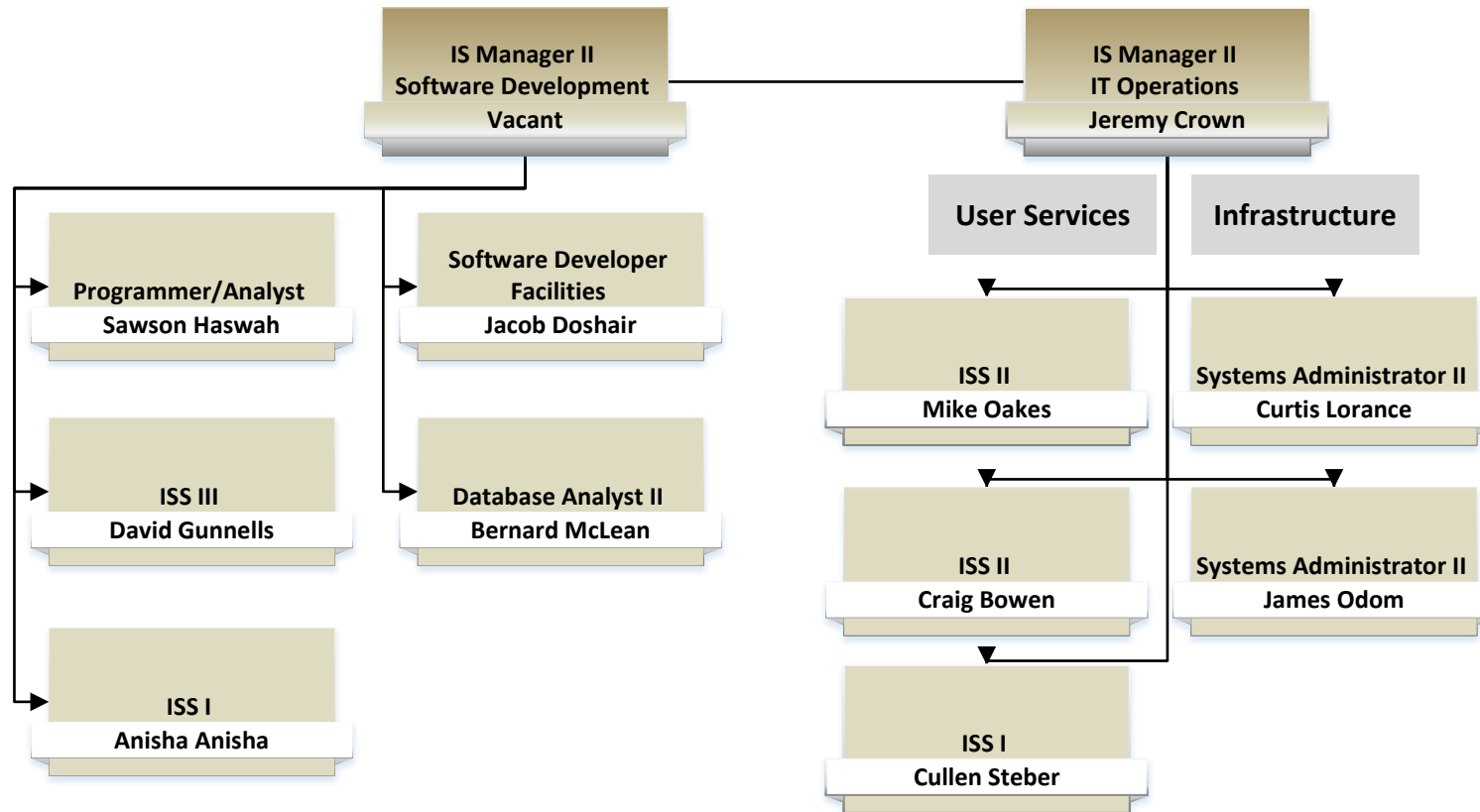
**Joana Ganey, HRP Administrator:** Areas Supported: Campus Maintenance, Facilities Administration and Environmental Health & Safety, Transportation, Building Services (Woodward House)

**Kyla George, HRP Administrator:** Areas Supported: Planning, Design, and Construction, Facilities Human Resources Office Support

### FAEHS Operations

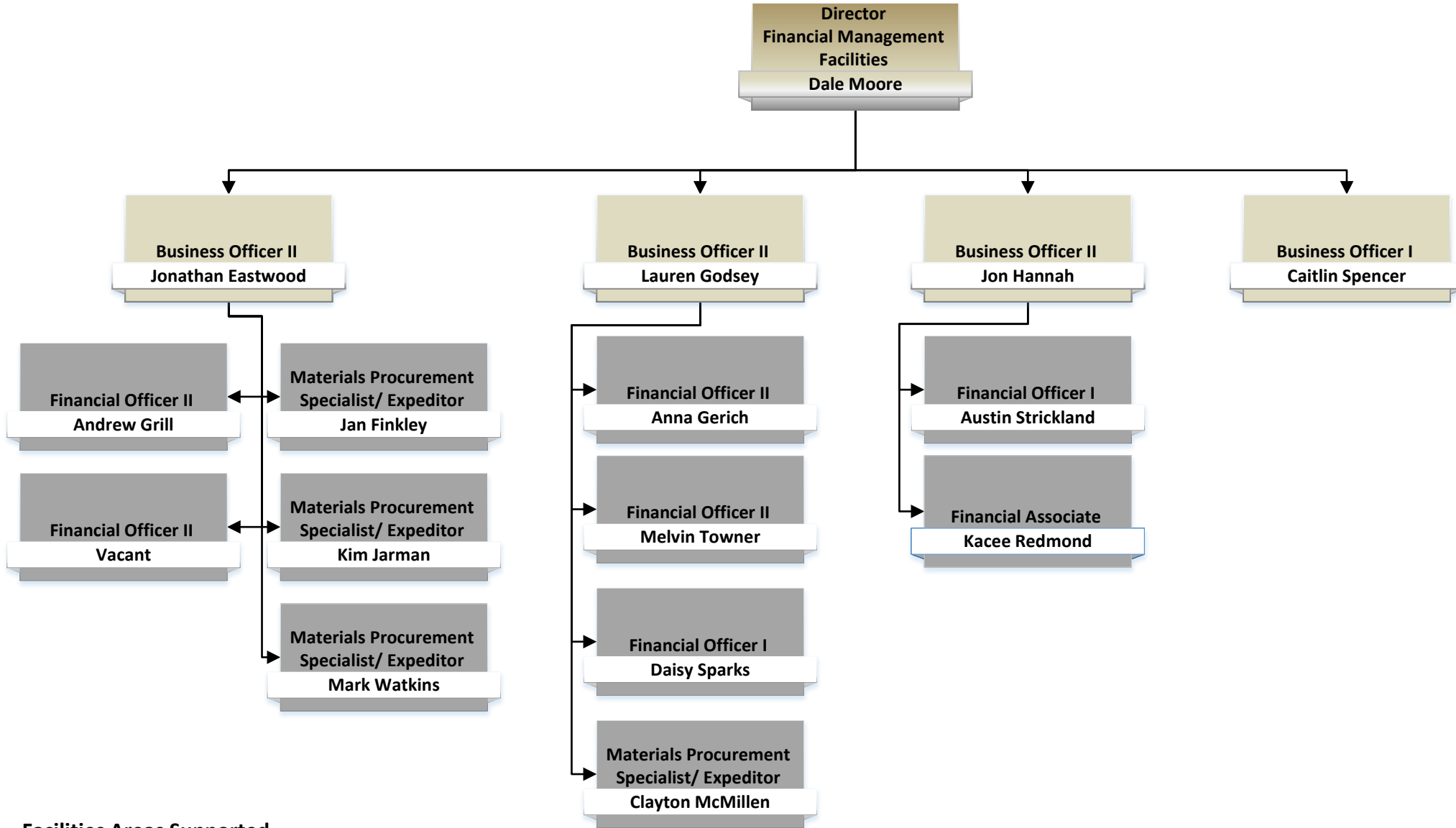


### Facilities Information Technology





# Facilities Financial Management



## Facilities Areas Supported

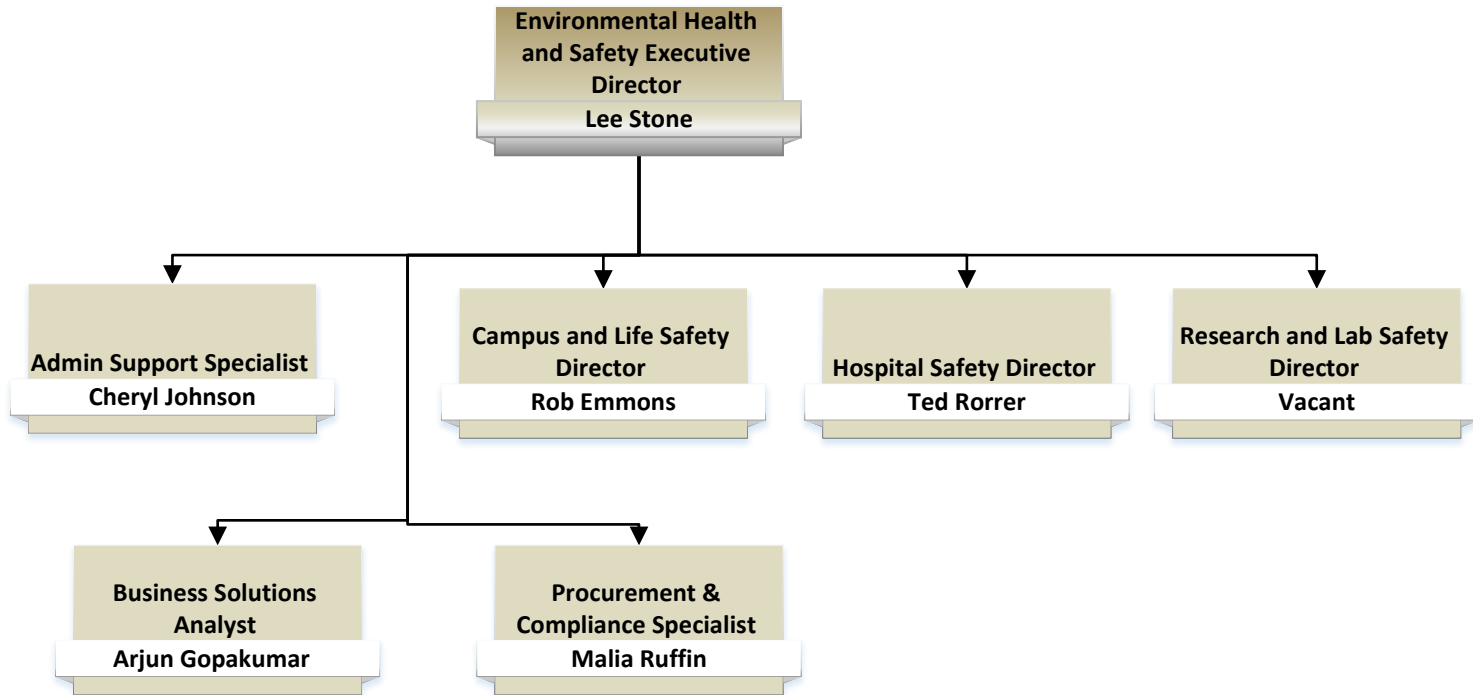
**Lauren Godsey, Business Officer II:** Areas Supported: Chief Facilities Officer, Hospital Maintenance, and Facilities Administration and Environmental Health and Safety

**John Hannah, Business Officer II:** Areas Supported: Planning Design and Construction

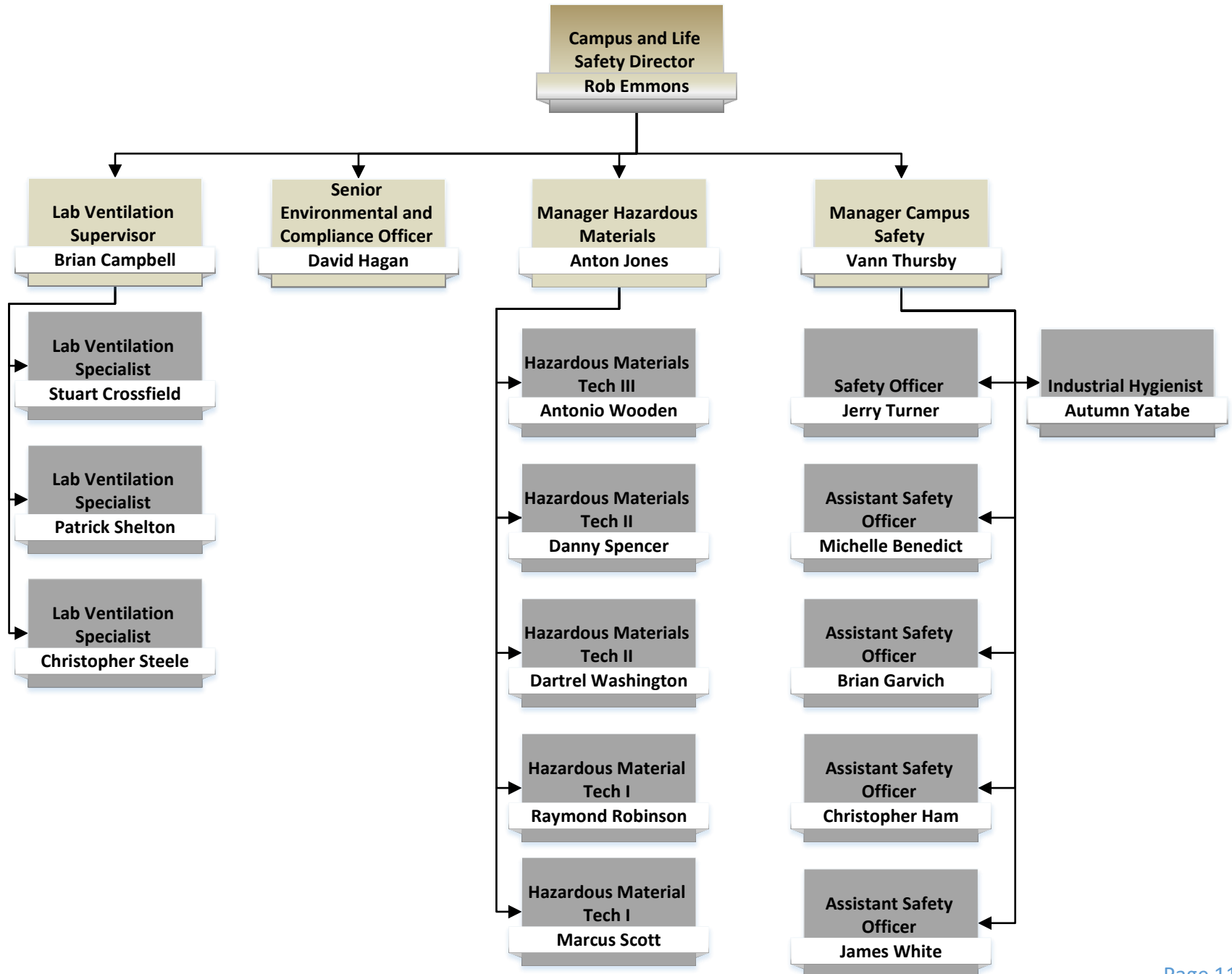
**Jon Eastwood, Business Officer II:** Areas Supported: Facilities Management

**BOI: Areas Supported:** Chief Facilities Officer & Facilities Business Units

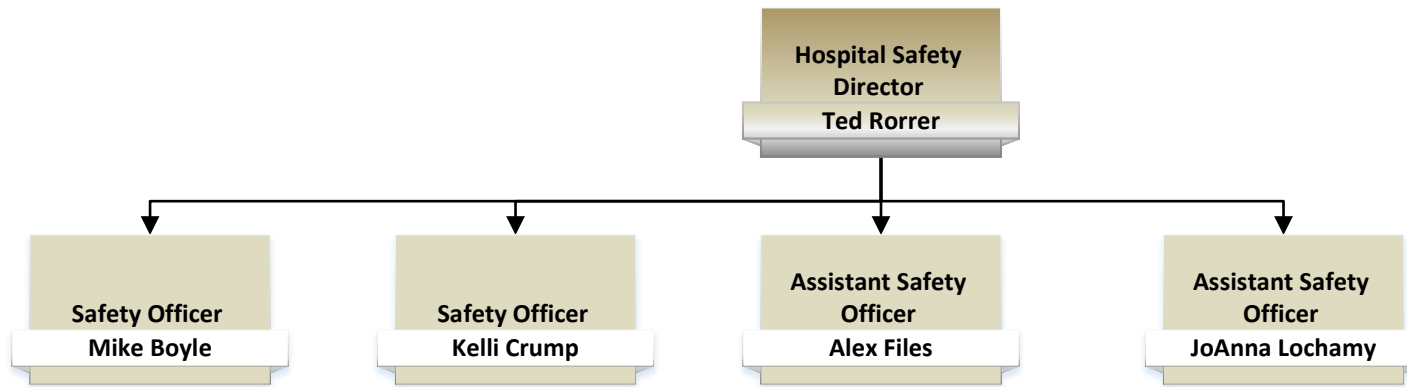
### Environmental Health and Safety



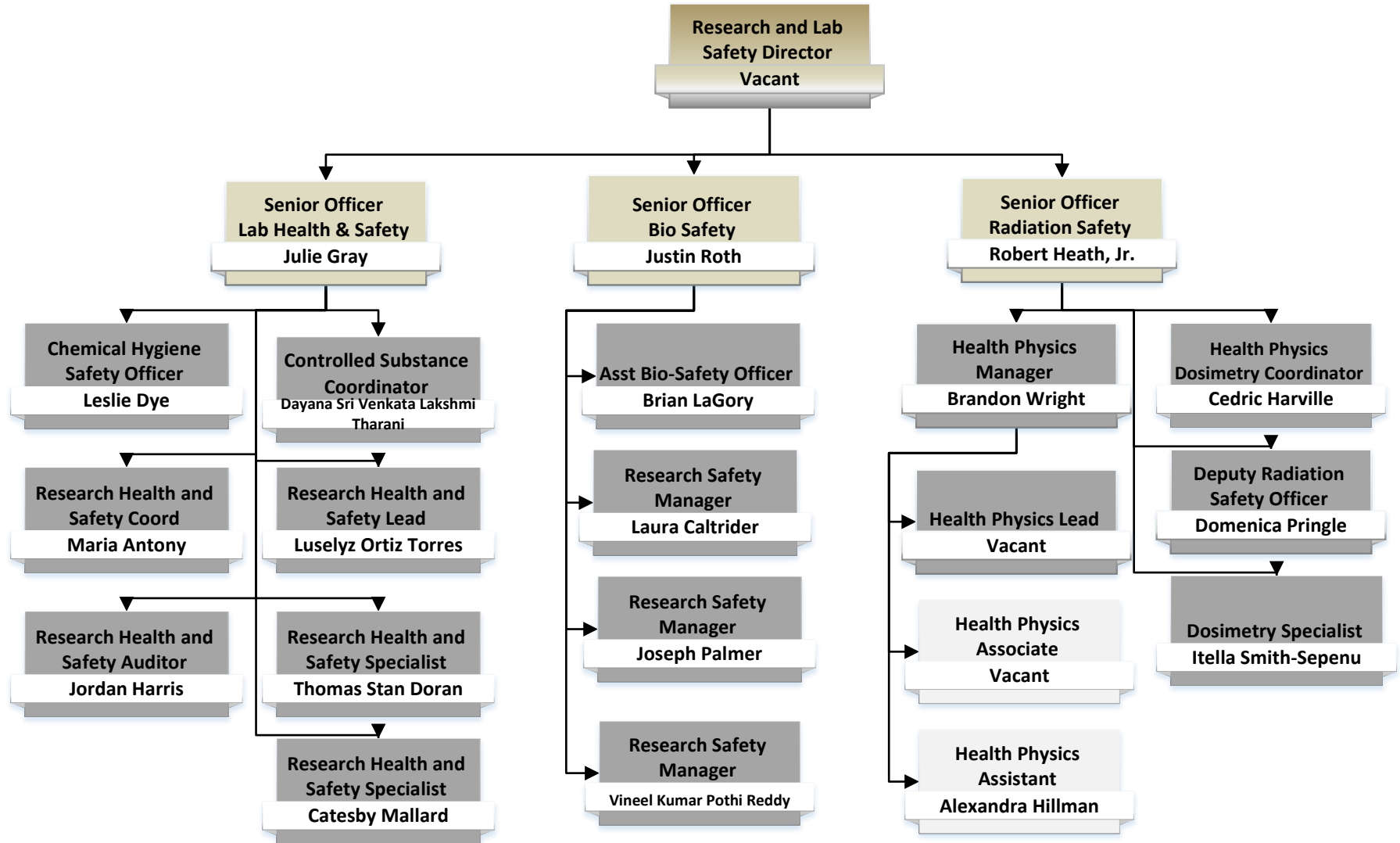
### Campus and Life Safety



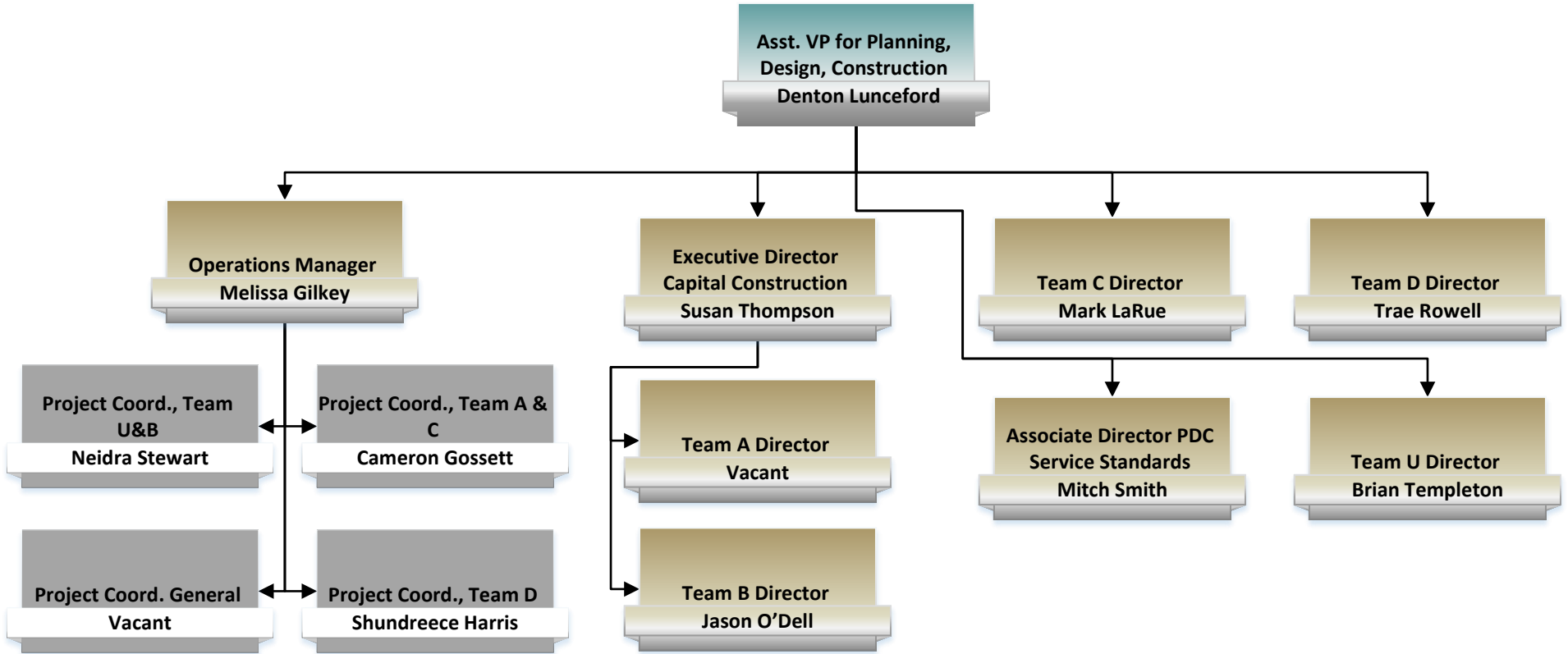
## Hospital Safety



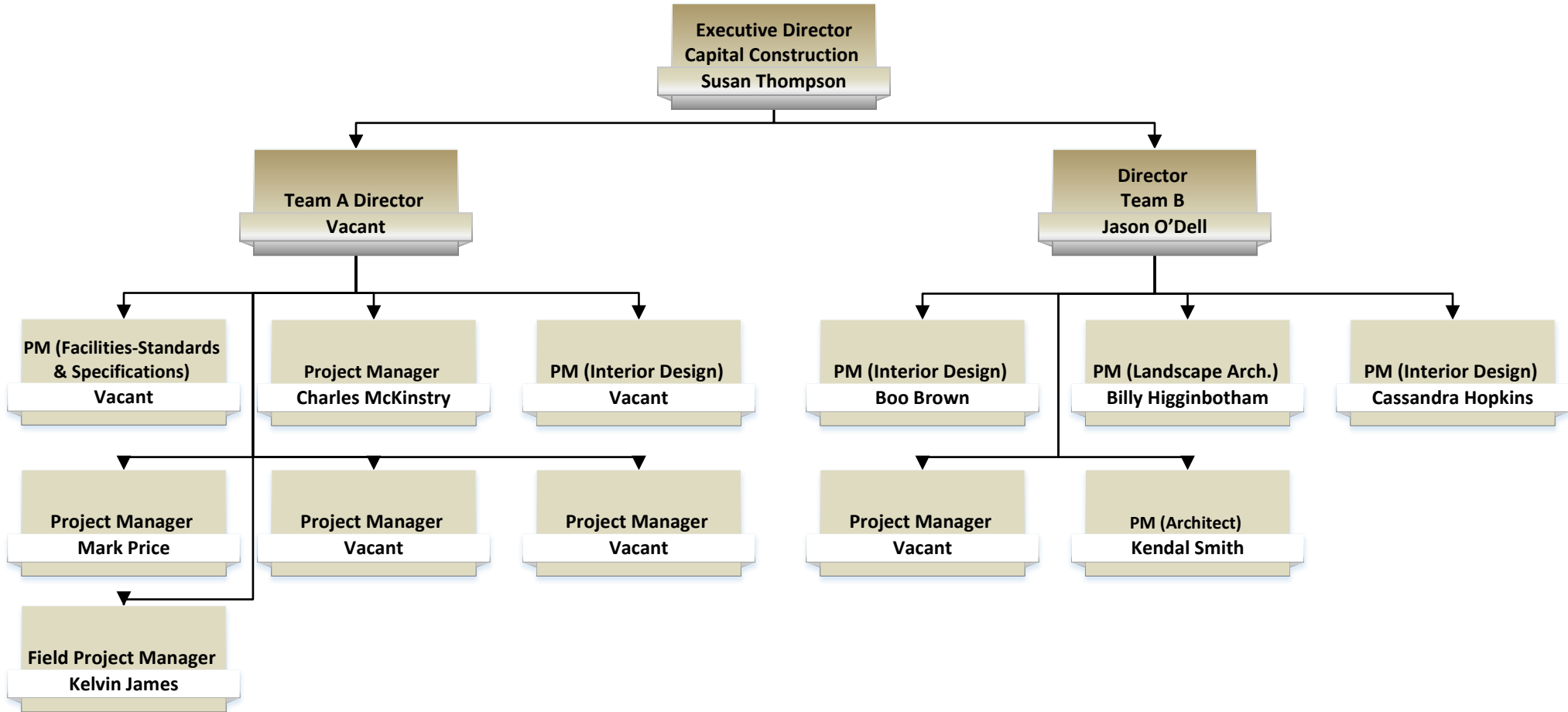
## Research and Lab Safety



### Planning, Design and Construction



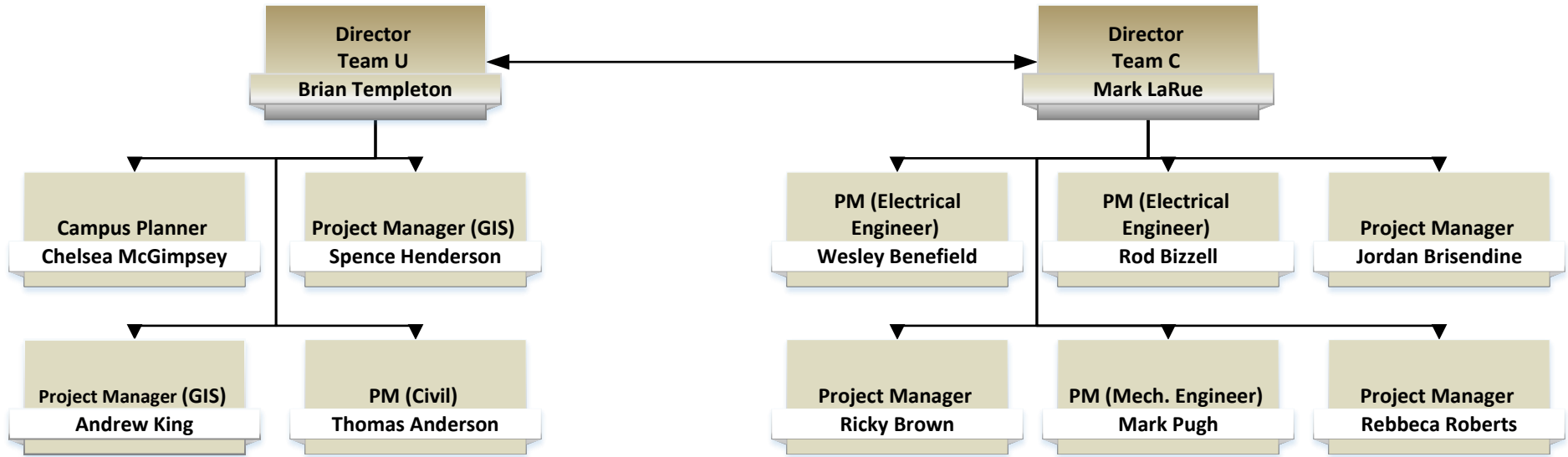
## Planning, Design & Construction Team A & Team B



Planning, Design and Construction Team A	
<ul style="list-style-type: none"> <li>School of Medicine</li> <li>School of Health Professions</li> <li>Central Information Technology</li> <li>Nursing</li> </ul>	<ul style="list-style-type: none"> <li>Optometry</li> <li>Dentistry</li> <li>Animal Research</li> <li>VP Research</li> </ul>

Planning, Design and Construction Team B	
<ul style="list-style-type: none"> <li>Provost</li> <li>Art &amp; Sciences</li> <li>Business</li> <li>Student Services</li> </ul>	<ul style="list-style-type: none"> <li>Engineering</li> <li>Education</li> <li>Graduate School</li> <li>School of Public Health</li> </ul>

## Planning, Design & Construction Team U & Team C

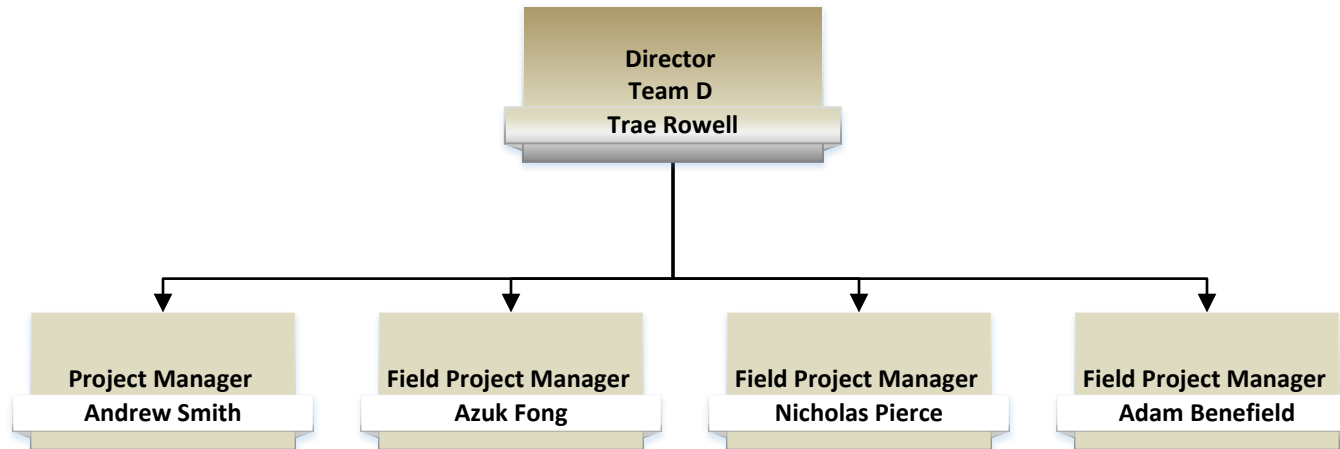


Planning, Design and Construction Team U	
<ul style="list-style-type: none"> <li>• Landscape Master Plan</li> <li>• City Planning Liaison</li> <li>• ACDP</li> <li>• UAB-Property</li> </ul>	<ul style="list-style-type: none"> <li>• Landscape Architecture Civil</li> <li>• Utilities &amp; Maintenance</li> <li>• Athletics</li> <li>• Parking &amp; Transportation</li> </ul>

Planning, Design and Construction Team C	
<ul style="list-style-type: none"> <li>• Maintenance &amp; Utilities</li> <li>• Deferred Maintenance</li> <li>• Parking Decks</li> </ul>	<ul style="list-style-type: none"> <li>• Condition Assessment Standards</li> </ul>



## Planning, Design & Construction Team D



Planning, Design and Construction Team D	
<ul style="list-style-type: none"> <li>• Campus projects equal to or less than \$100k</li> <li>• All schools/colleges</li> <li>• Renovations</li> </ul>	<ul style="list-style-type: none"> <li>• New Equipment</li> <li>• Infrastructure Needs</li> </ul>