

DATA CRU

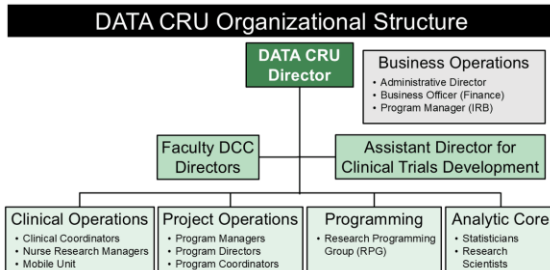
DATA coordinating and Collaborative Research Unit

Department of Biostatistics, School of Public Health

About Us

Established in 2003, the DATA coordinating and Collaborative Research Unit (DATA CRU) is a **data coordinating center** for multisite longitudinal studies and randomized clinical trials.

- Housed in the Department of Biostatistics in the School of Public Health
- 40+ staff
- 12+ affiliated multidisciplinary faculty
- Team members include:
 - Clinical Research Coordinators
 - Program Managers and Coordinators
 - Statisticians and Analysts
 - Programmers and Data Managers



DATA CRU team members are trained in ICH Good Clinical Practice (GCP) and knowledgeable of FDA regulations for GCP.

Contact Us

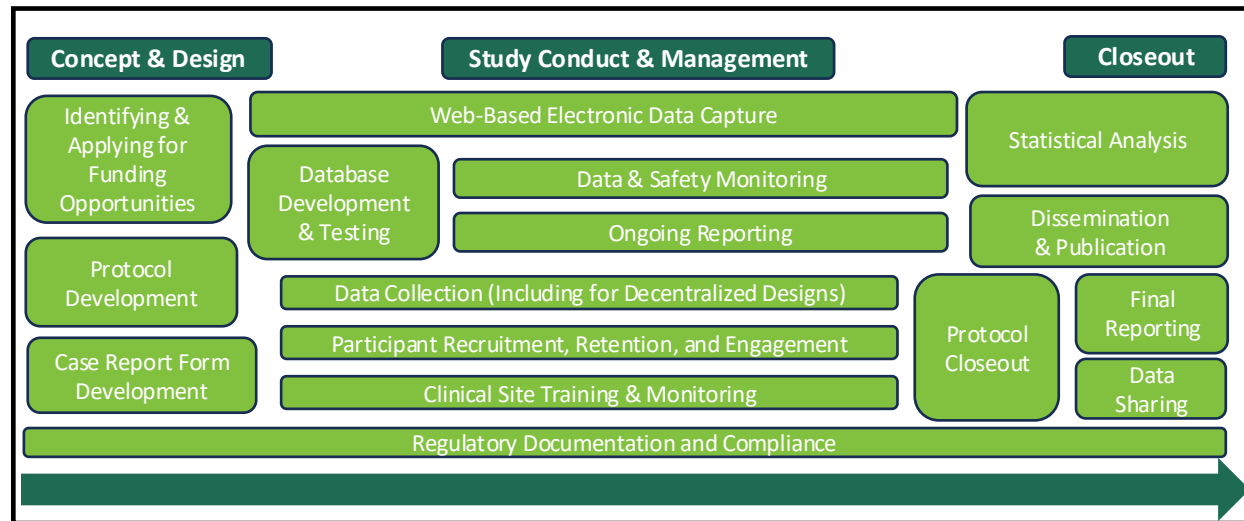
- Email: DataCRU@uab.edu
- Website: <https://www.uab.edu/datacru/>

The DATA CRU specializes in the **design, management, and statistical analysis** of interdisciplinary, multisite randomized clinical trials and longitudinal studies.



Capabilities & Expertise

The DATA CRU has experience in **all aspects of study design and protocol implementation** for a range of projects, with **project scope** ranging from N = 13-30,000 participants and 1-168 participating sites.



Past & Current Projects

- 20+ completed and 20+ ongoing projects
- **Clinical areas of focus** have included OB/GYN, Neonatology, Pediatrics, Aging, Lung Health, and Neurology
- **Specific topics** of study include stroke, CVD, MS, MG, Alzheimer's, CF, COPD, pregnancy, rheumatoid arthritis, diabetes
- **Funders** include NHLBI, NICHD, NINDS, NCI, NIDA, AHA, PCORI, NIAMS, DOD, Myasthenia Gravis Foundation of America

