



Center for Clinical and Translational Science

CCTS Forum: Getting to K...and Beyond!



Michael J. Mugavero, MD, MHSc
Co-Director, CCTS Training Academy

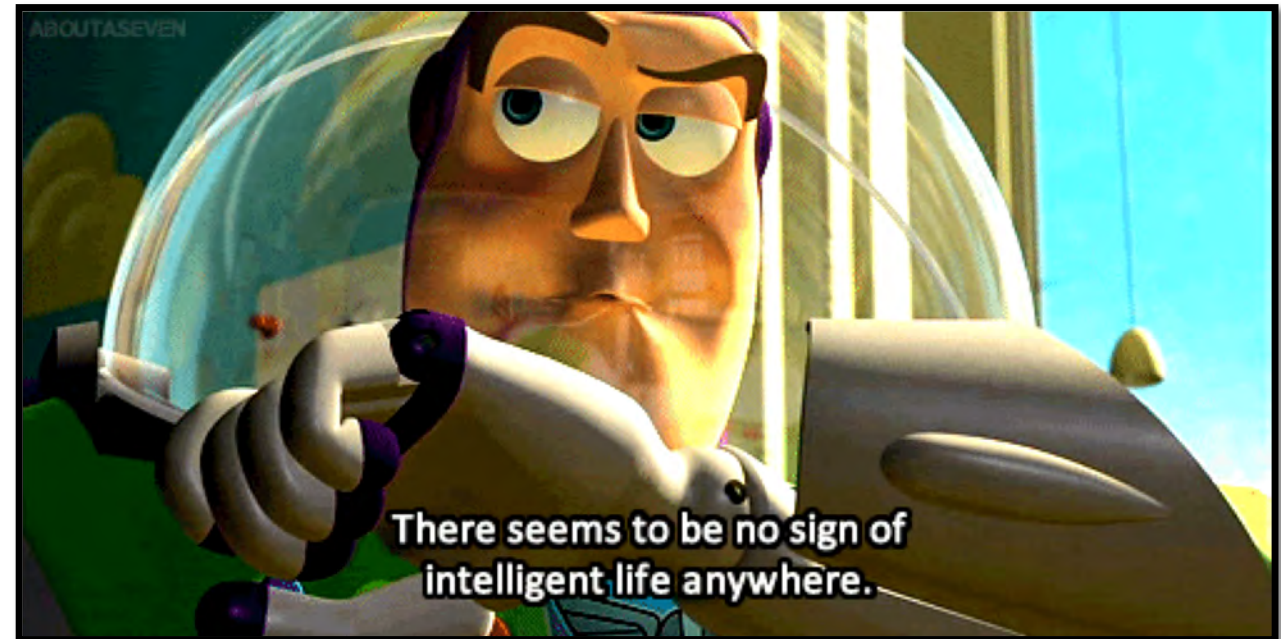
Becky Reamey, MA, PhD
Program Director, CCTS Training Academy

CENTER FOR CLINICAL & TRANSLATIONAL SCIENCE



CCTS Forum: Getting to K...and Beyond!

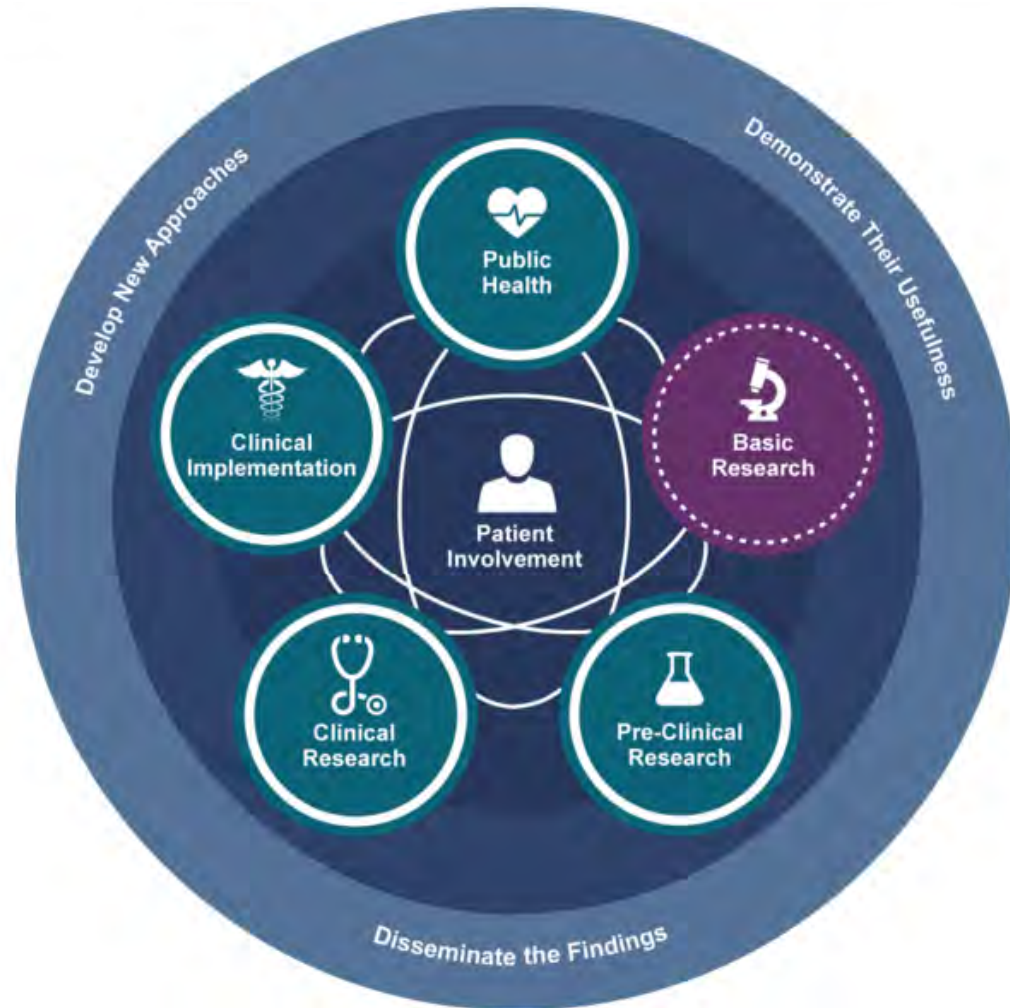
1. Introducing the CCTS
2. 'Getting to K' CCTS Touchpoints
 - Research Commons
 - Clinical Translation
 - Training Academy – GRIT
3. '...and Beyond' with the CCTS
 - CTS-TP (EPI 680)
 - TIERS → Building a 'K' Community
 - LEAD: 12-month Leadership Training Program



CTSA Clinical & Translational
Science Awards Program

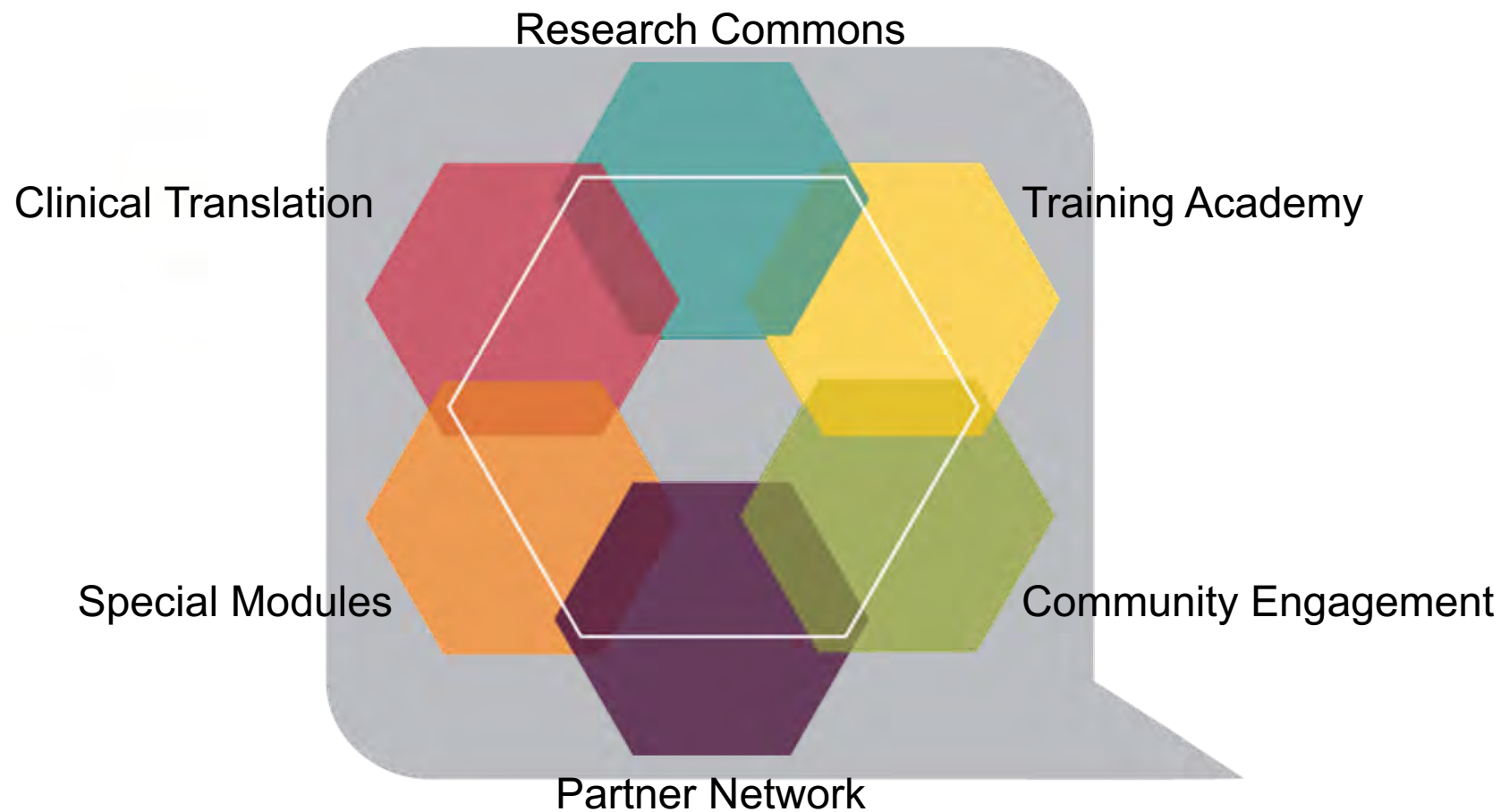


National Center
for Advancing
Translational Sciences



CTSA Program Goals

1. Workforce Development
2. Collaboration/Engagement
3. Integration
4. Methods/Processes
5. Informatics

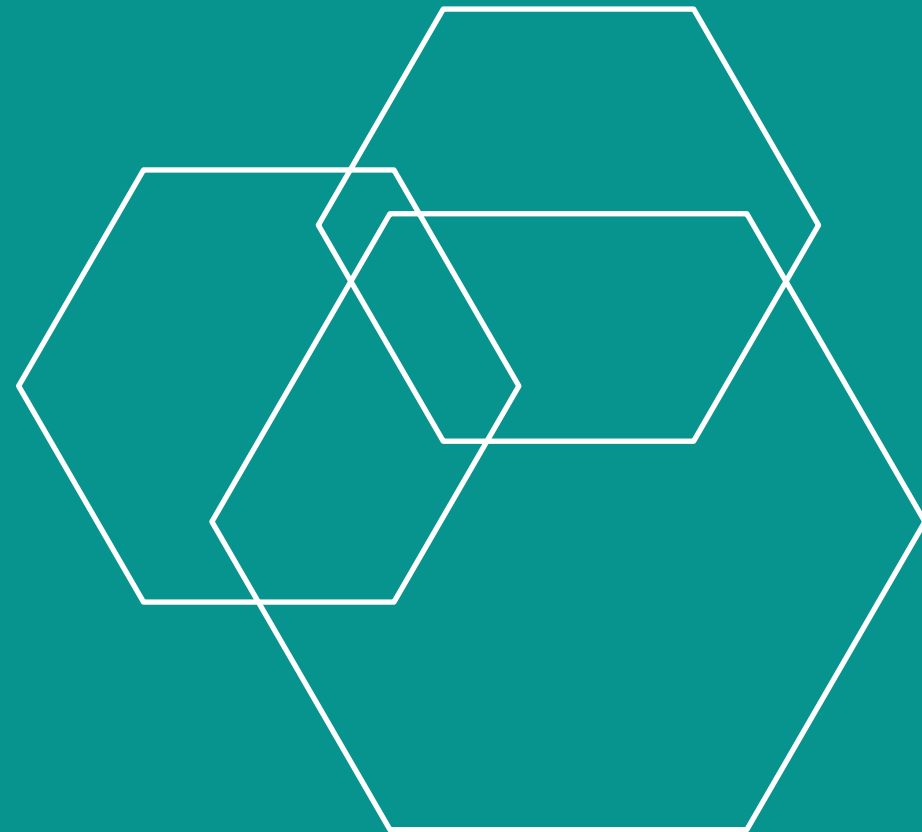


CCCTS



Research Commons

sharpening your science





Sharpen your Science

Project Panels and BERD

Through **Project Panels**, the CCTS partners with investigators to brainstorm ideas, generate research questions, fine-tune study design and sharpen proposals in advance of extramural review.



Investigators benefit from **CCTS Biostatistics, Epidemiology and Research Design (BERD)** participation in project panels and via subsequent 1:1 consultation to ensure the highest standards of methodologic rigor.





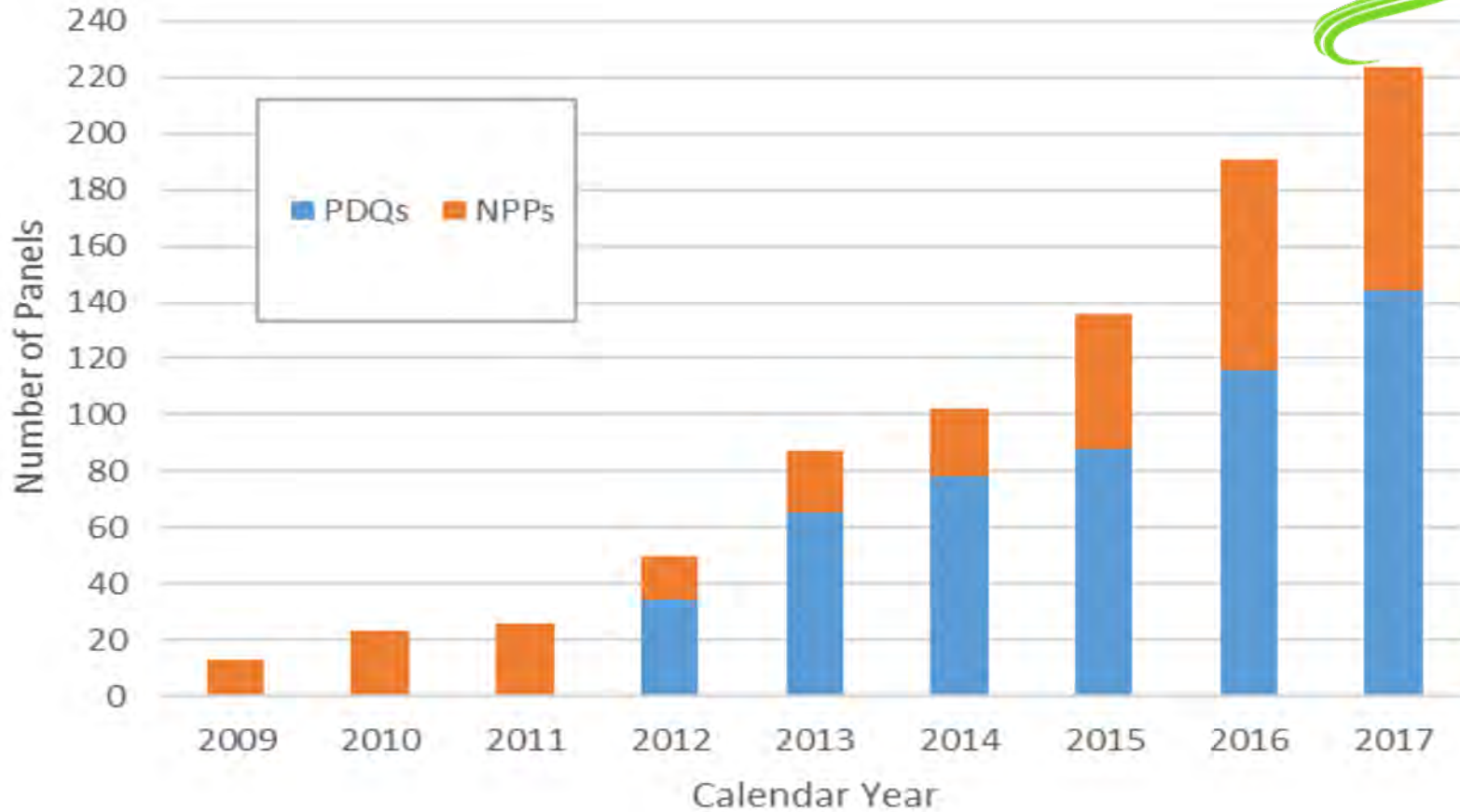
CCTS Project Panels

RESEARCH COMMONS
Center for Clinical and Translational Science

Panel participation → 4-fold ↑ in likelihood of funding



MISSION CONTROL





Informatics

BERD

Panels

Funding Opportunities

Grant Help

Budget Development

Clinical Support

Data Management

Feasibility

Grant Library

Proposal Development

[Home](#) | [Research Commons](#) | [Grant Help](#) | [Proposal Development](#) | [Grant Library](#) | [NIH Grant K Series Samples](#)

NIH Grant K Series Samples

The NIH supports Research Training and Career Development programs to help prepare individuals for careers in biomedical, behavioral, social, and clinical research. This page offers samples of several K mechanisms from mentored awards for new investigators to awards intended for mid-career, non-mentored individuals.

To learn more about the K series, visit the [NIH Research Career Development Award page](#).

For assistance with a K grant, or to submit a sample K, contact the CCTS Research Commons (ccts@uab.edu).

[K01-NHLBI-FY17-ASLIBEKYAN](#)

[K01-NIDDK-FY15-CARSON A](#)

[K01-NCI-FY15-CARSON T](#)



CLINICAL TRANSLATION

Center for Clinical and Translational Science

Clinical Research Support Program



Meredith
Fitz-Gerald

From study start up through implementation and reporting to close out, our Clinical Research Support Program (CRSP) unit offers flexible, cost-effective services to research teams across the **lifecycle of a clinical study**. Our goal is to provide a "Best Clinical Practice" environment, facilitating the highest quality clinical research and ensuring rigor and transparency. We offer expertise in NIH, industry, and investigator-initiated trials.





Multi-lingual Translational Thinkers

Perspective Making: deeply rooted in our own disciplines – **Disciplinary thinker**



Perspective Taking: appreciate interdisciplinary perspectives of others – **Multi-lingual thinker**

Looking left and right (T1-T4) & thinking outside of our box – **Translational thinker**

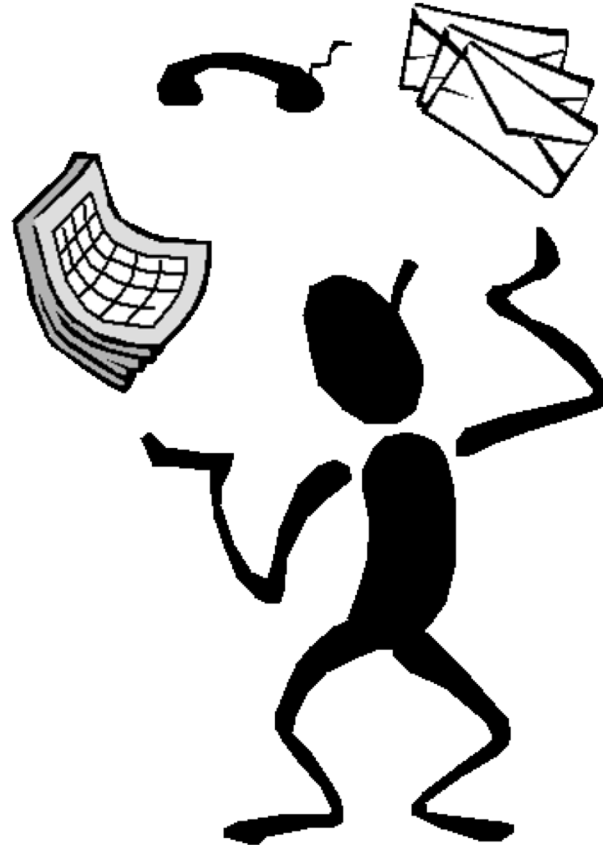




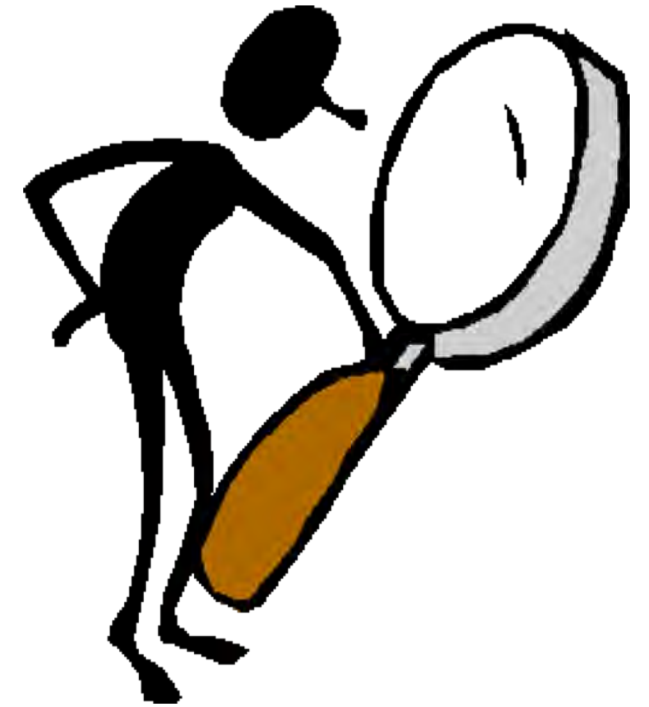
Developing Translational Thinkers



Didactic



Self-Directed



Experiential





Developing Translational Thinkers

CCTS t.school

Didactic	Self-Directed	Experiential
CTS-TP (EPI 680)	Kaizen	Workshops (e.g., Bioethics, Specific Aims)
Friday Fellows (EPI 690)	Online Training Academy Library	Mini Sabbaticals (SEQUIN)
Training Interdisciplinary & Emerging Research Scholars (TIERS)	Health Disparities Training (Video Vignettes)	Panels Programs
Clinical Investigator Training Program (CITP)		Grant Writing Intensive Cohorts (GRIT): W2K & K2R
Case Studies in Mentoring		ICorps @ NCATS
		LEAD: Learn Enhance Advance Drive





CCTS KL2

PI Kenneth Saag, MD, MSc

The CCTS Partner Network, is pleased to offer the **Mentored Career Development (KL2) Program in Clinical and Translational Science**, funded by the National Center for Advancing Translational Sciences (NCATS).

We provide 2-year KL2 awards to **junior faculty committed to conducting translational research that addresses diseases/conditions that disproportionately affect the Deep South.**

Are You Our Next CCTS KL2 Scholar?



Are you a junior faculty member with a passion for translational research? Do you want to help reduce the burden of diseases and improve health conditions that disproportionately affect populations in the Deep South? If so, consider applying to become our next [CCTS Deep South Mentored Career Development \(KL2\) scholar!](#)

Applicants must commit to a minimum of 75% effort for two years. In return you will receive expert mentorship, translational research experience, and support for salary (75%, up to \$120,000 annually), training, and travel. The CCTS research and training base includes an expansive partnership network spanning three states (AL, LA, MS).

Submit a pre-application by **Friday, December 7, 2018**. Competitive applicants will be invited to submit a full application.

For complete pre- and full application instructions and to see our current and past KL2 scholars, visit www.uab.edu/ccts/kl2. This program is open to eligible CCTS Partner institutions.

Questions about the CCTS Deep South Mentored Career Development KL2 Program? Contact Jeanne Merchant (jsmerchant@uabmc.edu) or the CCTS (ccts@uab.edu or 205-934-7442). For more information about the goals for the national program, visit the [National Center for Advancing Translational Sciences \(NCATS\) KL2 page](#).

"The CCTS KL2 program changed my career."

– Dr. Courtney Peterson, Assistant Professor, UAB Dept. of Nutrition Sciences and NIH R01 PI



www.uab.edu/ccts/training-academy | ccts@uab.edu | 205-934-7442





GRIT: Grant wRiting InTensive Cohorts

4-6 month structured grant preparation program



SCIENTIFIC COMMUNITY OF
OUTCOMES RESEARCHERS

W2K (Whatever to K): Extramural K

K2R: “K” to R-series award (R01 focus)



Sample Timeline:

March	Orientation to W2K Program
Mid-April	Nascent Project Panel (NPP)
April/May	Specific Aims Workshop
Mid-May	BERD
By June 1	Call with Program Officer
June-Sept	Weekly K Writing Group
By Aug 1	Panel Done Quickly (PDQ) 1
Mid-Aug	Scientific Editing
By Aug 30	PDQ Round 2
Sept 20	Extramural Submission to OSP





TO
INFINITY
AND
BEYOND!



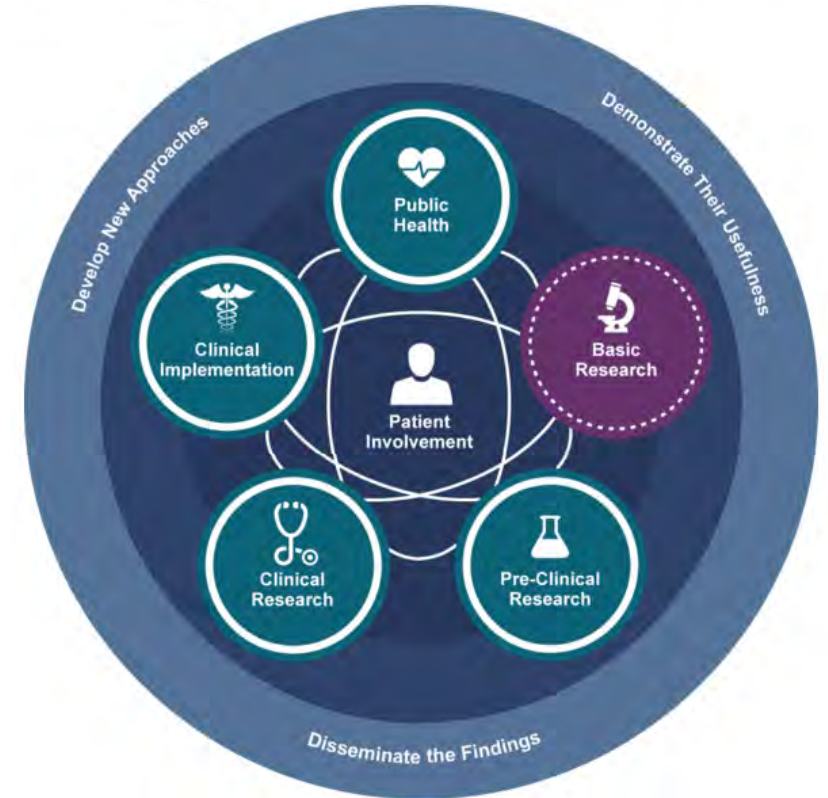


Clinical Translational Science Training Program (CTS-TP; EPI 680)

Weekly, 2-hour didactic lecture and interactive class sessions for six months (Spring semester)

Participant milestones:

- Application: Present a concept for a research project
- Course: Prepare/present an abstract describing the research concept
- Participate actively through preparation, discussion and attendance in class (80% attendance required)
- Attend one (1) meeting of the Institutional Review Board as scheduled by the Program





Training Interdisciplinary Emerging Research Scholars (TIERS)

Promoting translational research community at early stage investigator (ESI) level with professional development via interactive networking sessions

- Target audience: “K” scholars
- Monthly 1.5-hour session
 - Career development
 - Grant writing and grants management
 - Team science
 - Leadership development

How to Write Training Sections of Career Development Grants

Friday, June 14, 2019

11:00am - 12:30pm

(optional writing session until 3pm)

Pittman Center for Advanced Medical Studies (PCAMS)

1924 7th Ave South, Birmingham, AL



Lisa Jackson, MD

Inaugural Bourge Endowed Professor
Cardiovascular Disease
University of Alabama at Birmingham



Mary Townsley, PhD

Senior Associate Dean
Department of Physiology & Cell Biology
University of South Alabama





Questions?

Mike Mugavero

mmugavero@uabmc.edu

Becky Reamey

reamey@uab.edu



205.934.7442



ccts@uab.edu



www.uab.edu/ccts



PCAMS -1924 8th Ave. South



[@cctsnetwork](#)



Search: [cctsnetwork](#)



CCTS FORUM

Getting to K and Beyond



Surya Bhatt, MD
Associate Professor
UAB Division of Pulmonary



Crystal Chapman Lambert, PhD
Assistant Professor
UAB School of Nursing



Gregory A. Payne, MD, PhD
Assistant Professor
UAB Division of Cardiovascular Disease



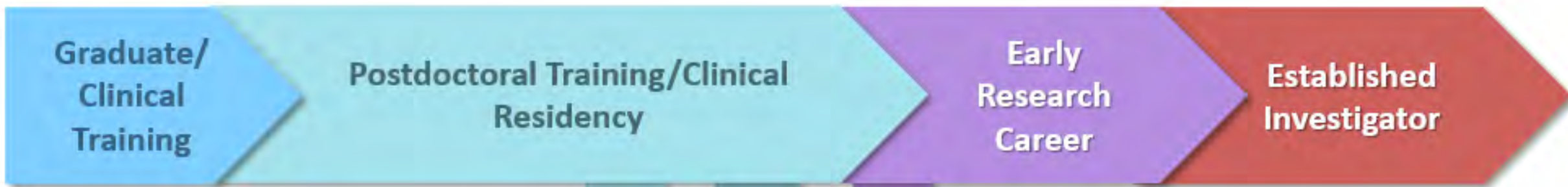
CCTS

Center for Clinical and Translational Science

Pittman Center for Advanced Medical Studies (PCAMS)
1924 7th Avenue South

hors d'oeuvres and refreshments will be served

Sharpening Your Science, Improving Human Health, Addressing Disparities in the Deep South

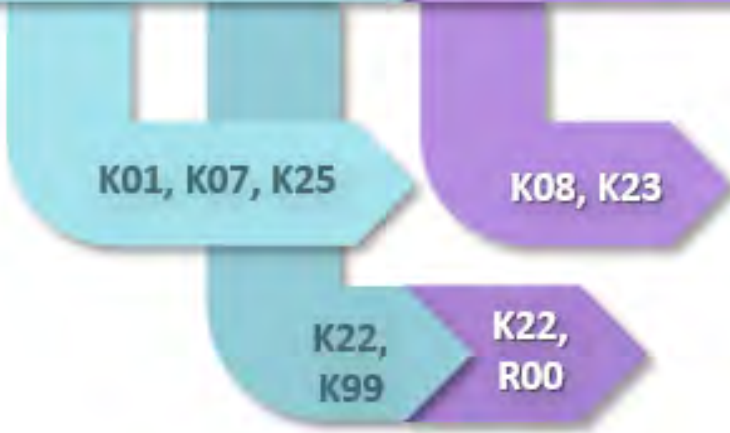


T32, F31 Pre-Doc

T32, F32 Post-Doc

R03, R21

R34, R01



Foundation Awards

Loan Repayment Programs

Diversity Supplements



Career (K) Kiosk

<https://researchtraining.nih.gov/programs/fellowships>



K01

Mentored Research Scientist Career Development Award

For support of a postdoctoral or early career research scientists committed to research, in need of both advanced research training and additional experience.

K08

Mentored Clinical Scientist Research Career Development Award

To provide the opportunity for promising clinician scientists with demonstrated aptitude to develop into independent investigators, or for faculty members to pursue research, and aid in filling the academic faculty gap in health profession's institutions.

K23

Mentored Patient-Oriented Research Career Development Award

To provide support for the career development of clinically trained professionals who have made a commitment to patient-oriented research, and who have the potential to develop into productive, clinical investigators.

K99/
R00

Pathway to Independence Award

To support both an initial mentored research experience (K99) followed by independent research (R00) for highly qualified, postdoctoral researchers, to secure an independent research position. Award recipients are expected to compete successfully for independent R01 support during the R00 phase.



National Institutes of Health
Office of Extramural Research

